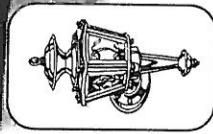
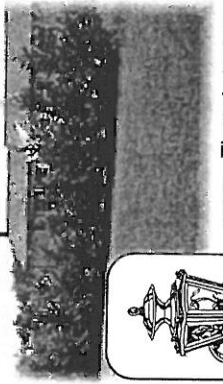


EXTERIOR

Shrubby and trees should not block the view of doorways and windows. As you can see below, this obstruction allows an intruder the opportunity of privacy to gain entrance.



There is too much of a chance that they might be spotted.

Install exterior lighting. The best possible location for outside lights is under the eaves. This makes ground-level assault more difficult. You can buy an inexpensive timer or photoelectric cell which will automatically turn the lights on at dusk and turn them off at dawn.

To give the appearance that you are at home, use an electric timer to turn lamps on in the evening and off at your normal retirement hour. Timers can be used to turn on radios as well as lamps. Use at least one timer on each floor of the house.

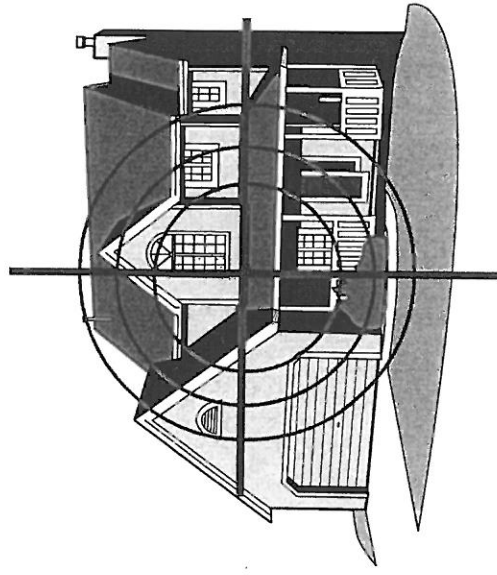
Ladders and other stepping devices should be chained up in a horizontal position or locked in a garage. Such items left unsecured can be used to gain entrance through second story windows.

You should clearly display your house number. Law enforcement officers and emergency vehicles can recognize your home resulting in an early response in case of an emergency.

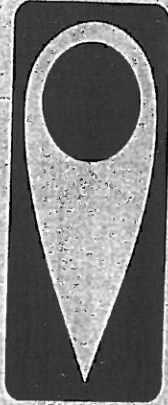
This Residential Security pamphlet is designed to be a brief and explanatory process for securing your home. By following its guidelines, your home will be more secure, resulting in your own sense of security.

Burglars look for easy targets, so . . .
MAKE IT TOUGH!

RESIDENTIAL SECURITY



**WARNING
PROTECTED BY
NEIGHBORHOOD
WATCH**



**HAMILTON TWP.
POLICE
581-4000**

**DON'T MAKE YOUR
HOUSE A TARGET
FOR BURGLARS !!**

Sponsored by:
Hamilton Police Division
Office of Community Policing
1270 White Horse Avenue
Hamilton, New Jersey 08619

Mayor

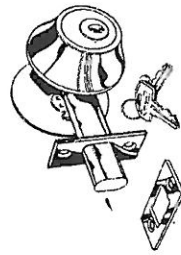
Chief James W. Collins

visit us online:

<http://hamiltonnj.com/>



As we approach your
FRONT DOOR . . .
Install good locks . . . and lock them!



This deadbolt lock has a one inch extended bolt, and a case-hardened security cover installed over the lock cylinder. The security cover recesses the cylinder and covers the lock, making it more difficult to force or damage the locking mechanism.

PATIO DOORS

Sliding patio doors are frequent points of entry. They should be stabilized by a folding bar inside the door, or with a stick wedged firmly in the lower track behind the door. This will reinforce the door's standard lock.

Another type of entry from sliding patio doors is removal from their track. Many can be lifted from their tracks in a matter of seconds. The ease of this can be minimized by the installation of screws above the door in the frame. This cuts down the amount of open space.

Doors leading to the outside of the house should be solid, not hollow. If these doors contain windows, they should be of unbreakable material and out of reach of any locks. All door pins should be on the inside of the structure.

Basement and garage doors are as important as front and back doors for security. They should be of solid structure and remain locked when not in use.

Garage doors can be secured by placing a lock in the track. Unplug your automatic garage door opener when leaving for an extended period of time or while on vacation.

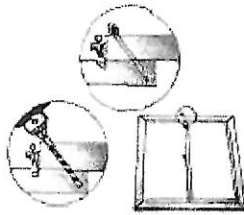
Answering your door without knowing who is outside can result in personal contact with a criminal. Make it a practice to view callers through a window or glass door panel. Install a 180 degree door viewer in the door.

WINDOWS

How about windows? Not only do we lose heat or cool through windows, they also offer an easy target for the criminal.

Windows are another easily accessible entrance.

- A. Double hung windows should be pinned.
1. Drill a 9/64" hole through each corner of the lower window at a slight downward angle.
 2. Extend the hole into the lower corners of the upper window about half way.
 3. A 16 penny nail or eyebolt will fit freely into the holes. The nail can be shortened to desired length.



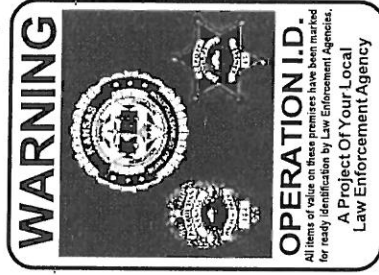
B. Aluminum frame sliding windows should be secured to reduce vertical clearance between window and track.

1. Slide window to open position.
2. Install two one inch #12 sheet metal screws in track above window at each end.
3. Adjust screws to allow for minimum clearance between screws and window.
4. These windows can also be secured in the same fashion as the sliding patio doors.

Securing your home against intrusion is of paramount importance. When the security of your home is improved, the sense of well-being and safety provides a pleasant surrounding for your entire family.

There are two programs offered along with the *Residential Security Program* called *Operation Identification* and *Neighborhood Watch*.

Operation Identification has become one of the biggest deterrents to the criminal in reduction of property crimes. Your property can be protected by identifying each piece with your Driver's license number or the NCIC (National Crime Information Center) number assigned to you by your local law enforcement agency. Please contact them when determining your numbering procedure.



The *Neighborhood Watch Program* is designed to protect your entire neighborhood. This program enlists the cooperation of all your surrounding neighbors to become educated about crime prevention and familiar with each other. If everyone works together to become aware of potential danger signs and responds to them, your neighborhood can develop an advantageous system for everyone.