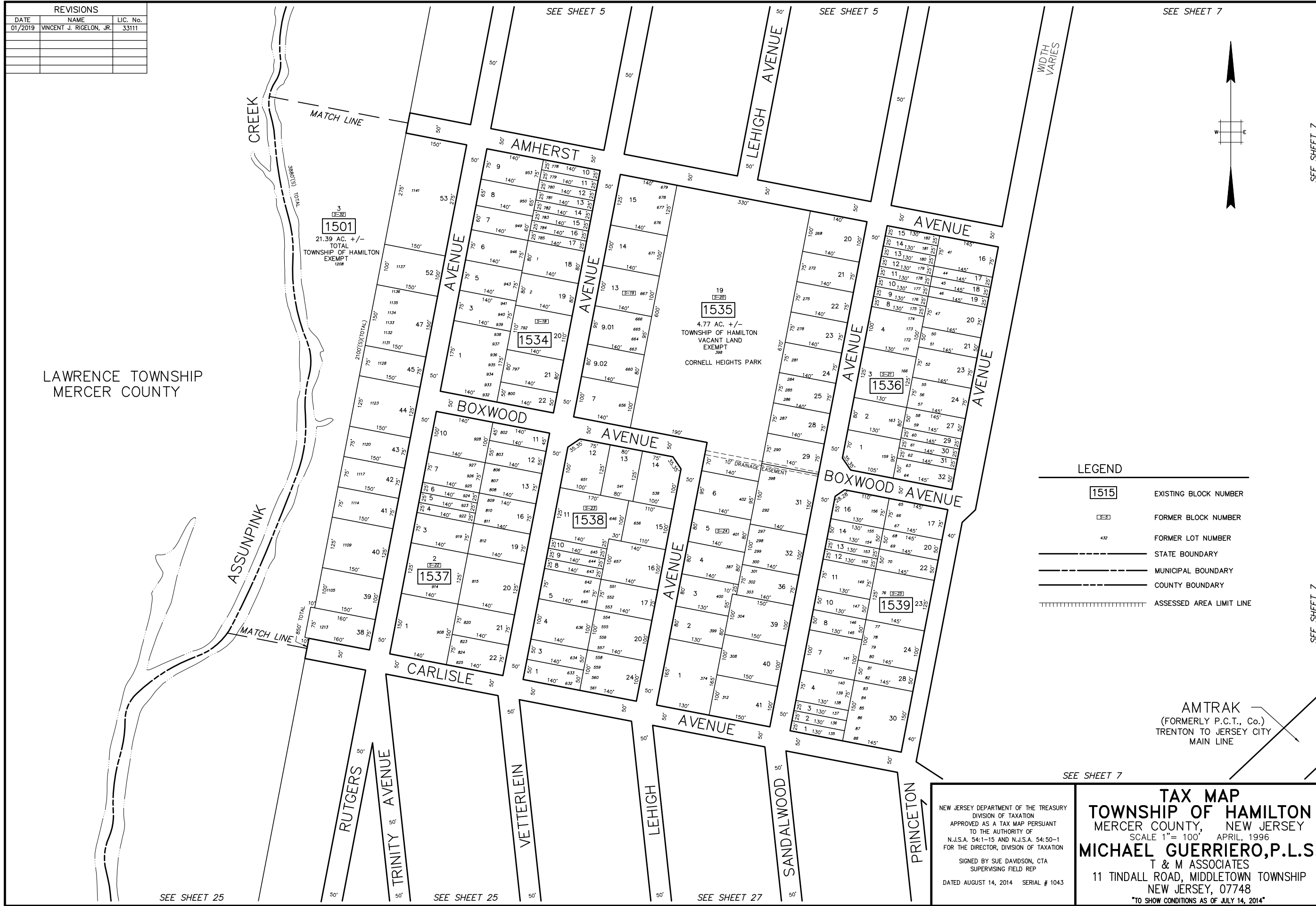
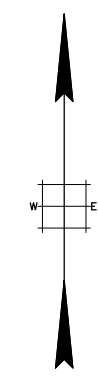


REVISIONS		
DATE	NAME	LIC. No.
01/2019	VINCENT J. RIGELON, JR.	33111



SEE SHEET 7



SEE SHEET 7

LAWRENCE TOWNSHIP  
MERCER COUNTY

**LEGEND**

- 1515 EXISTING BLOCK NUMBER
- [S-20] FORMER BLOCK NUMBER
- 432 FORMER LOT NUMBER
- STATE BOUNDARY
- MUNICIPAL BOUNDARY
- COUNTY BOUNDARY
- ASSESSED AREA LIMIT LINE

AMTRAK  
(FORMERLY P.C.T., Co.)  
TRENTON TO JERSEY CITY  
MAIN LINE

SEE SHEET 7

**TAX MAP**  
**TOWNSHIP OF HAMILTON**  
MERCER COUNTY, NEW JERSEY  
SCALE 1" = 100' APRIL, 1996  
**MICHAEL GUERRIERO, P.L.S.**  
T & M ASSOCIATES  
11 TINDALL ROAD, MIDDLETOWN TOWNSHIP  
NEW JERSEY, 07748  
"TO SHOW CONDITIONS AS OF JULY 14, 2014"

NEW JERSEY DEPARTMENT OF THE TREASURY  
DIVISION OF TAXATION  
APPROVED AS A TAX MAP PURSUANT  
TO THE AUTHORITY OF  
N.J.S.A. 54:1-15 AND N.J.S.A. 54:50-1  
FOR THE DIRECTOR, DIVISION OF TAXATION  
SIGNED BY SUE DAVIDSON, CTA  
SUPERVISING FIELD REP  
DATED AUGUST 14, 2014 SERIAL # 1043

SEE SHEET 25

SEE SHEET 25

SEE SHEET 27

SEE SHEET 7