

REVISIONS		
DATE	NAME	LIC. No.
11/2021	VINCENT J. RIGELON, JR.	33111

SEE SHEET 2

SEE SHEET 2

LEGEND

- 1515 EXISTING BLOCK NUMBER
- 1520 FORMER BLOCK NUMBER
- 432 FORMER LOT NUMBER
- STATE BOUNDARY
- - - MUNICIPAL BOUNDARY
- - - COUNTY BOUNDARY
- ▤ ASSESSED AREA LIMIT LINE

SEE SHEET 2

SEE SHEET 2

SEE SHEET 12

SEE SHEET 2

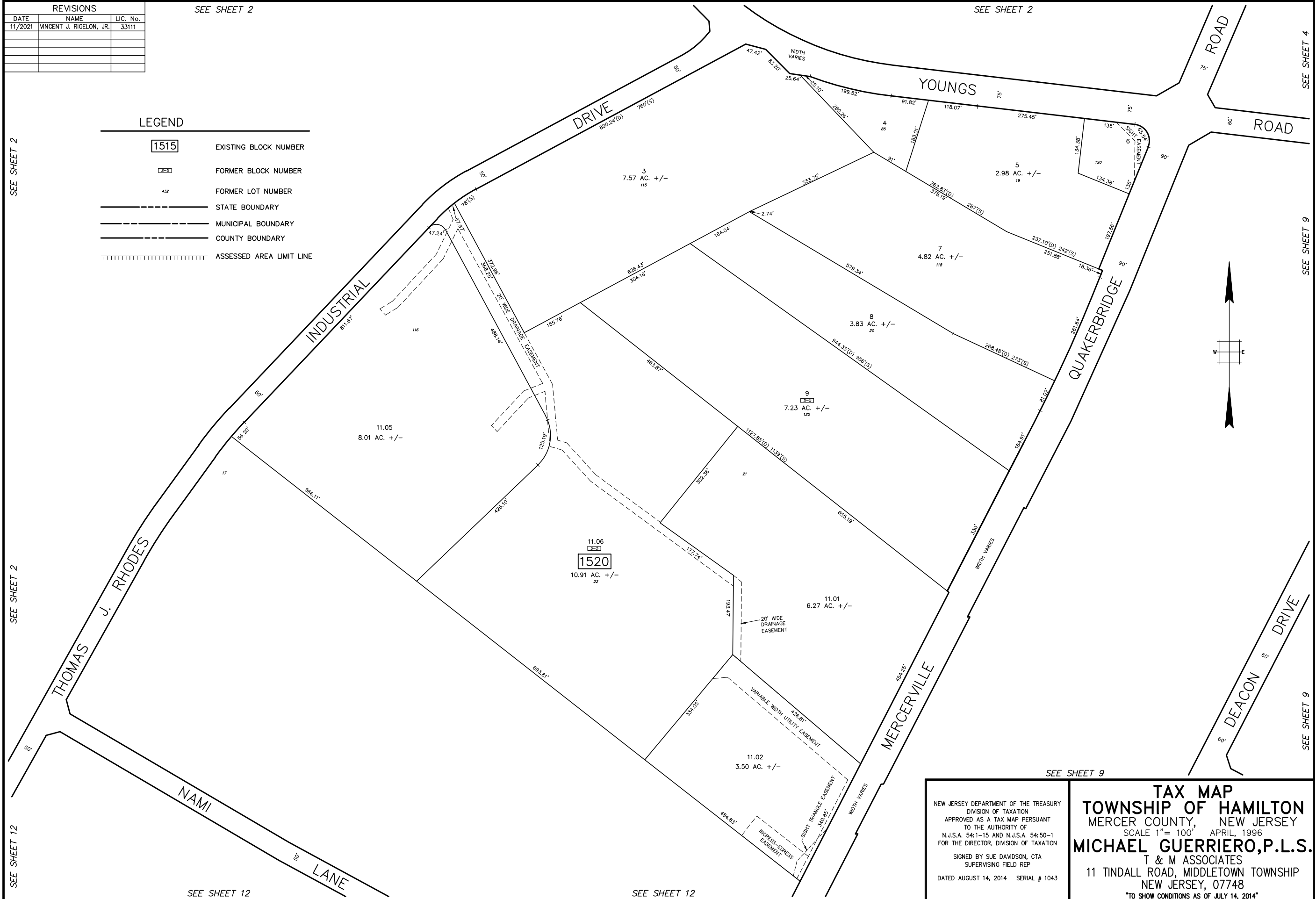
SEE SHEET 12

SEE SHEET 9

SEE SHEET 9

SEE SHEET 4

SEE SHEET 9



NEW JERSEY DEPARTMENT OF THE TREASURY
 DIVISION OF TAXATION
 APPROVED AS A TAX MAP PURSUANT
 TO THE AUTHORITY OF
 N.J.S.A. 54:1-15 AND N.J.S.A. 54:50-1
 FOR THE DIRECTOR, DIVISION OF TAXATION

SIGNED BY SUE DAVDSON, CTA
 SUPERVISING FIELD REP

DATED AUGUST 14, 2014 SERIAL # 1043

TAX MAP
TOWNSHIP OF HAMILTON
 MERCER COUNTY, NEW JERSEY
 SCALE 1" = 100' APRIL, 1996
MICHAEL GUERRIERO, P.L.S.
 T & M ASSOCIATES
 11 TINDALL ROAD, MIDDLETOWN TOWNSHIP
 NEW JERSEY, 07748
 TO SHOW CONDITIONS AS OF JULY 14, 2014