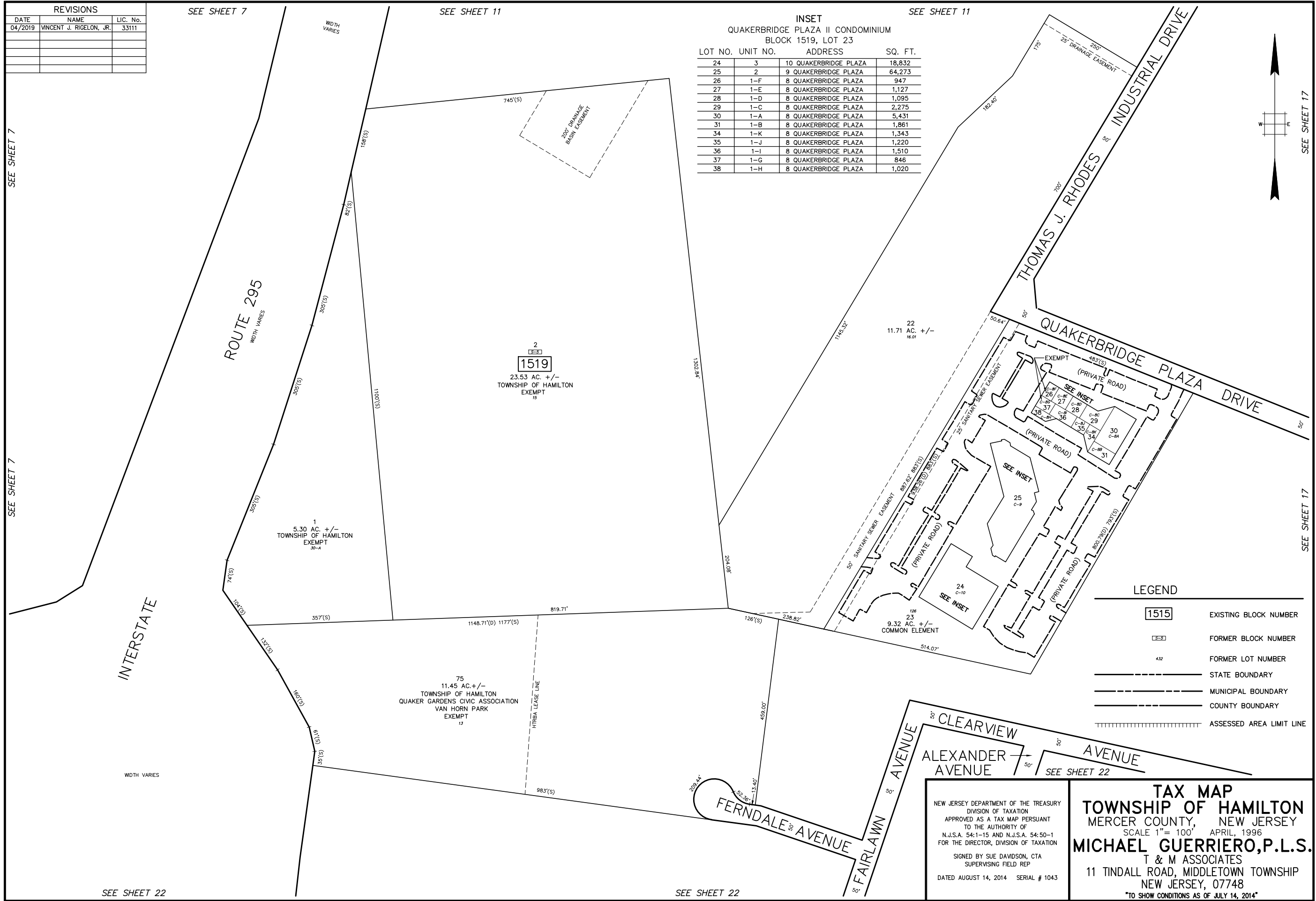
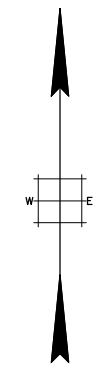


| REVISIONS | | |
|-----------|-------------------------|----------|
| DATE | NAME | LIC. No. |
| 04/2019 | VINCENT J. RIGELON, JR. | 33111 |
| | | |
| | | |
| | | |



INSET
QUAKERBRIDGE PLAZA II CONDOMINIUM
BLOCK 1519, LOT 23

| LOT NO. | UNIT NO. | ADDRESS | SQ. FT. |
|---------|----------|-----------------------|---------|
| 24 | 3 | 10 QUAKERBRIDGE PLAZA | 18,832 |
| 25 | 2 | 9 QUAKERBRIDGE PLAZA | 64,273 |
| 26 | 1-F | 8 QUAKERBRIDGE PLAZA | 947 |
| 27 | 1-E | 8 QUAKERBRIDGE PLAZA | 1,127 |
| 28 | 1-D | 8 QUAKERBRIDGE PLAZA | 1,095 |
| 29 | 1-C | 8 QUAKERBRIDGE PLAZA | 2,275 |
| 30 | 1-A | 8 QUAKERBRIDGE PLAZA | 5,431 |
| 31 | 1-B | 8 QUAKERBRIDGE PLAZA | 1,861 |
| 34 | 1-K | 8 QUAKERBRIDGE PLAZA | 1,343 |
| 35 | 1-J | 8 QUAKERBRIDGE PLAZA | 1,220 |
| 36 | 1-I | 8 QUAKERBRIDGE PLAZA | 1,510 |
| 37 | 1-G | 8 QUAKERBRIDGE PLAZA | 846 |
| 38 | 1-H | 8 QUAKERBRIDGE PLAZA | 1,020 |



LEGEND

| | |
|--|--------------------------|
| 1515 | EXISTING BLOCK NUMBER |
| 3-3 | FORMER BLOCK NUMBER |
| 432 | FORMER LOT NUMBER |
| --- | STATE BOUNDARY |
| --- | MUNICIPAL BOUNDARY |
| --- | COUNTY BOUNDARY |
| | ASSESSED AREA LIMIT LINE |

NEW JERSEY DEPARTMENT OF THE TREASURY
DIVISION OF TAXATION
APPROVED AS A TAX MAP PURSUANT
TO THE AUTHORITY OF
N.J.S.A. 54:1-15 AND N.J.S.A. 54:50-1
FOR THE DIRECTOR, DIVISION OF TAXATION
SIGNED BY SUE DAVIDSON, CTA
SUPERVISING FIELD REP
DATED AUGUST 14, 2014 SERIAL # 1043

TAX MAP
TOWNSHIP OF HAMILTON
MERCER COUNTY, NEW JERSEY
SCALE 1" = 100' APRIL, 1996
MICHAEL GUERRIERO, P.L.S.
T & M ASSOCIATES
11 TINDALL ROAD, MIDDLETOWN TOWNSHIP
NEW JERSEY, 07748
TO SHOW CONDITIONS AS OF JULY 14, 2014

SEE SHEET 7

SEE SHEET 7

SEE SHEET 22

SEE SHEET 22

SEE SHEET 17

SEE SHEET 17