

REVISIONS		
DATE	NAME	LIC. No.
02/2019	VINCENT J. RIGELON, JR.	33111

SEE SHEET 17

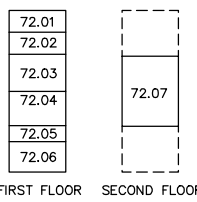
SEE SHEET 12

SEE SHEET 12

SEE SHEET 13

LONGFORD CORPORATE CENTER CONDOMINIUMS BLOCK 1521, LOT 72
3379 QUAKERBRIDGE ROAD

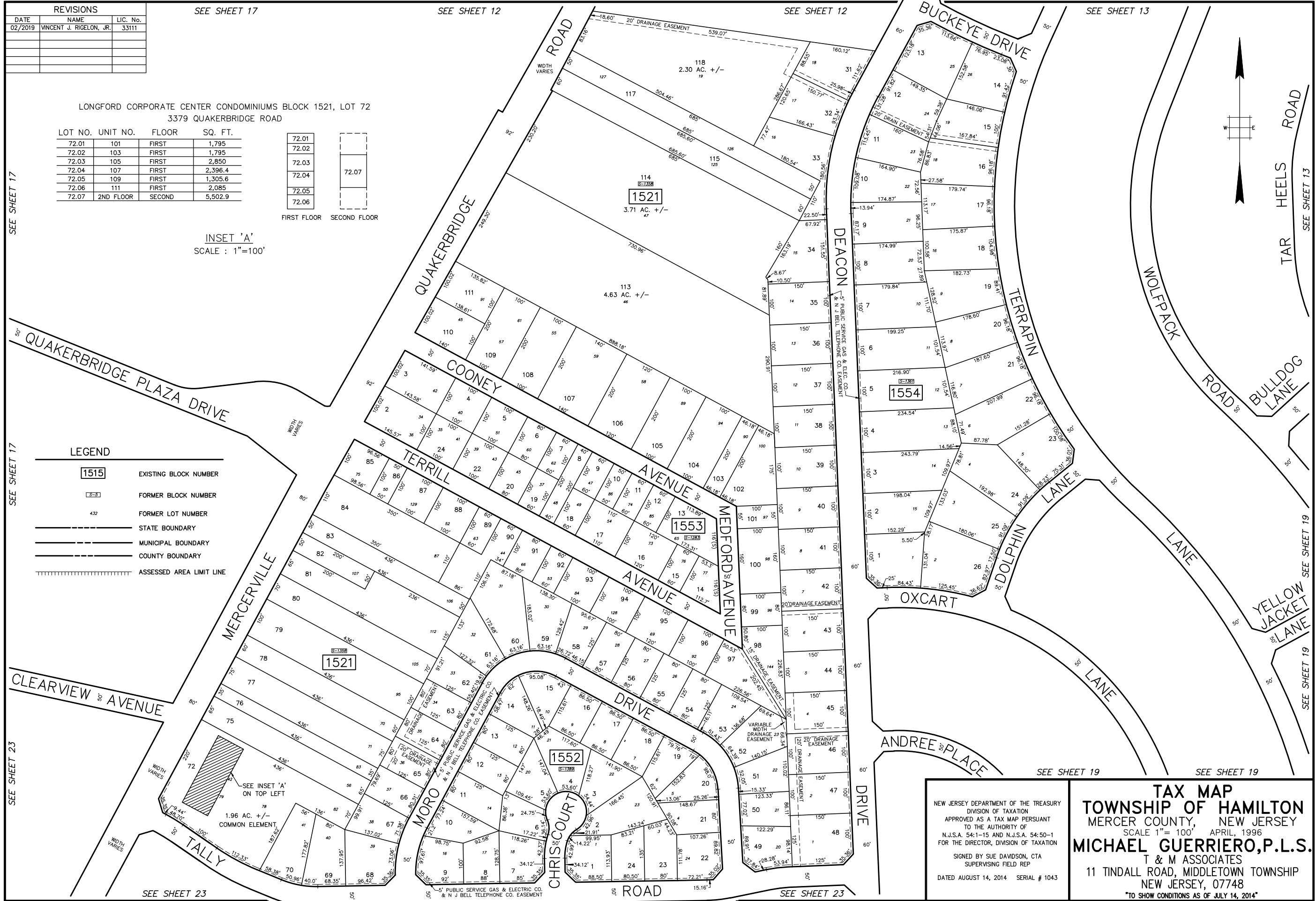
LOT NO.	UNIT NO.	FLOOR	SQ. FT.
72.01	101	FIRST	1,795
72.02	103	FIRST	1,795
72.03	105	FIRST	2,850
72.04	107	FIRST	2,396.4
72.05	109	FIRST	1,305.6
72.06	111	FIRST	2,085
72.07	2ND FLOOR	SECOND	5,502.9



INSET 'A'
SCALE : 1"=100'

LEGEND

- 1515 EXISTING BLOCK NUMBER
- 5-5 FORMER BLOCK NUMBER
- 432 FORMER LOT NUMBER
- STATE BOUNDARY
- MUNICIPAL BOUNDARY
- COUNTY BOUNDARY
- ||||| ASSESSED AREA LIMIT LINE



NEW JERSEY DEPARTMENT OF THE TREASURY
DIVISION OF TAXATION
APPROVED AS A TAX MAP PURSUANT
TO THE AUTHORITY OF
N.J.S.A. 54:1-15 AND N.J.S.A. 54:50-1
FOR THE DIRECTOR, DIVISION OF TAXATION
SIGNED BY SUE DAVIDSON, CTA
SUPERVISING FIELD REP
DATED AUGUST 14, 2014 SERIAL # 1043

TAX MAP
TOWNSHIP OF HAMILTON
MERCER COUNTY, NEW JERSEY
SCALE 1"= 100' APRIL, 1996
MICHAEL GUERRIERO, P.L.S.
T & M ASSOCIATES
11 TINDALL ROAD, MIDDLETOWN TOWNSHIP
NEW JERSEY, 07748
TO SHOW CONDITIONS AS OF JULY 14, 2014

SEE SHEET 17

SEE SHEET 17

SEE SHEET 23

SEE SHEET 23

SEE SHEET 23

SEE SHEET 23

SEE SHEET 19

SEE SHEET 19

SEE SHEET 19

SEE SHEET 19

SEE SHEET 19

SEE SHEET 19