

REVISIONS		
DATE	NAME	LIC. No.

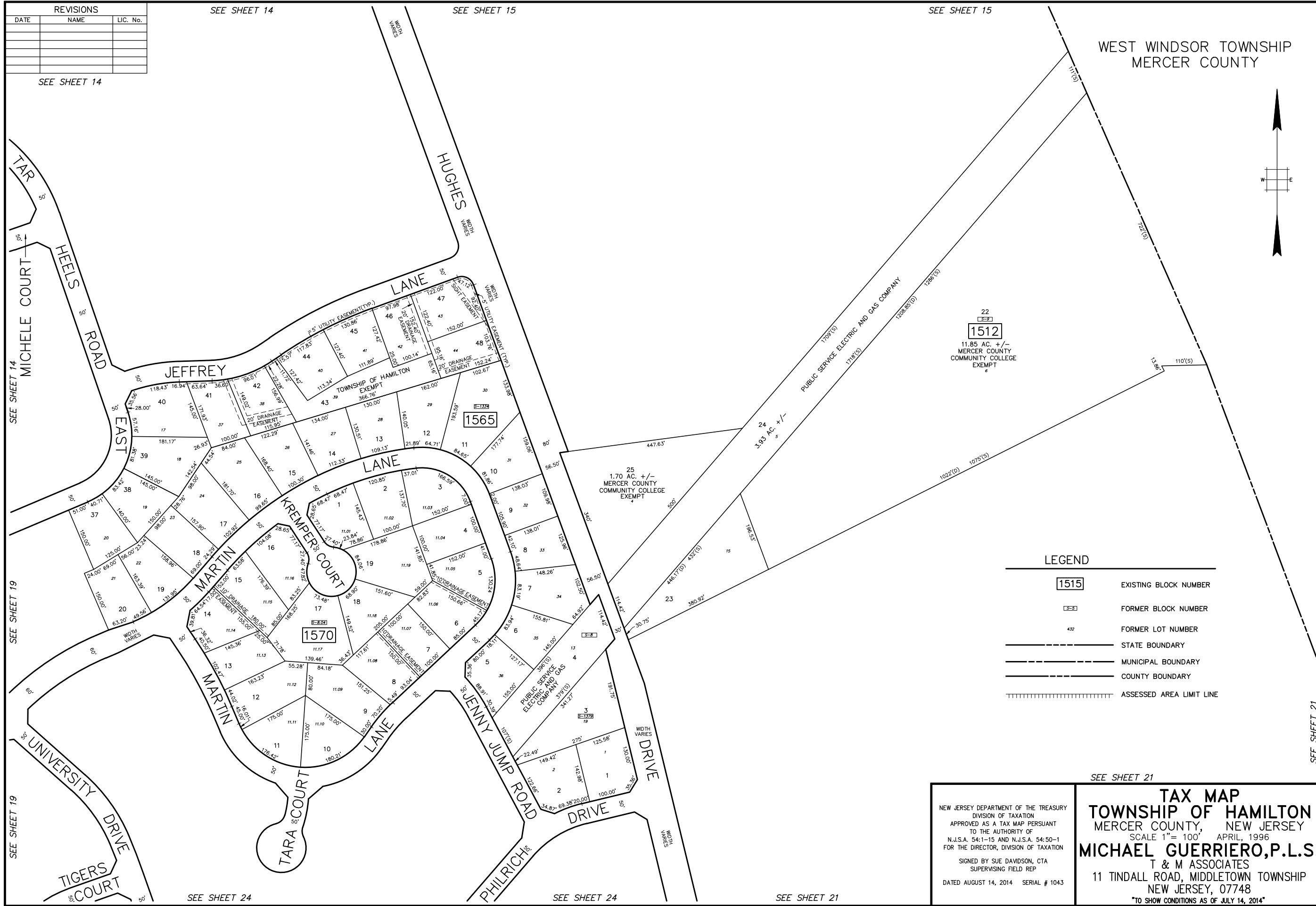
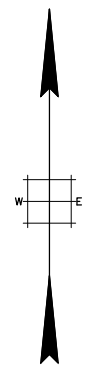
SEE SHEET 14

SEE SHEET 14

SEE SHEET 15

SEE SHEET 15

WEST WINDSOR TOWNSHIP
MERCER COUNTY



22
 46
1512
 11.85 AC. +/-
 MERCER COUNTY
 COMMUNITY COLLEGE
 EXEMPT
 6

1565

1570

LEGEND

- 1515 EXISTING BLOCK NUMBER
- 3-3 FORMER BLOCK NUMBER
- 432 FORMER LOT NUMBER
- STATE BOUNDARY
- - - MUNICIPAL BOUNDARY
- COUNTY BOUNDARY
- ||||| ASSESSED AREA LIMIT LINE

SEE SHEET 19

SEE SHEET 19

SEE SHEET 24

SEE SHEET 24

SEE SHEET 21

SEE SHEET 21

NEW JERSEY DEPARTMENT OF THE TREASURY
 DIVISION OF TAXATION
 APPROVED AS A TAX MAP PURSUANT
 TO THE AUTHORITY OF
 N.J.S.A. 54-1-15 AND N.J.S.A. 54-50-1
 FOR THE DIRECTOR, DIVISION OF TAXATION
 SIGNED BY SUE DAVIDSON, CTA
 SUPERVISING FIELD REP
 DATED AUGUST 14, 2014 SERIAL # 1043

SEE SHEET 21
TAX MAP
TOWNSHIP OF HAMILTON
 MERCER COUNTY, NEW JERSEY
 SCALE 1" = 100' APRIL, 1996
MICHAEL GUERRIERO, P.L.S.
 T & M ASSOCIATES
 11 TINDALL ROAD, MIDDLETOWN TOWNSHIP
 NEW JERSEY, 07748
 TO SHOW CONDITIONS AS OF JULY 14, 2014