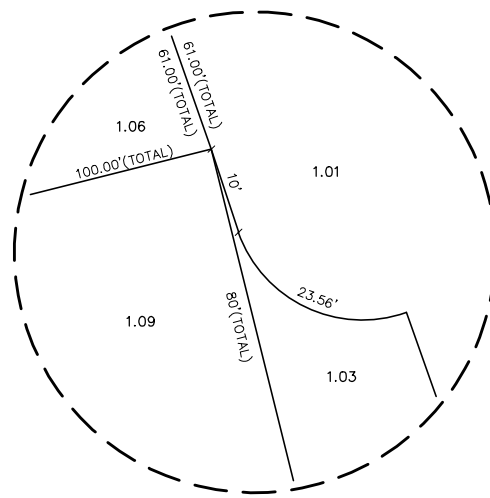
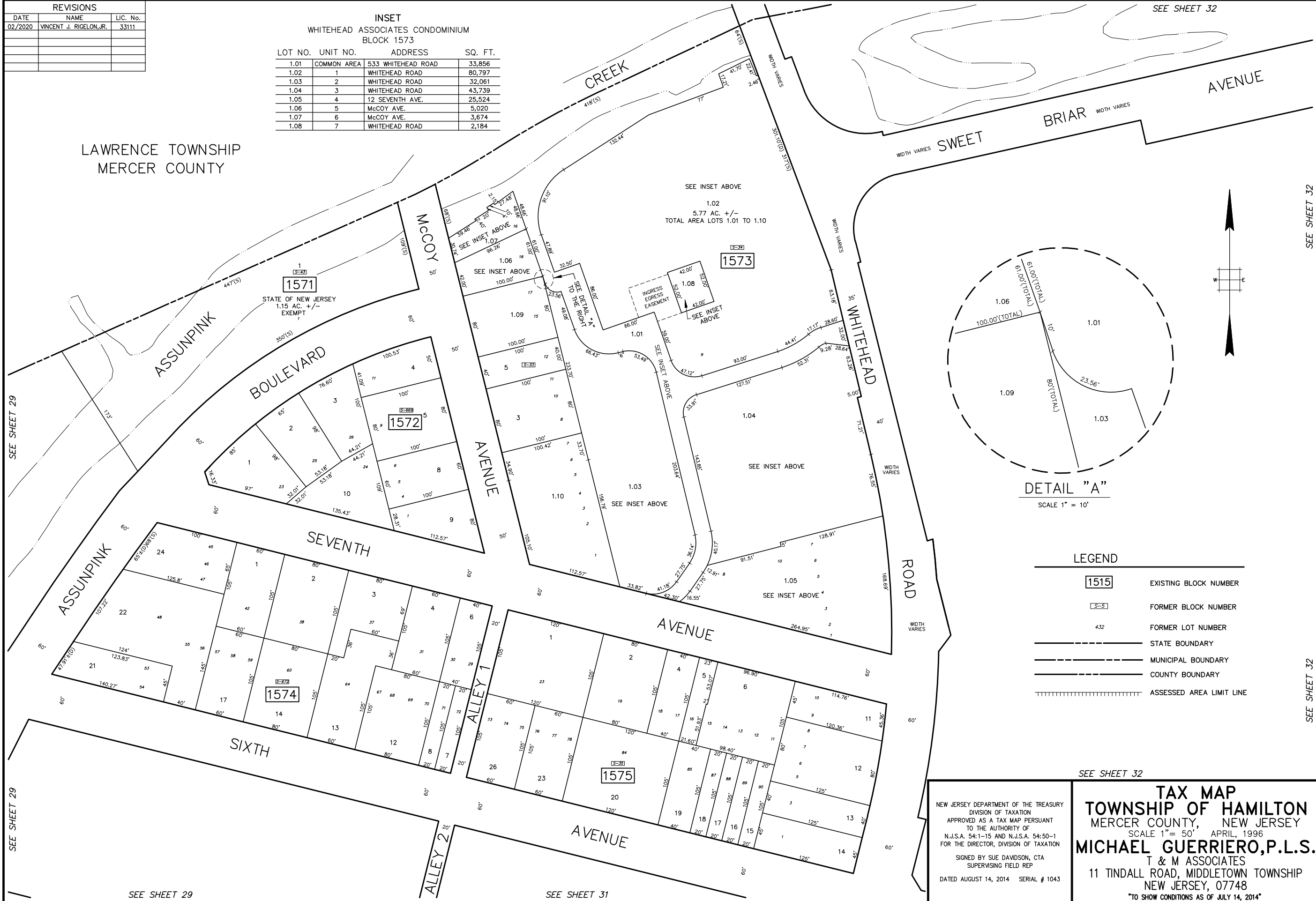


REVISIONS		
DATE	NAME	LIC. No.
02/2020	VINCENT J. RIGELON, JR.	33111

INSET
WHITEHEAD ASSOCIATES CONDOMINIUM
BLOCK 1573

LOT NO.	UNIT NO.	ADDRESS	SQ. FT.
1.01	COMMON AREA	533 WHITEHEAD ROAD	33,856
1.02	1	WHITEHEAD ROAD	80,797
1.03	2	WHITEHEAD ROAD	32,061
1.04	3	WHITEHEAD ROAD	43,739
1.05	4	12 SEVENTH AVE.	25,524
1.06	5	McCOY AVE.	5,020
1.07	6	McCOY AVE.	3,674
1.08	7	WHITEHEAD ROAD	2,184



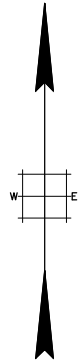
DETAIL "A"
SCALE 1" = 10'

- LEGEND**
- 1515 EXISTING BLOCK NUMBER
 - S-5 FORMER BLOCK NUMBER
 - 432 FORMER LOT NUMBER
 - STATE BOUNDARY
 - MUNICIPAL BOUNDARY
 - COUNTY BOUNDARY
 - ||||| ASSESSED AREA LIMIT LINE

NEW JERSEY DEPARTMENT OF THE TREASURY
DIVISION OF TAXATION
APPROVED AS A TAX MAP PURSUANT
TO THE AUTHORITY OF
N.J.S.A. 54:1-15 AND N.J.S.A. 54:50-1
FOR THE DIRECTOR, DIVISION OF TAXATION
SIGNED BY SUE DAVDSON, CTA
SUPERVISING FIELD REP
DATED AUGUST 14, 2014 SERIAL # 1043

TAX MAP
TOWNSHIP OF HAMILTON
MERCER COUNTY, NEW JERSEY
SCALE 1" = 50' APRIL, 1996
MICHAEL GUERRIERO, P.L.S.
T & M ASSOCIATES
11 TINDALL ROAD, MIDDLETOWN TOWNSHIP
NEW JERSEY, 07748
"TO SHOW CONDITIONS AS OF JULY 14, 2014"

LAWRENCE TOWNSHIP
MERCER COUNTY



SEE SHEET 29

SEE SHEET 29

SEE SHEET 29

SEE SHEET 31

SEE SHEET 32

SEE SHEET 32

SEE SHEET 32

SEE SHEET 32