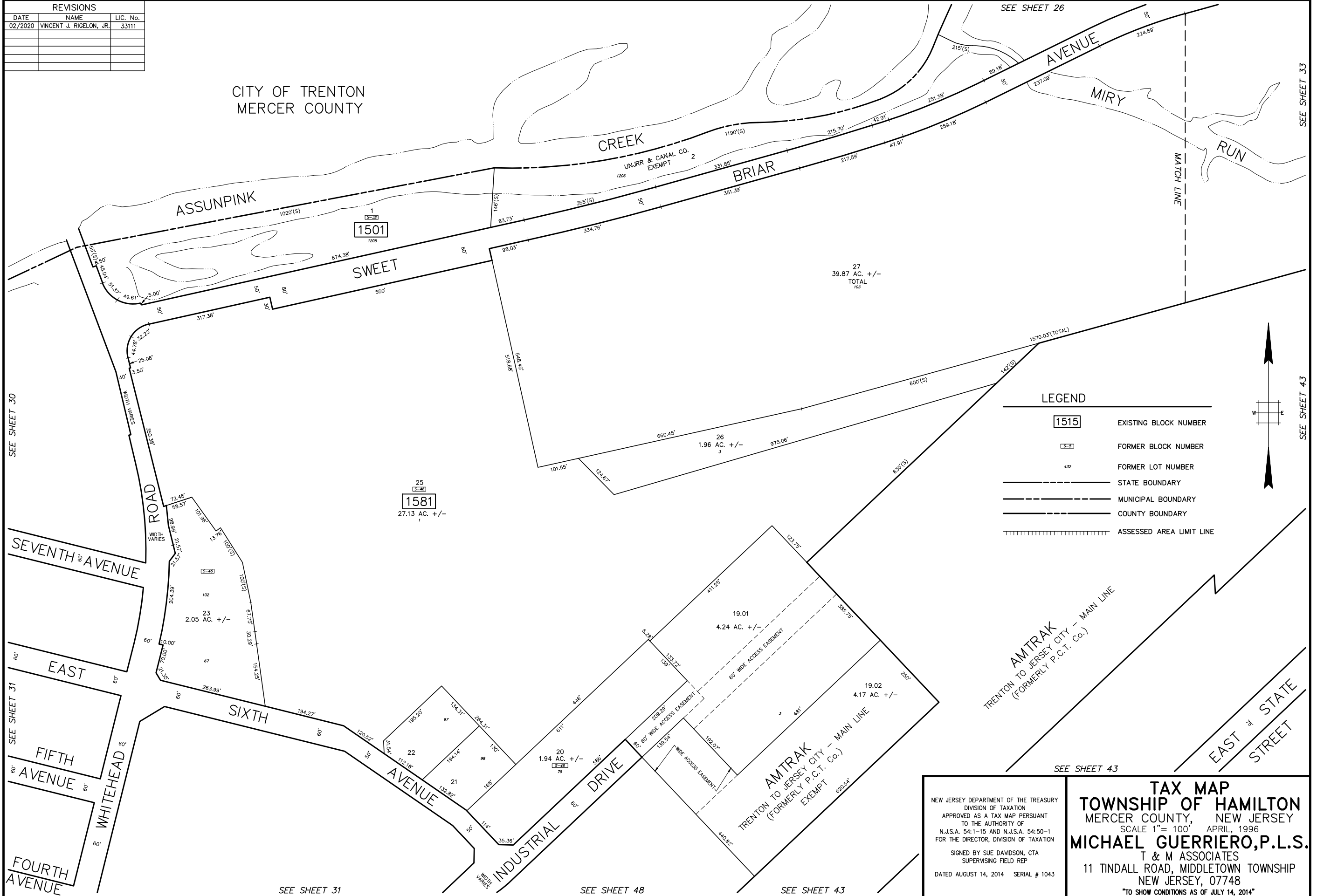


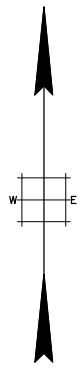
BASE INFO - DCA Relation: 0'00"=100' Base Point: 00 PLOTTED: 03/26/96

REVISIONS		
DATE	NAME	LIC. No.
02/2020	VINCENT J. RIGELON, JR.	33111



**LEGEND**

<span style="border: 1px solid black; padding: 2px;">1515</span>	EXISTING BLOCK NUMBER
<span style="border: 1px dashed black; padding: 2px;">3-3</span>	FORMER BLOCK NUMBER
432	FORMER LOT NUMBER
---	STATE BOUNDARY
- - - -	MUNICIPAL BOUNDARY
----	COUNTY BOUNDARY
	ASSESSED AREA LIMIT LINE



NEW JERSEY DEPARTMENT OF THE TREASURY  
 DIVISION OF TAXATION  
 APPROVED AS A TAX MAP PURSUANT  
 TO THE AUTHORITY OF  
 N.J.S.A. 54:1-15 AND N.J.S.A. 54:50-1  
 FOR THE DIRECTOR, DIVISION OF TAXATION  
 SIGNED BY SUE DAVIDSON, CTA  
 SUPERVISING FIELD REP  
 DATED AUGUST 14, 2014 SERIAL # 1043

**TAX MAP**  
**TOWNSHIP OF HAMILTON**  
 MERCER COUNTY, NEW JERSEY  
 SCALE 1" = 100' APRIL, 1996  
**MICHAEL GUERRIERO, P.L.S.**  
 T & M ASSOCIATES  
 11 TINDALL ROAD, MIDDLETOWN TOWNSHIP  
 NEW JERSEY, 07748  
 \*TO SHOW CONDITIONS AS OF JULY 14, 2014\*

SEE SHEET 30

SEE SHEET 31

SEE SHEET 31

SEE SHEET 48

SEE SHEET 43

SEE SHEET 43

SEE SHEET 33

SEE SHEET 43