

REVISIONS		
DATE	NAME	LIC. No.
03/2021	VINCENT J. RIGELON, JR.	33111

SEE SHEET 34

SEE SHEET 34

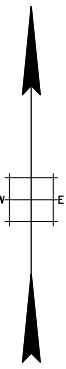
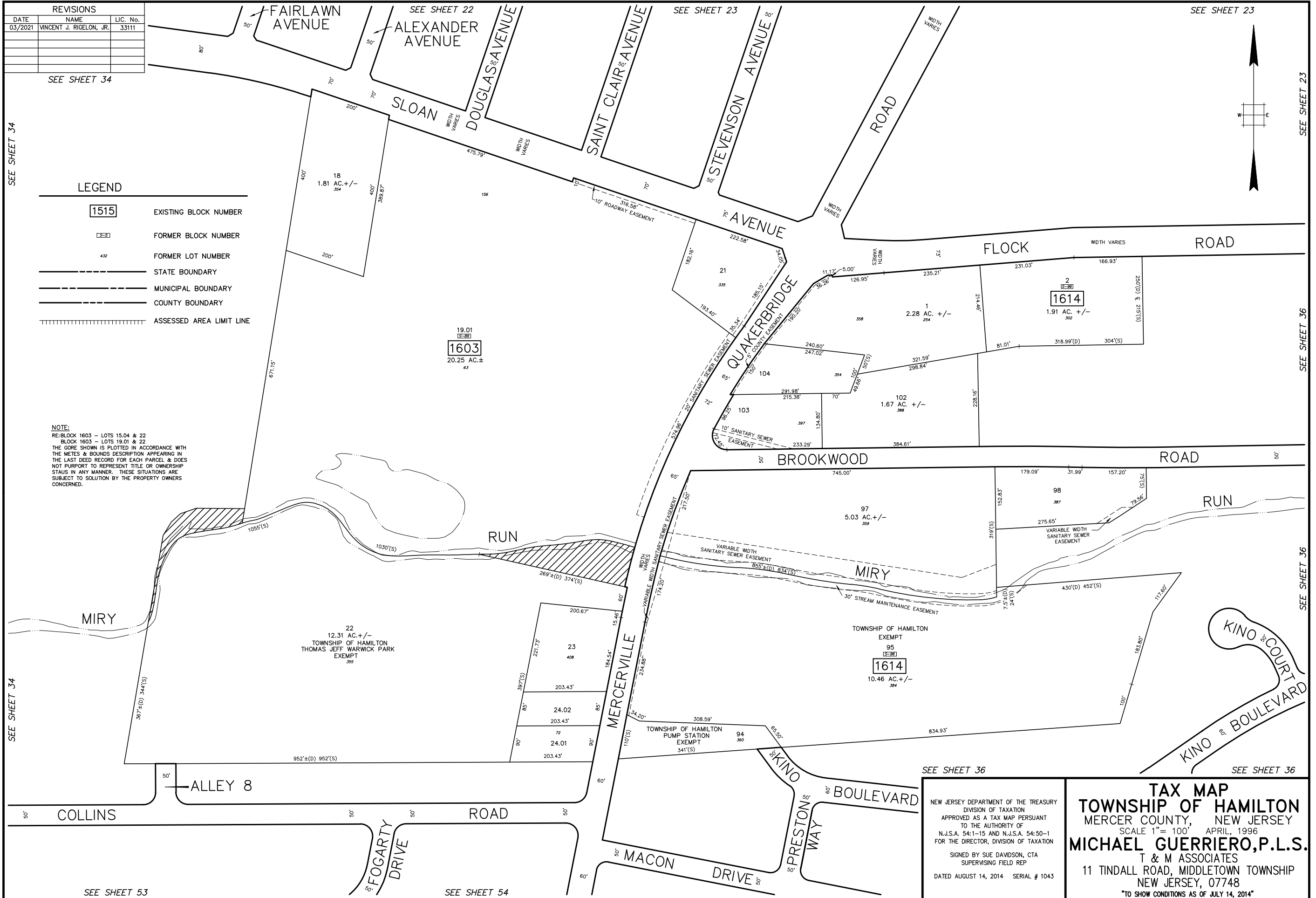
SEE SHEET 34

LEGEND

- 1515 EXISTING BLOCK NUMBER
- 3-3 FORMER BLOCK NUMBER
- 432 FORMER LOT NUMBER
- STATE BOUNDARY
- MUNICIPAL BOUNDARY
- COUNTY BOUNDARY
- ▨ ASSESSED AREA LIMIT LINE

NOTE:

RE: BLOCK 1603 - LOTS 15.04 & 22
 BLOCK 1603 - LOTS 19.01 & 22
 THE GORE SHOWN IS PLOTTED IN ACCORDANCE WITH THE METES & BOUNDS DESCRIPTION APPEARING IN THE LAST DEED RECORD FOR EACH PARCEL & DOES NOT PURPORT TO REPRESENT TITLE OR OWNERSHIP STATUS IN ANY MANNER. THESE SITUATIONS ARE SUBJECT TO SOLUTION BY THE PROPERTY OWNERS CONCERNED.



SEE SHEET 23

SEE SHEET 36

SEE SHEET 36

SEE SHEET 36

SEE SHEET 53

SEE SHEET 54

SEE SHEET 36

NEW JERSEY DEPARTMENT OF THE TREASURY
 DIVISION OF TAXATION
 APPROVED AS A TAX MAP PURSUANT
 TO THE AUTHORITY OF
 N.J.S.A. 54:1-15 AND N.J.S.A. 54:50-1
 FOR THE DIRECTOR, DIVISION OF TAXATION
 SIGNED BY SUE DAWSON, CTA
 SUPERVISING FIELD REP
 DATED AUGUST 14, 2014 SERIAL # 1043

TAX MAP
TOWNSHIP OF HAMILTON
 MERCER COUNTY, NEW JERSEY
 SCALE 1" = 100' APRIL, 1996
MICHAEL GUERRIERO, P.L.S.
 T & M ASSOCIATES
 11 TINDALL ROAD, MIDDLETOWN TOWNSHIP
 NEW JERSEY, 07748
 "TO SHOW CONDITIONS AS OF JULY 14, 2014"