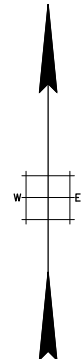
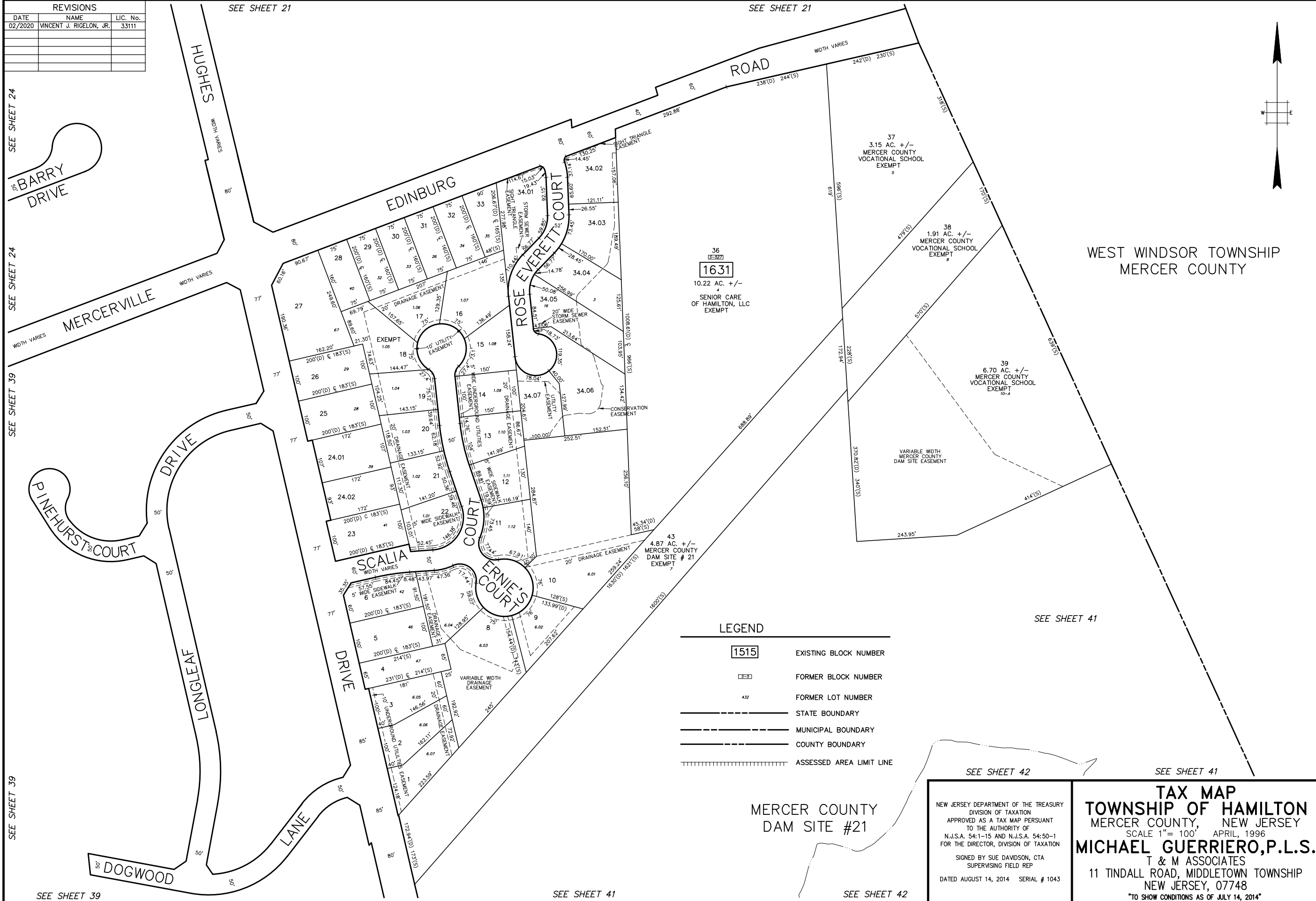


REVISIONS		
DATE	NAME	LIC. No.
02/2020	VINCENT J. RIGELON, JR.	33111



LEGEND

1515	EXISTING BLOCK NUMBER
1631	FORMER BLOCK NUMBER
432	FORMER LOT NUMBER
---	STATE BOUNDARY
---	MUNICIPAL BOUNDARY
---	COUNTY BOUNDARY
	ASSESSED AREA LIMIT LINE

MERCER COUNTY
DAM SITE #21

NEW JERSEY DEPARTMENT OF THE TREASURY
DIVISION OF TAXATION
APPROVED AS A TAX MAP PURSUANT
TO THE AUTHORITY OF
N.J.S.A. 54:1-15 AND N.J.S.A. 54:50-1
FOR THE DIRECTOR, DIVISION OF TAXATION
SIGNED BY SUE DAVDSON, CTA
SUPERVISING FIELD REP
DATED AUGUST 14, 2014 SERIAL # 1043

TAX MAP
TOWNSHIP OF HAMILTON
MERCER COUNTY, NEW JERSEY
SCALE 1" = 100' APRIL, 1996
MICHAEL GUERRIERO, P.L.S.
T & M ASSOCIATES
11 TINDALL ROAD, MIDDLETOWN TOWNSHIP
NEW JERSEY, 07748
"TO SHOW CONDITIONS AS OF JULY 14, 2014"

SEE SHEET 24
SEE SHEET 24
SEE SHEET 39
SEE SHEET 39
SEE SHEET 39
SEE SHEET 39

SEE SHEET 21

SEE SHEET 21

SEE SHEET 41

SEE SHEET 42

SEE SHEET 41

SEE SHEET 41

SEE SHEET 42

SEE SHEET 39