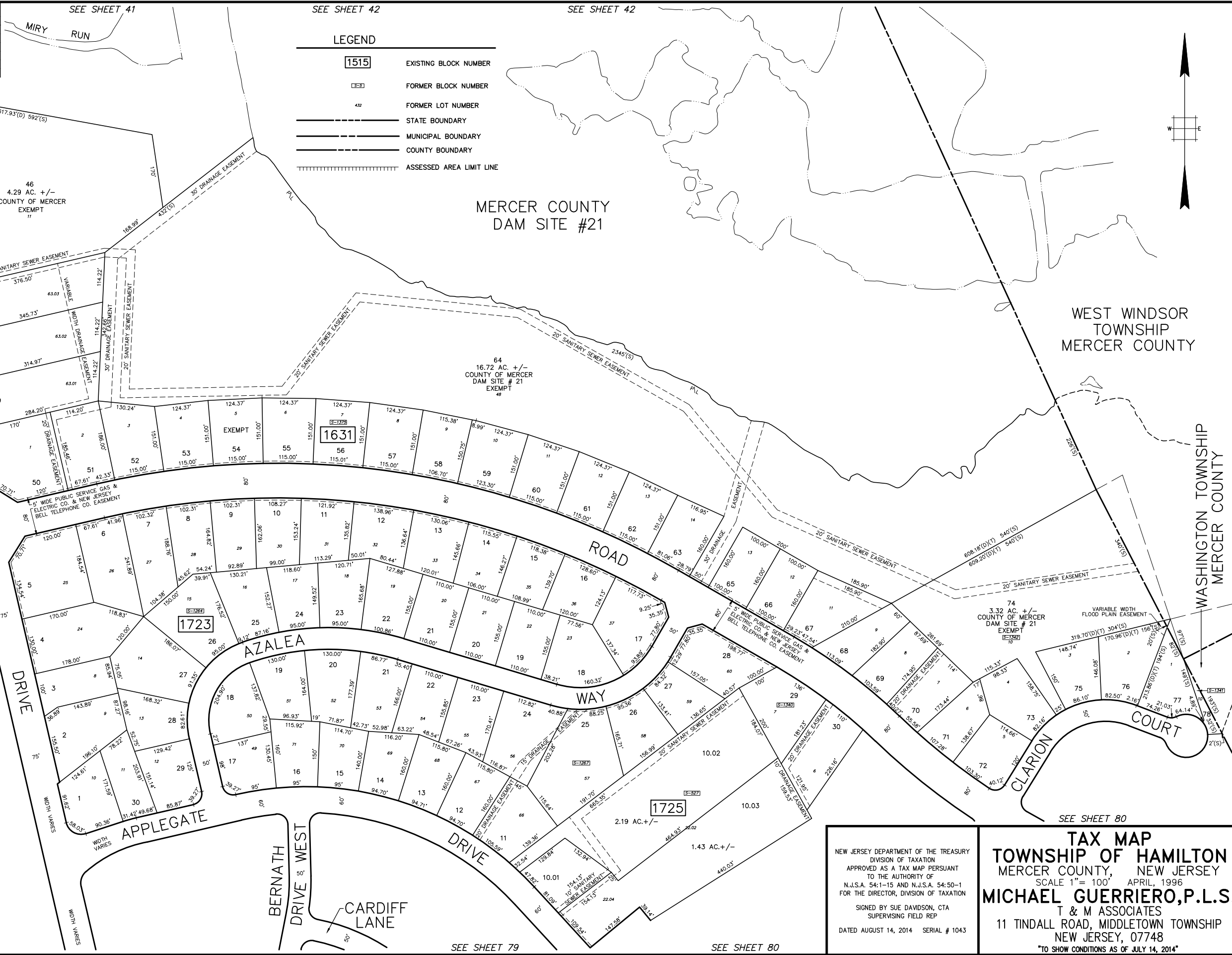
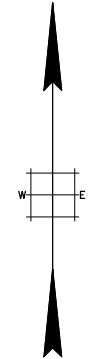


REVISIONS		
DATE	NAME	LIC. No.
02/2017	VINCENT J. RIGELON, JR.	33111



LEGEND

- 1515 EXISTING BLOCK NUMBER
- 5-3 FORMER BLOCK NUMBER
- 432 FORMER LOT NUMBER
- STATE BOUNDARY
- MUNICIPAL BOUNDARY
- COUNTY BOUNDARY
- ===== ASSESSED AREA LIMIT LINE



SEE SHEET 57

SEE SHEET 57

SEE SHEET 79

SEE SHEET 41

SEE SHEET 42

SEE SHEET 42

SEE SHEET 80

SEE SHEET 79

SEE SHEET 79

SEE SHEET 80

NEW JERSEY DEPARTMENT OF THE TREASURY
 DIVISION OF TAXATION
 APPROVED AS A TAX MAP PURSUANT
 TO THE AUTHORITY OF
 N.J.S.A. 54-1-15 AND N.J.S.A. 54-50-1
 FOR THE DIRECTOR, DIVISION OF TAXATION

SIGNED BY SUE DAVIDSON, CTA
 SUPERVISING FIELD REP

DATED AUGUST 14, 2014 SERIAL # 1043

TAX MAP
TOWNSHIP OF HAMILTON
 MERCER COUNTY, NEW JERSEY
 SCALE 1" = 100' APRIL, 1996
MICHAEL GUERRIERO, P.L.S.
 T & M ASSOCIATES
 11 TINDALL ROAD, MIDDLETOWN TOWNSHIP
 NEW JERSEY, 07748
 TO SHOW CONDITIONS AS OF JULY 14, 2014