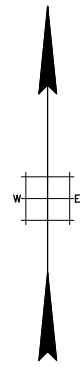
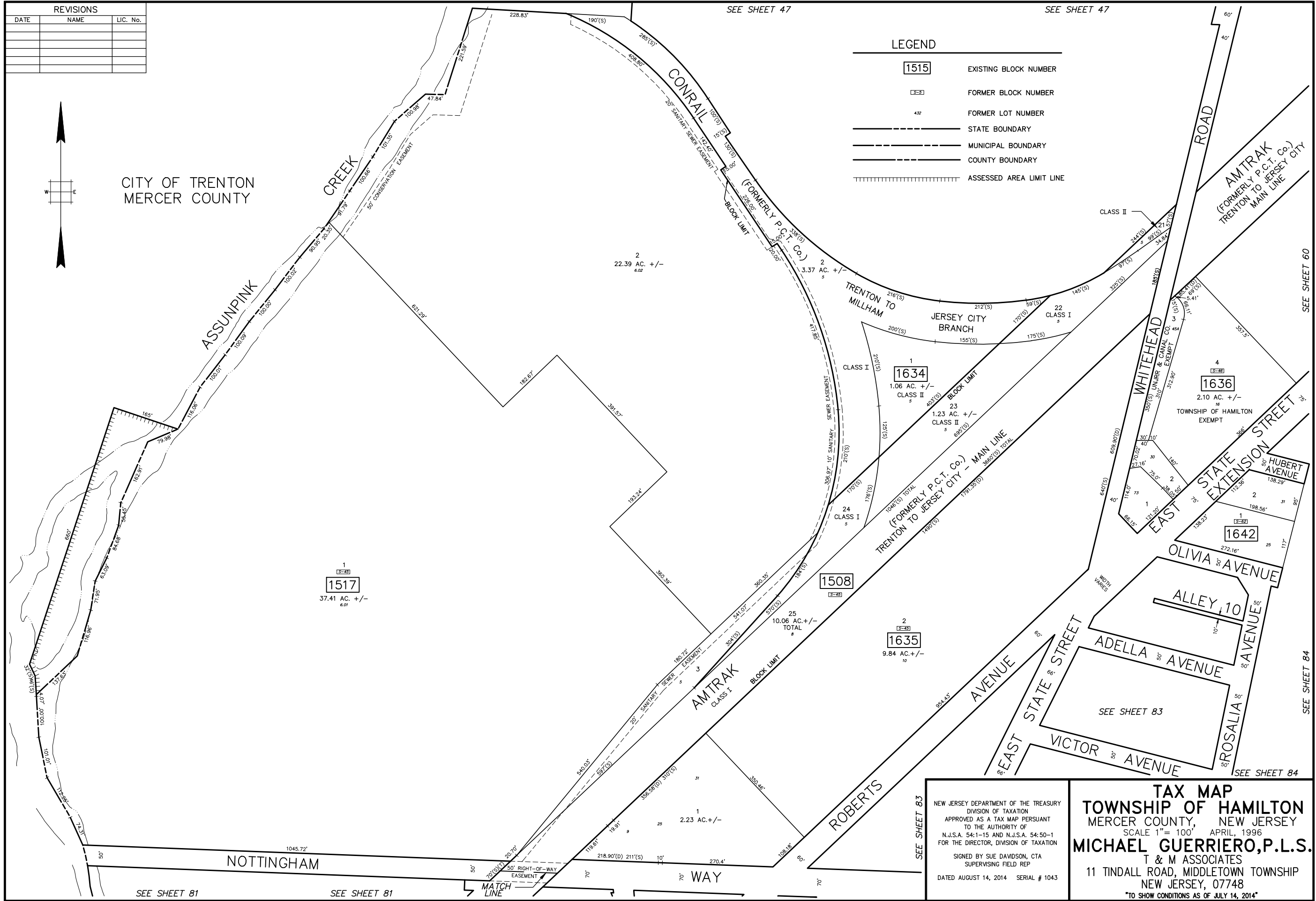


BASE INFO - DCA Rotation: 0°00'00" Base Point: 0,0

REVISIONS		
DATE	NAME	LIC. No.



CITY OF TRENTON
MERCER COUNTY



LEGEND

1515	EXISTING BLOCK NUMBER
15-51	FORMER BLOCK NUMBER
432	FORMER LOT NUMBER
—	STATE BOUNDARY
- - -	MUNICIPAL BOUNDARY
—	COUNTY BOUNDARY
	ASSESSED AREA LIMIT LINE

SEE SHEET 81

SEE SHEET 81

SEE SHEET 47

SEE SHEET 47

SEE SHEET 60

SEE SHEET 84

SEE SHEET 84

SEE SHEET 83

NEW JERSEY DEPARTMENT OF THE TREASURY
DIVISION OF TAXATION
APPROVED AS A TAX MAP PURSUANT
TO THE AUTHORITY OF
N.J.S.A. 54-1-15 AND N.J.S.A. 54-50-1
FOR THE DIRECTOR, DIVISION OF TAXATION
SIGNED BY SUE DAVIDSON, CTA
SUPERVISING FIELD REP
DATED AUGUST 14, 2014 SERIAL # 1043

TAX MAP
TOWNSHIP OF HAMILTON
MERCER COUNTY, NEW JERSEY
SCALE 1" = 100' APRIL, 1996
MICHAEL GUERRIERO, P.L.S.
T & M ASSOCIATES
11 TINDALL ROAD, MIDDLETOWN TOWNSHIP
NEW JERSEY, 07748
TO SHOW CONDITIONS AS OF JULY 14, 2014