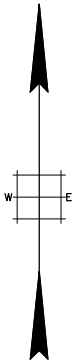


REVISIONS		
DATE	NAME	LIC. No.
03/2021	VINCENT J. RIGELON, JR.	33111

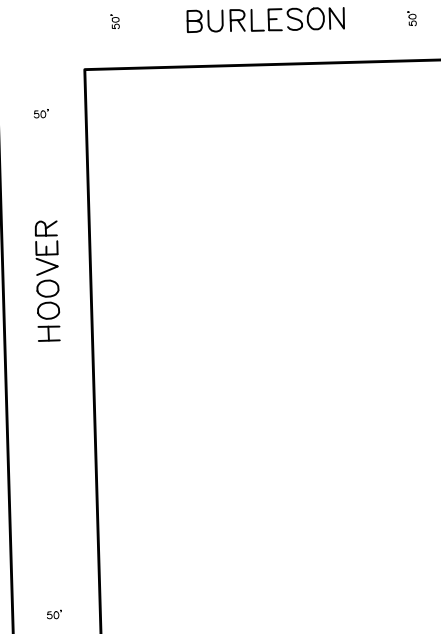
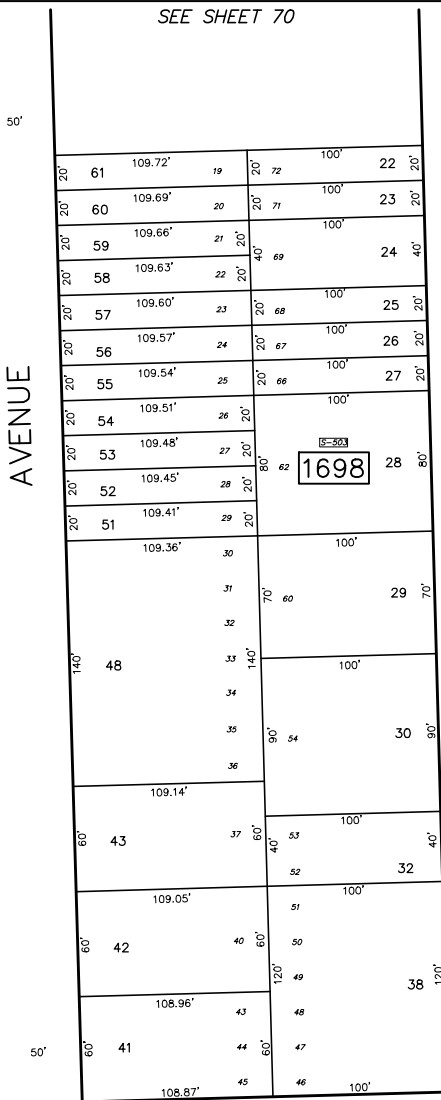
SEE SHEET 69



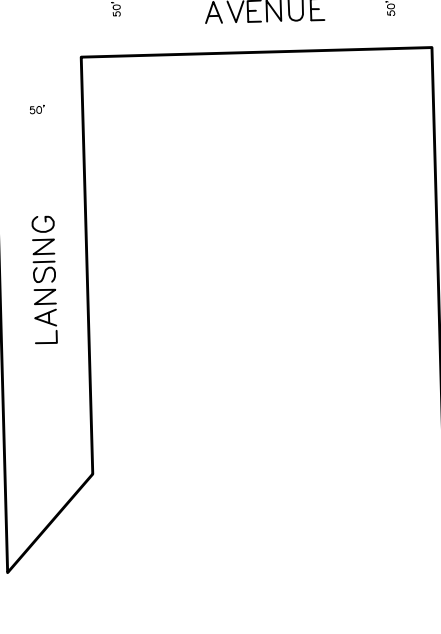
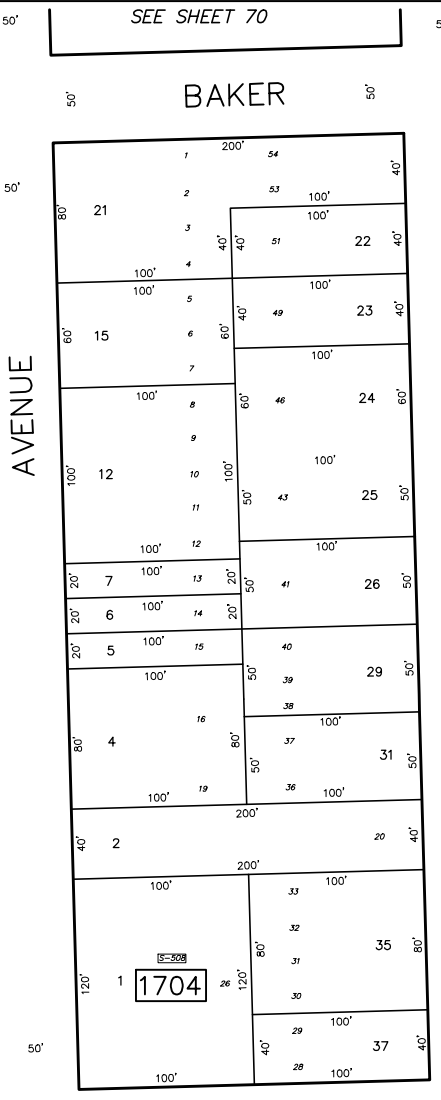
SEE SHEET 69

SEE SHEET 69

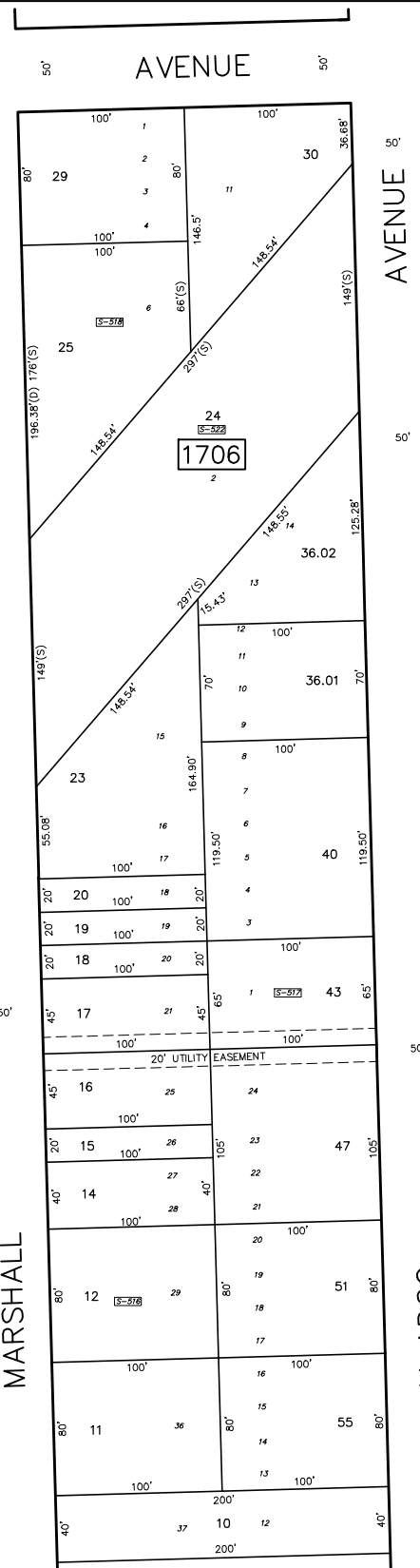
SEE SHEET 69



SEE SHEET 72



SEE SHEET 72



SEE SHEET 72

NEW JERSEY DEPARTMENT OF THE TREASURY
 DIVISION OF TAXATION
 APPROVED AS A TAX MAP PURSUANT
 TO THE AUTHORITY OF
 N.J.S.A. 54:1-15 AND N.J.S.A. 54:50-1
 FOR THE DIRECTOR, DIVISION OF TAXATION
 SIGNED BY SUE DAVDSON, CTA
 SUPERVISING FIELD REP
 DATED AUGUST 14, 2014 SERIAL # 1043

TAX MAP
TOWNSHIP OF HAMILTON
 MERCER COUNTY, NEW JERSEY
 SCALE 1" = 50' APRIL, 1996
MICHAEL GUERRIERO, P.L.S.
 T & M ASSOCIATES
 11 TINDALL ROAD, MIDDLETOWN TOWNSHIP
 NEW JERSEY, 07748
 TO SHOW CONDITIONS AS OF JULY 14, 2014

LEGEND

1515	EXISTING BLOCK NUMBER
S-5	FORMER BLOCK NUMBER
432	FORMER LOT NUMBER
-----	STATE BOUNDARY
-----	MUNICIPAL BOUNDARY
-----	COUNTY BOUNDARY
	ASSESSED AREA LIMIT LINE

ALTON ROAD
SEE SHEET 56

CORAL DRIVE
SEE SHEET 56