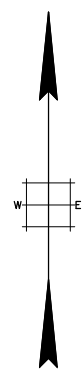


REVISIONS		
DATE	NAME	LIC. No.
01/2020	WINCENT J. RIGELON, JR.	33111

SEE SHEET 69



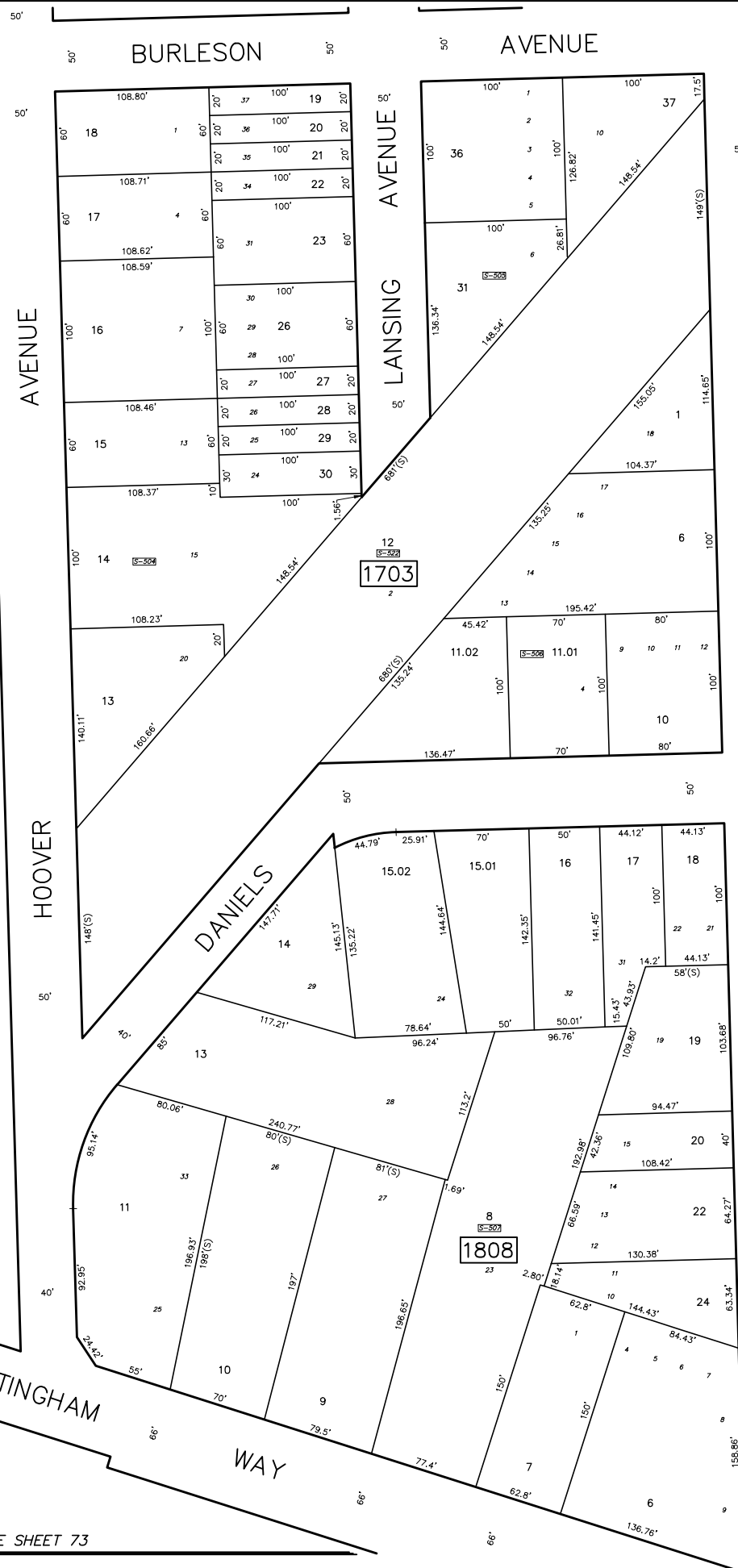
SEE SHEET 69

SEE SHEET 69

SHADY LANE
WIDTH VARIES

NOTTINGHAM WAY
WIDTH VARIES

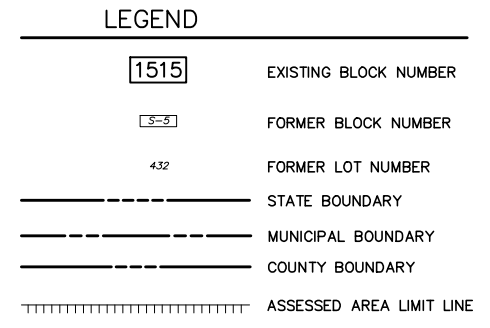
SEE SHEET 73



SEE SHEET 71

SEE SHEET 71

SEE SHEET 56



WILSON AVENUE

MARSHALL AVENUE

MCADOO AVENUE

ALTON ROAD

CORAL DRIVE

ALTON ROAD

STEVEN AVENUE

BARBARA LEE DRIVE

SEE SHEET 56

SEE SHEET 76

SEE SHEET 76

NEW JERSEY DEPARTMENT OF THE TREASURY
DIVISION OF TAXATION
APPROVED AS A TAX MAP PURSUANT
TO THE AUTHORITY OF
N.J.S.A. 54:1-15 AND N.J.S.A. 54:50-1
FOR THE DIRECTOR, DIVISION OF TAXATION
SIGNED BY SUE DAWSON, CTA
SUPERVISING FIELD REP
DATED AUGUST 14, 2014 SERIAL # 1043

TAX MAP
TOWNSHIP OF HAMILTON
MERCER COUNTY, NEW JERSEY
SCALE 1" = 50' APRIL, 1996
MICHAEL GUERRIERO, P.L.S.
T & M ASSOCIATES
11 TINDALL ROAD, MIDDLETOWN TOWNSHIP
NEW JERSEY, 07748
"TO SHOW CONDITIONS AS OF JULY 14, 2014"

SEE SHEET 74

SEE SHEET 74