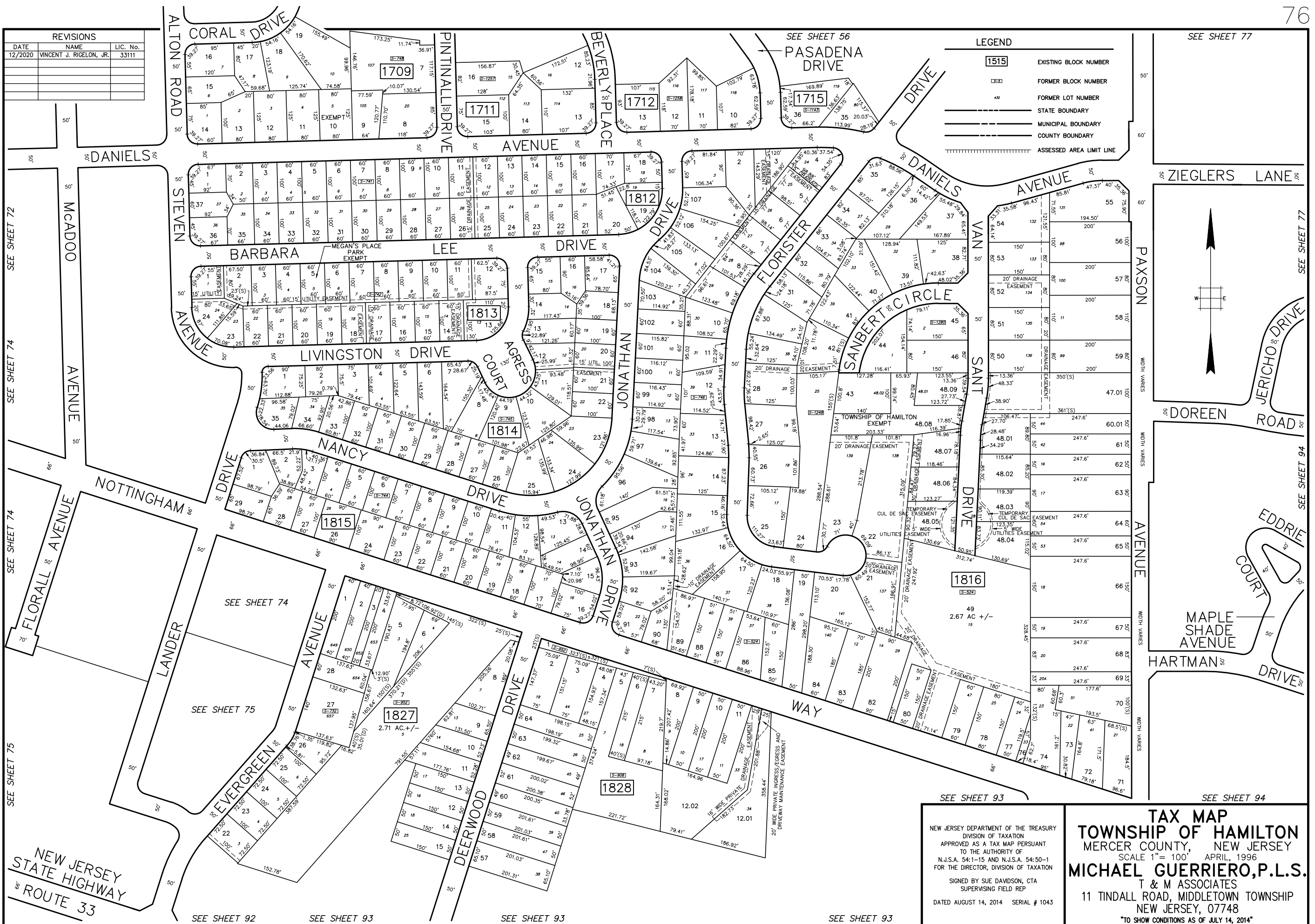
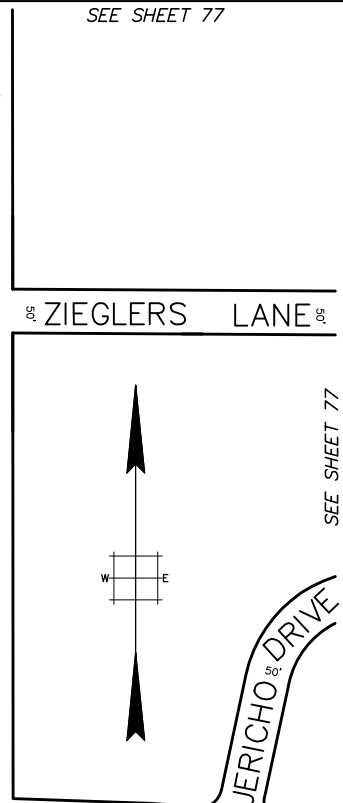


REVISIONS		
DATE	NAME	LIC. No.
12/2020	VINCENT J. RIGELON, JR.	33111

LEGEND	
1515	EXISTING BLOCK NUMBER
 	FORMER BLOCK NUMBER
42	FORMER LOT NUMBER
 	STATE BOUNDARY
 	MUNICIPAL BOUNDARY
 	COUNTY BOUNDARY
 	ASSESSED AREA LIMIT LINE



NEW JERSEY
STATE HIGHWAY
ROUTE 33

NEW JERSEY DEPARTMENT OF THE TREASURY
DIVISION OF TAXATION
APPROVED AS A TAX MAP PURSUANT
TO THE AUTHORITY OF
N.J.S.A. 54:1-15 AND N.J.S.A. 54:50-1
FOR THE DIRECTOR, DIVISION OF TAXATION
SIGNED BY SUE DAWSON, CTA
SUPERVISING FIELD REP
DATED AUGUST 14, 2014 SERIAL # 1043

TAX MAP
TOWNSHIP OF HAMILTON
MERCER COUNTY, NEW JERSEY
SCALE 1" = 100' APRIL, 1996
MICHAEL GUERRIERO, P.L.S.
T & M ASSOCIATES
11 TINDALL ROAD, MIDDLETOWN TOWNSHIP
NEW JERSEY, 07748
"TO SHOW CONDITIONS AS OF JULY 14, 2014"