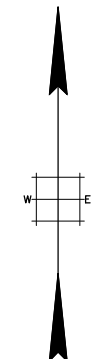
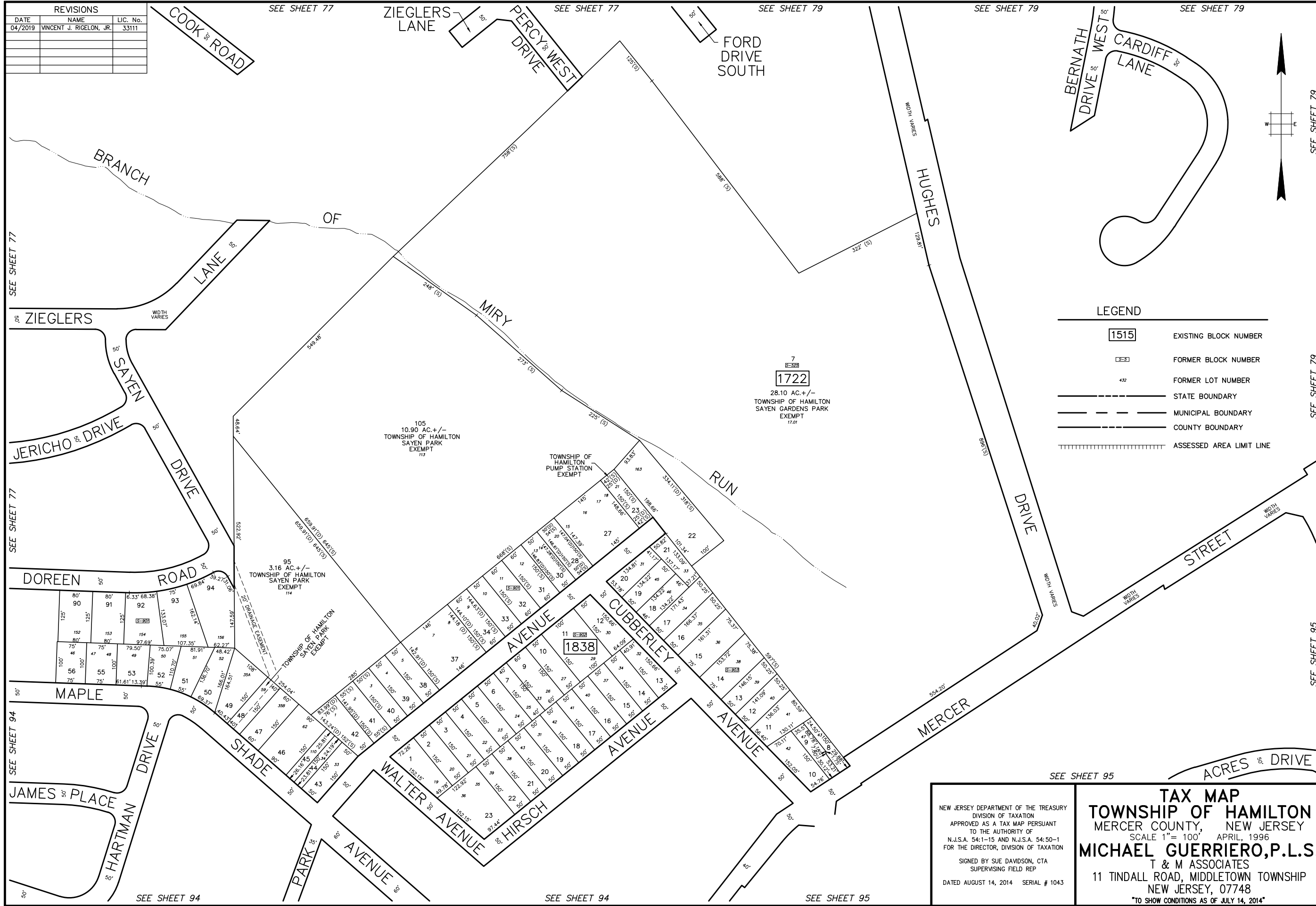


REVISIONS		
DATE	NAME	LIC. No.
04/2019	VINCENT J. RIGELON, JR.	33111



**LEGEND**

<span style="border: 1px solid black; padding: 2px;">1515</span>	EXISTING BLOCK NUMBER
<span style="border: 1px dashed black; padding: 2px;">1515</span>	FORMER BLOCK NUMBER
432	FORMER LOT NUMBER
---	STATE BOUNDARY
- - -	MUNICIPAL BOUNDARY
----	COUNTY BOUNDARY
	ASSESSED AREA LIMIT LINE

7  
1722  
 28.10 AC. +/-  
 TOWNSHIP OF HAMILTON  
 SAYEN GARDENS PARK  
 EXEMPT  
 17.01

11  
1838

NEW JERSEY DEPARTMENT OF THE TREASURY  
 DIVISION OF TAXATION  
 APPROVED AS A TAX MAP PURSUANT  
 TO THE AUTHORITY OF  
 N.J.S.A. 54-1-15 AND N.J.S.A. 54:50-1  
 FOR THE DIRECTOR, DIVISION OF TAXATION  
 SIGNED BY SUE DAVIDSON, CTA  
 SUPERVISING FIELD REP  
 DATED AUGUST 14, 2014 SERIAL # 1043

**TAX MAP**  
**TOWNSHIP OF HAMILTON**  
 MERCER COUNTY, NEW JERSEY  
 SCALE 1"= 100' APRIL, 1996  
**MICHAEL GUERRIERO, P.L.S.**  
 T & M ASSOCIATES  
 11 TINDALL ROAD, MIDDLETOWN TOWNSHIP  
 NEW JERSEY, 07748  
 \*TO SHOW CONDITIONS AS OF JULY 14, 2014\*

SEE SHEET 77

SEE SHEET 77

SEE SHEET 94

SEE SHEET 94

SEE SHEET 94

SEE SHEET 95

SEE SHEET 95

SEE SHEET 79

SEE SHEET 79

SEE SHEET 95