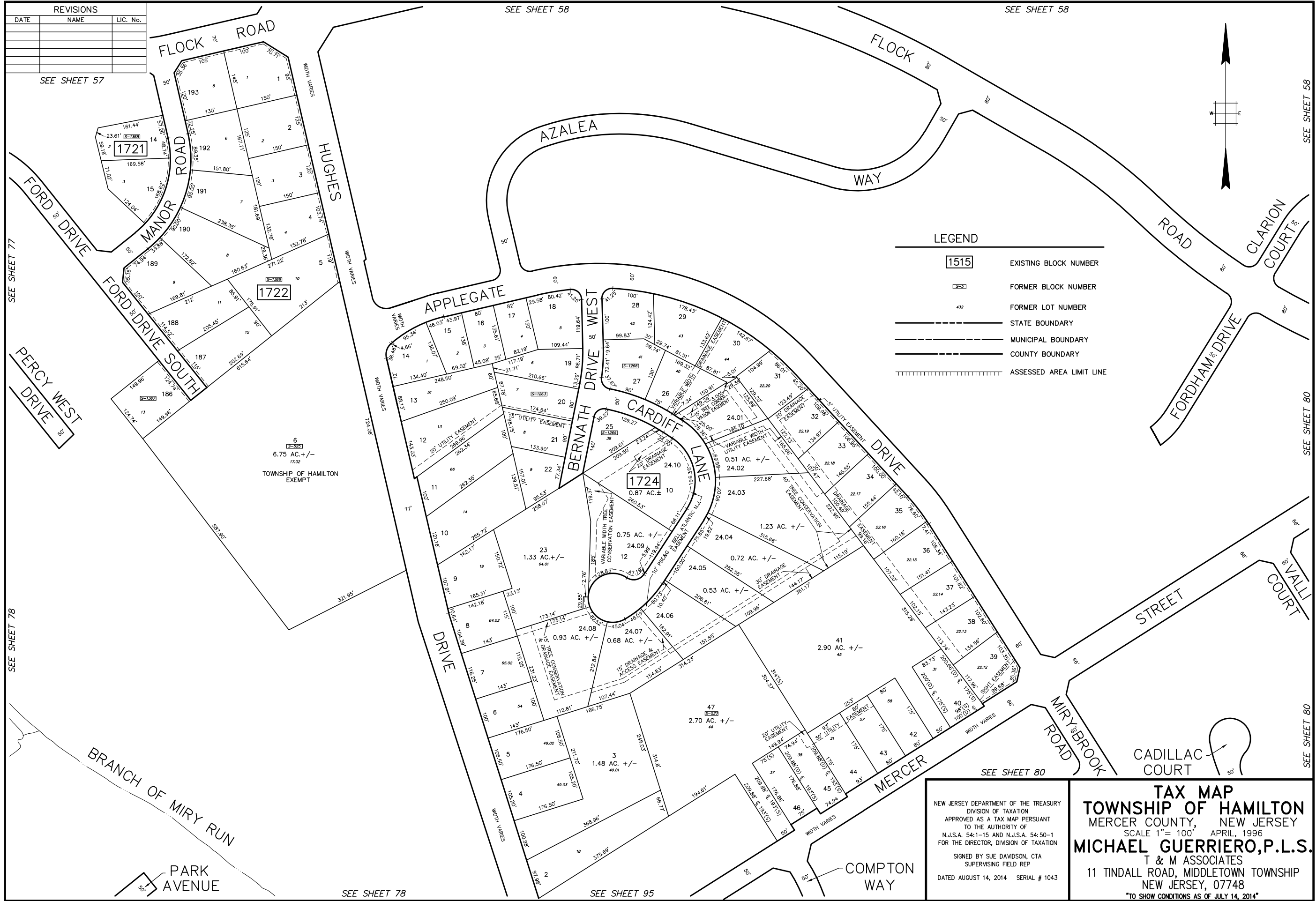


PLOTTED: 04/04/96

BASE INFO - DCA Rotation: 0°00'00" Base Point: 0.0

REVISIONS		
DATE	NAME	LIC. No.



LEGEND

1515	EXISTING BLOCK NUMBER
3-3	FORMER BLOCK NUMBER
432	FORMER LOT NUMBER
---	STATE BOUNDARY
---	MUNICIPAL BOUNDARY
---	COUNTY BOUNDARY
	ASSESSED AREA LIMIT LINE

NEW JERSEY DEPARTMENT OF THE TREASURY
 DIVISION OF TAXATION
 APPROVED AS A TAX MAP PURSUANT
 TO THE AUTHORITY OF
 N.J.S.A. 54:1-15 AND N.J.S.A. 54:50-1
 FOR THE DIRECTOR, DIVISION OF TAXATION
 SIGNED BY SUE DAVIDSON, CTA
 SUPERVISING FIELD REP
 DATED AUGUST 14, 2014 SERIAL # 1043

TAX MAP
TOWNSHIP OF HAMILTON
 MERCER COUNTY, NEW JERSEY
 SCALE 1" = 100' APRIL, 1996
MICHAEL GUERRIERO, P.L.S.
 T & M ASSOCIATES
 11 TINDALL ROAD, MIDDLETOWN TOWNSHIP
 NEW JERSEY, 07748
 TO SHOW CONDITIONS AS OF JULY 14, 2014