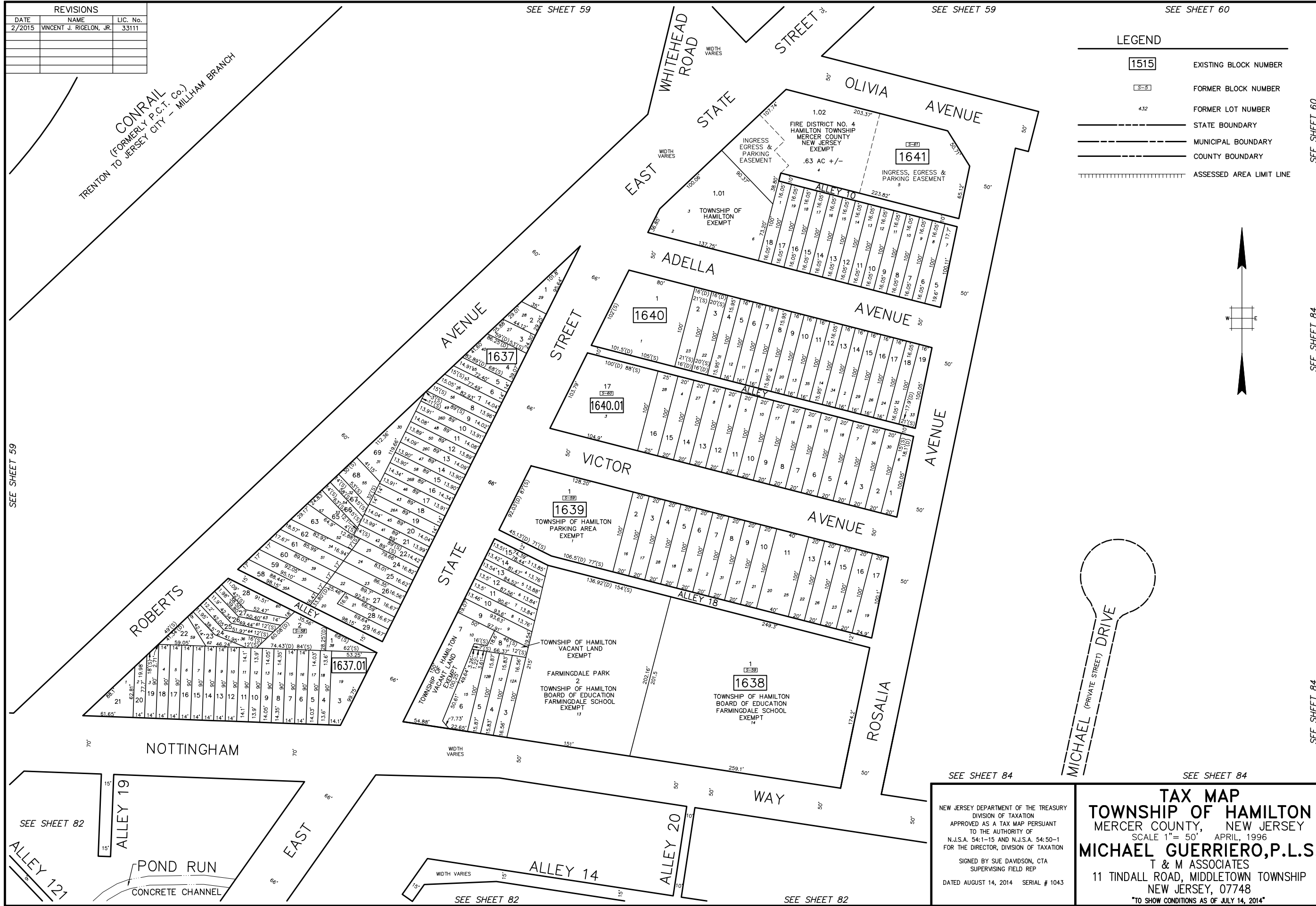


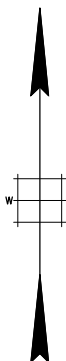
BASE INFO - DCA Relation: 0'00"00" Base Point: 0,0

REVISIONS		
DATE	NAME	LIC. No.
2/2015	VINCENT J. RIGELON, JR.	33111



**LEGEND**

<span style="border: 1px solid black; padding: 2px;">1515</span>	EXISTING BLOCK NUMBER
<span style="border: 1px dashed black; padding: 2px;">5-5</span>	FORMER BLOCK NUMBER
432	FORMER LOT NUMBER
---	STATE BOUNDARY
- - - -	MUNICIPAL BOUNDARY
----	COUNTY BOUNDARY
	ASSESSED AREA LIMIT LINE



SEE SHEET 59

SEE SHEET 59

SEE SHEET 59

SEE SHEET 60

SEE SHEET 60

SEE SHEET 84

SEE SHEET 84

SEE SHEET 82

SEE SHEET 84

SEE SHEET 84

ALLEY 121

POND RUN  
CONCRETE CHANNEL

ALLEY 14

ALLEY 20

SEE SHEET 82

NEW JERSEY DEPARTMENT OF THE TREASURY  
DIVISION OF TAXATION  
APPROVED AS A TAX MAP PURSUANT  
TO THE AUTHORITY OF  
N.J.S.A. 54-1-15 AND N.J.S.A. 54-50-1  
FOR THE DIRECTOR, DIVISION OF TAXATION

SIGNED BY SUE DAVIDSON, CTA  
SUPERVISING FIELD REP

DATED AUGUST 14, 2014 SERIAL # 1043

**TAX MAP**  
**TOWNSHIP OF HAMILTON**  
MERCER COUNTY, NEW JERSEY  
SCALE 1" = 50' APRIL, 1996  
**MICHAEL GUERRIERO, P.L.S.**  
T & M ASSOCIATES  
11 TINDALL ROAD, MIDDLETOWN TOWNSHIP  
NEW JERSEY, 07748  
\*TO SHOW CONDITIONS AS OF JULY 14, 2014\*