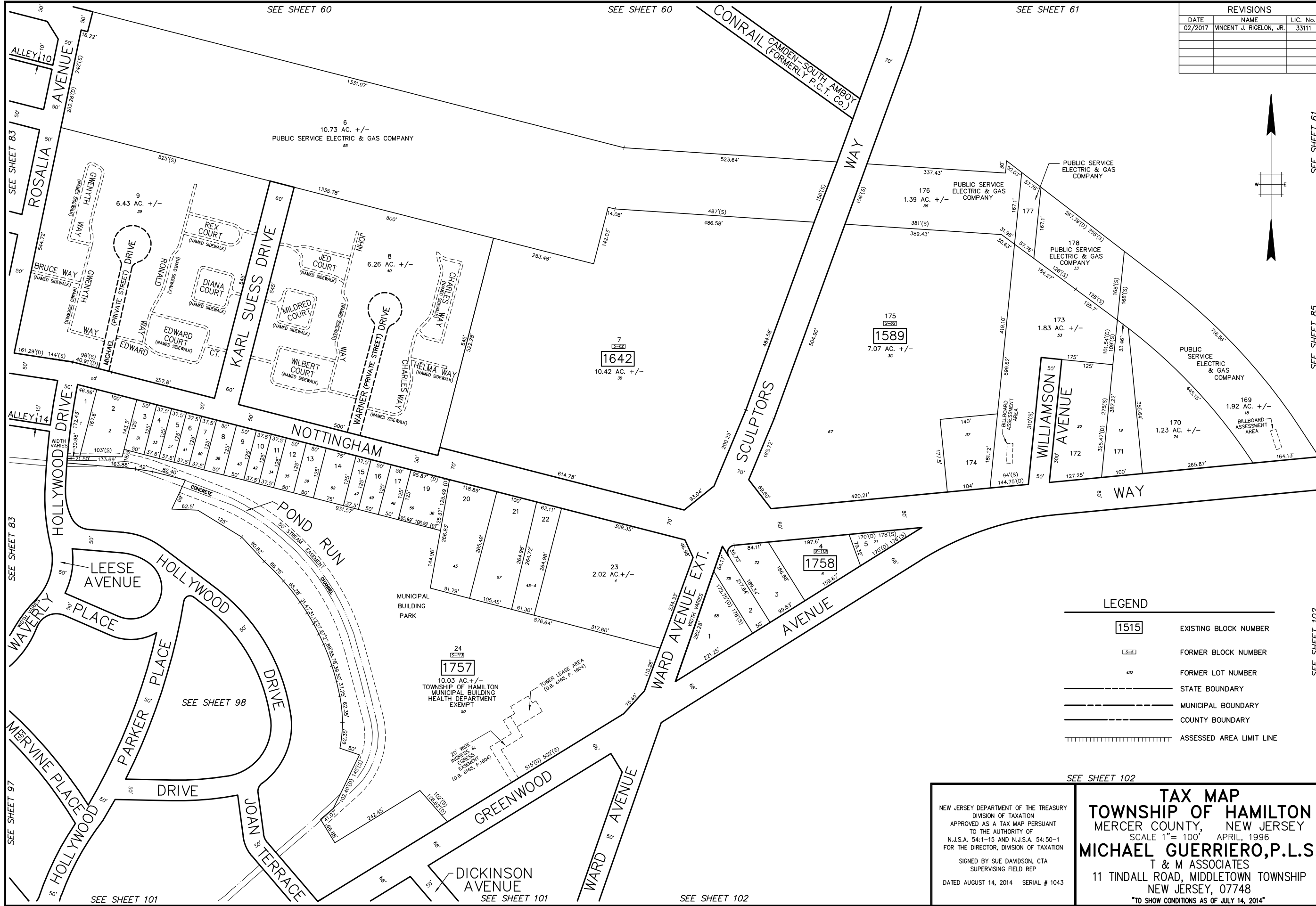
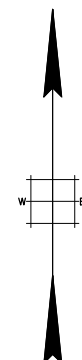


REVISIONS		
DATE	NAME	LIC. No.
02/2017	VINCENT J. RIGELON, JR.	33111



LEGEND

1515	EXISTING BLOCK NUMBER
15-21	FORMER BLOCK NUMBER
432	FORMER LOT NUMBER
—————	STATE BOUNDARY
- - - - -	MUNICIPAL BOUNDARY
—————	COUNTY BOUNDARY
	ASSESSED AREA LIMIT LINE

SEE SHEET 102

TAX MAP
TOWNSHIP OF HAMILTON
 MERCER COUNTY, NEW JERSEY
 SCALE 1" = 100' APRIL, 1996
MICHAEL GUERRIERO, P.L.S.
 T & M ASSOCIATES
 11 TINDALL ROAD, MIDDLETOWN TOWNSHIP
 NEW JERSEY, 07748
 TO SHOW CONDITIONS AS OF JULY 14, 2014

NEW JERSEY DEPARTMENT OF THE TREASURY
 DIVISION OF TAXATION
 APPROVED AS A TAX MAP PURSUANT
 TO THE AUTHORITY OF
 N.J.S.A. 54:1-15 AND N.J.S.A. 54:50-1
 FOR THE DIRECTOR, DIVISION OF TAXATION
 SIGNED BY SUE DAVIDSON, CTA
 SUPERVISING FIELD REP
 DATED AUGUST 14, 2014 SERIAL # 1043

SEE SHEET 61

SEE SHEET 85

SEE SHEET 102

SEE SHEET 60

SEE SHEET 60

SEE SHEET 61

SEE SHEET 83

SEE SHEET 83

SEE SHEET 97

SEE SHEET 101

SEE SHEET 101

SEE SHEET 102