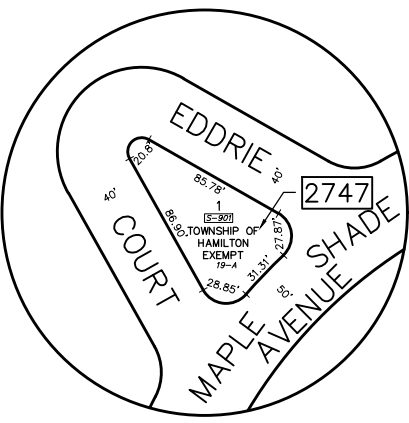
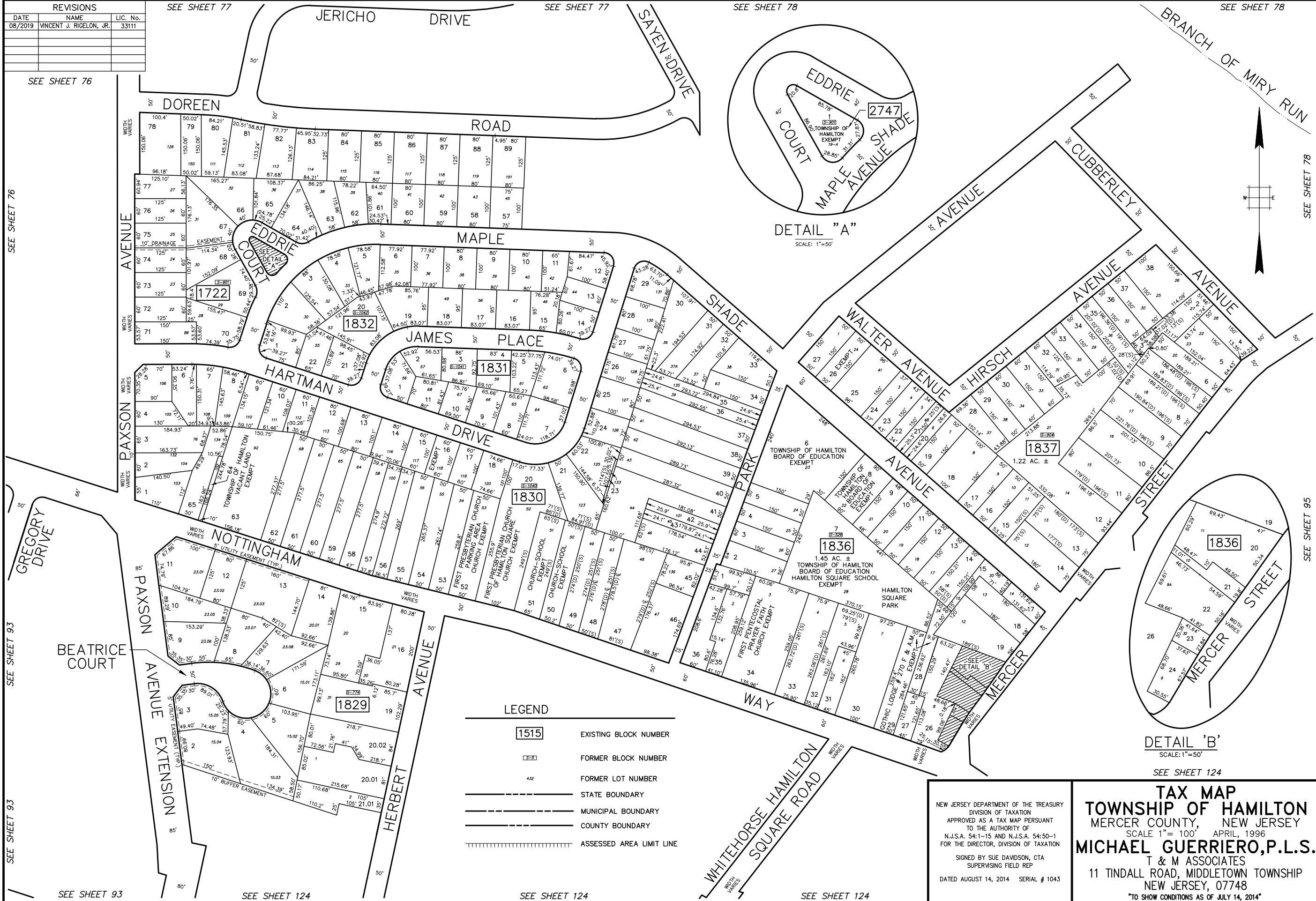
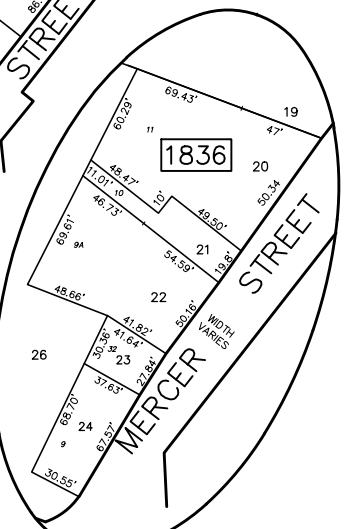


REVISIONS		
DATE	NAME	LIC. No.
08/2019	VINCENT J. RIGELON, JR.	33111



DETAIL "A"
SCALE: 1"=50'



DETAIL "B"
SCALE: 1"=50'

LEGEND

1515	EXISTING BLOCK NUMBER
1515	FORMER BLOCK NUMBER
432	FORMER LOT NUMBER
—	STATE BOUNDARY
- - -	MUNICIPAL BOUNDARY
—	COUNTY BOUNDARY
	ASSESSED AREA LIMIT LINE

NEW JERSEY DEPARTMENT OF THE TREASURY
DIVISION OF TAXATION
APPROVED AS A TAX MAP PURSUANT
TO THE AUTHORITY OF
N.J.S.A. 54:1-15 AND N.J.S.A. 54:50-1
FOR THE DIRECTOR, DIVISION OF TAXATION
SIGNED BY SUE DAVDSON, CTA
SUPERVISING FIELD REP
DATED AUGUST 14, 2014 SERIAL # 1043

TAX MAP
TOWNSHIP OF HAMILTON
MERCER COUNTY, NEW JERSEY
SCALE 1"= 100' APRIL, 1996
MICHAEL GUERRIERO, P.L.S.
T & M ASSOCIATES
11 TINDALL ROAD, MIDDLETOWN TOWNSHIP
NEW JERSEY, 07748
"TO SHOW CONDITIONS AS OF JULY 14, 2014"

SEE SHEET 76

SEE SHEET 93

SEE SHEET 93

SEE SHEET 93

SEE SHEET 124

SEE SHEET 124

SEE SHEET 124

SEE SHEET 77

SEE SHEET 77

SEE SHEET 78

SEE SHEET 78

SEE SHEET 78

SEE SHEET 95