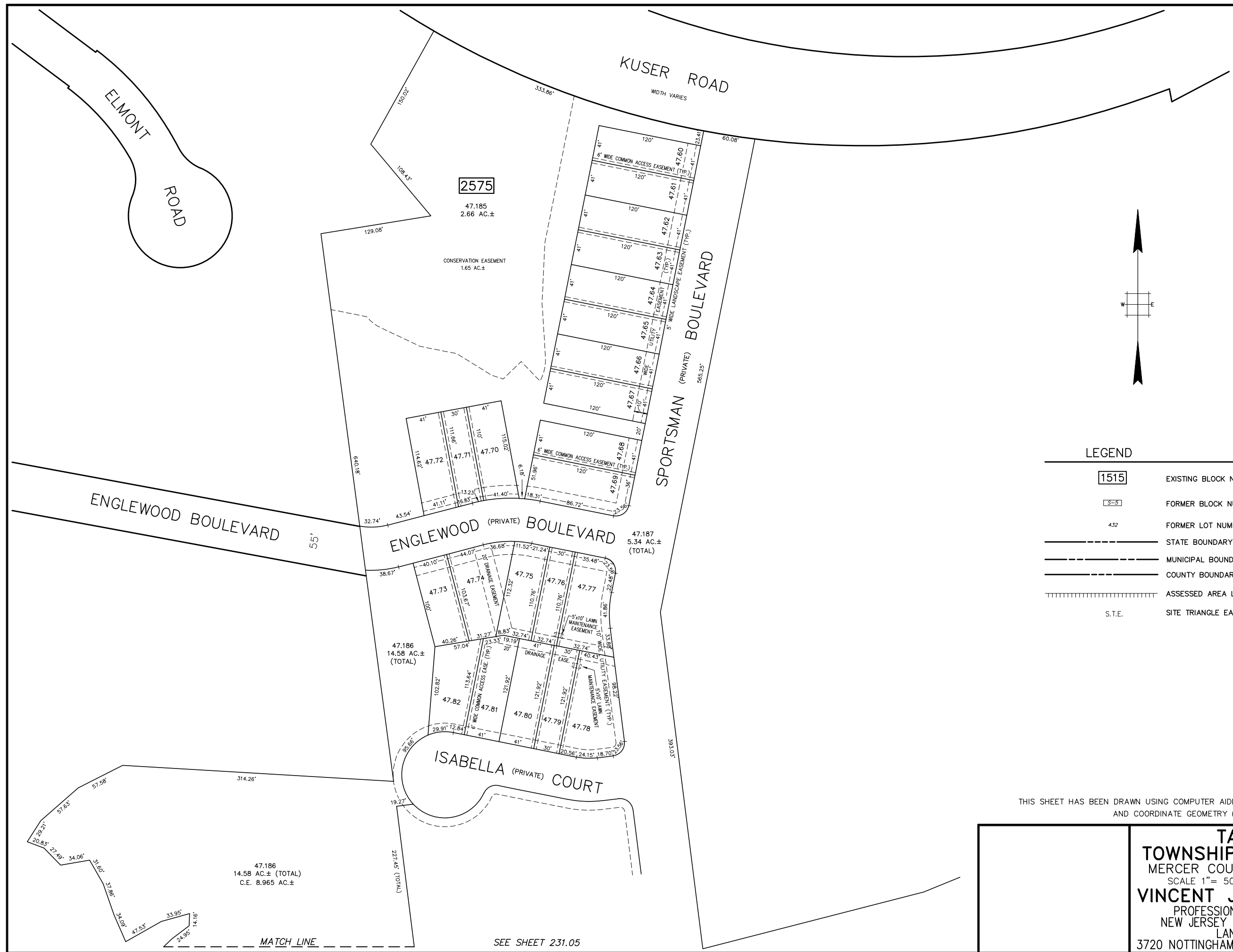


REVISIONS		
DATE	NAME	LIC. No.



LEGEND

- 1515 EXISTING BLOCK NUMBER
- S-S FORMER BLOCK NUMBER
- 432 FORMER LOT NUMBER
- STATE BOUNDARY
- MUNICIPAL BOUNDARY
- COUNTY BOUNDARY
- ||||| ASSESSED AREA LIMIT LINE
- S.T.E. SITE TRIANGLE EASEMENT

THIS SHEET HAS BEEN DRAWN USING COMPUTER AIDED DRAFTING/DESIGN (CAD/D) AND COORDINATE GEOMETRY (COGO)

TAX MAP
TOWNSHIP OF HAMILTON
 MERCER COUNTY, NEW JERSEY
 SCALE 1" = 50' DECEMBER 24, 2022
VINCENT J. RIGELON, JR.
 PROFESSIONAL LAND SURVEYOR
 NEW JERSEY LICENSE NUMBER 33111
 LAND MAP, INC.
 3720 NOTTINGHAM WAY HAMILTON, NJ 08690

SEE SHEET 231