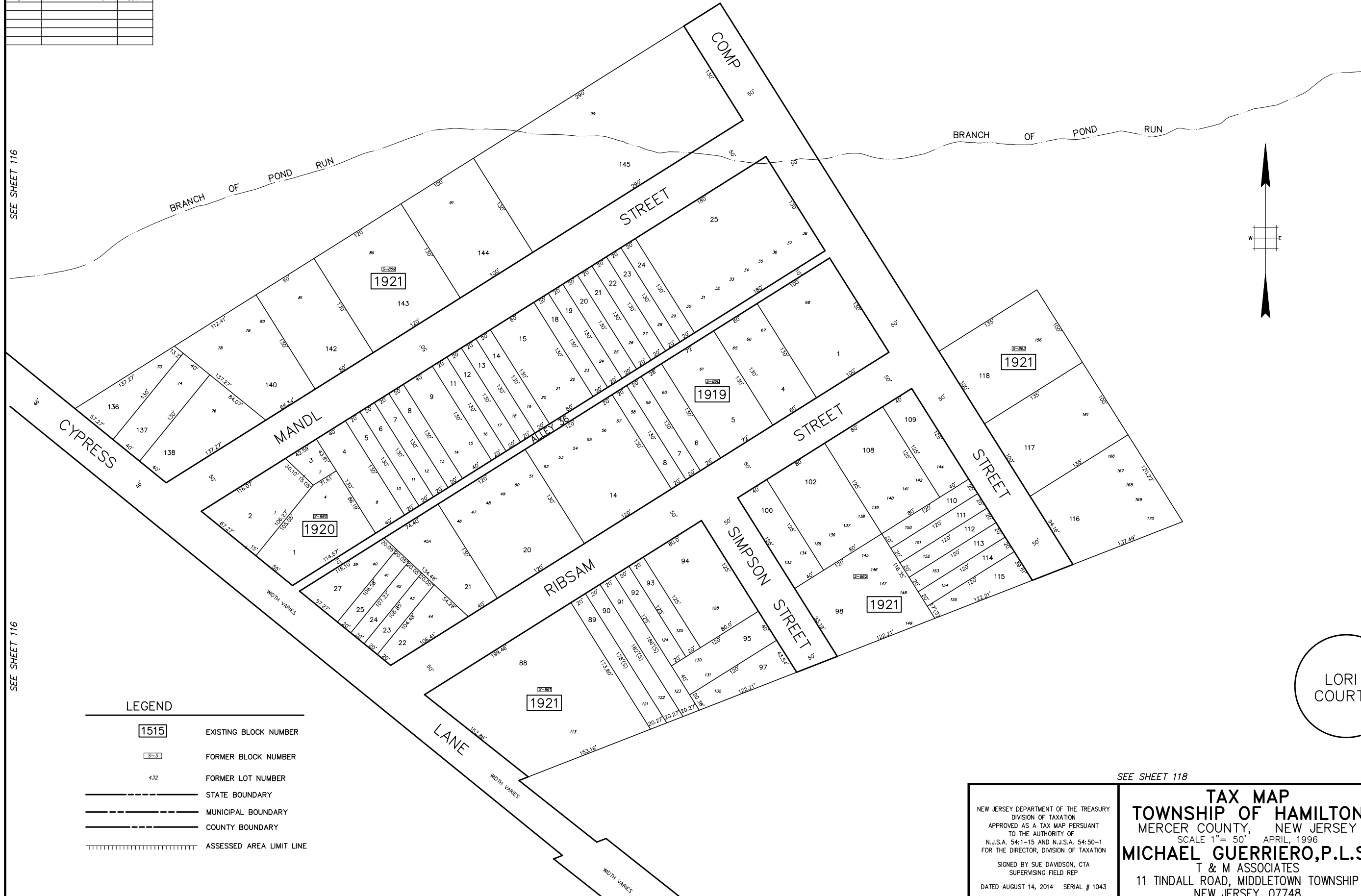


REVISIONS		
DATE	NAME	LIC. No.
12/2016	VINCENT J. RIGELON, JR.	33111

SEE SHEET 116

SEE SHEET 116



SEE SHEET 116

SEE SHEET 116

SEE SHEET 116

SEE SHEET 119

SEE SHEET 118

LEGEND

- 1515 EXISTING BLOCK NUMBER
- 5-3 FORMER BLOCK NUMBER
- 4.32 FORMER LOT NUMBER
- STATE BOUNDARY
- - - - - MUNICIPAL BOUNDARY
- - - - - COUNTY BOUNDARY
- ||||| ASSESSED AREA LIMIT LINE

SEE SHEET 116

SEE SHEET 118

SEE SHEET 118

LORI COURT

SEE SHEET 118

<p>NEW JERSEY DEPARTMENT OF THE TREASURY DIVISION OF TAXATION APPROVED AS A TAX MAP PURSUANT TO THE AUTHORITY OF N.J.S.A. 54:1-15 AND N.J.S.A. 54:50-1 FOR THE DIRECTOR, DIVISION OF TAXATION</p> <p>SIGNED BY SUE DAVIDSON, CTA SUPERVISING FIELD REP</p> <p>DATED AUGUST 14, 2014 SERIAL # 1043</p>	<p>TAX MAP TOWNSHIP OF HAMILTON MERCER COUNTY, NEW JERSEY SCALE 1" = 50' APRIL, 1996 MICHAEL GUERRIERO, P.L.S. T & M ASSOCIATES 11 TINDALL ROAD, MIDDLETOWN TOWNSHIP NEW JERSEY, 07748 *TO SHOW CONDITIONS AS OF JULY 14, 2014*</p>
---	--