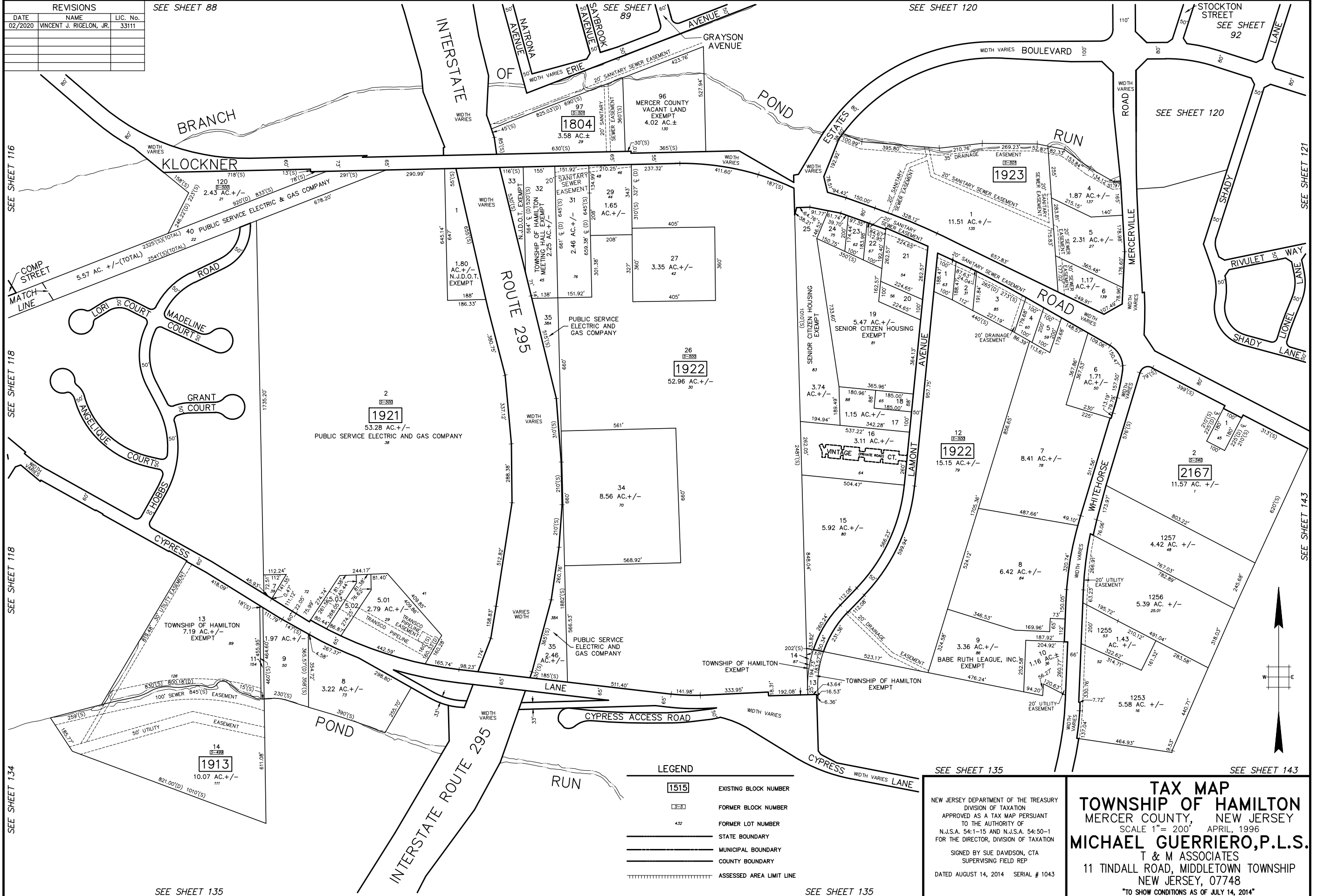


REVISIONS		
DATE	NAME	LIC. No.
02/2020	VINCENT J. RIGELON, JR.	33111

SEE SHEET 88



SEE SHEET 116

SEE SHEET 118

SEE SHEET 118

SEE SHEET 134

SEE SHEET 135

SEE SHEET 120

SEE SHEET 121

SEE SHEET 143

SEE SHEET 143

LEGEND

1515	EXISTING BLOCK NUMBER
5-5	FORMER BLOCK NUMBER
432	FORMER LOT NUMBER
—	STATE BOUNDARY
—	MUNICIPAL BOUNDARY
—	COUNTY BOUNDARY
	ASSESSED AREA LIMIT LINE

SEE SHEET 135

SEE SHEET 135

NEW JERSEY DEPARTMENT OF THE TREASURY
 DIVISION OF TAXATION
 APPROVED AS A TAX MAP PURSUANT
 TO THE AUTHORITY OF
 N.J.S.A. 54:1-15 AND N.J.S.A. 54:50-1
 FOR THE DIRECTOR, DIVISION OF TAXATION
 SIGNED BY SUE DAVISON, CTA
 SUPERVISING FIELD REP
 DATED AUGUST 14, 2014 SERIAL # 1043

TAX MAP
TOWNSHIP OF HAMILTON
 MERCER COUNTY, NEW JERSEY
 SCALE 1" = 200' APRIL, 1996
MICHAEL GUERRIERO, P.L.S.
 T & M ASSOCIATES
 11 TINDALL ROAD, MIDDLETOWN TOWNSHIP
 NEW JERSEY, 07748
 TO SHOW CONDITIONS AS OF JULY 14, 2014

