

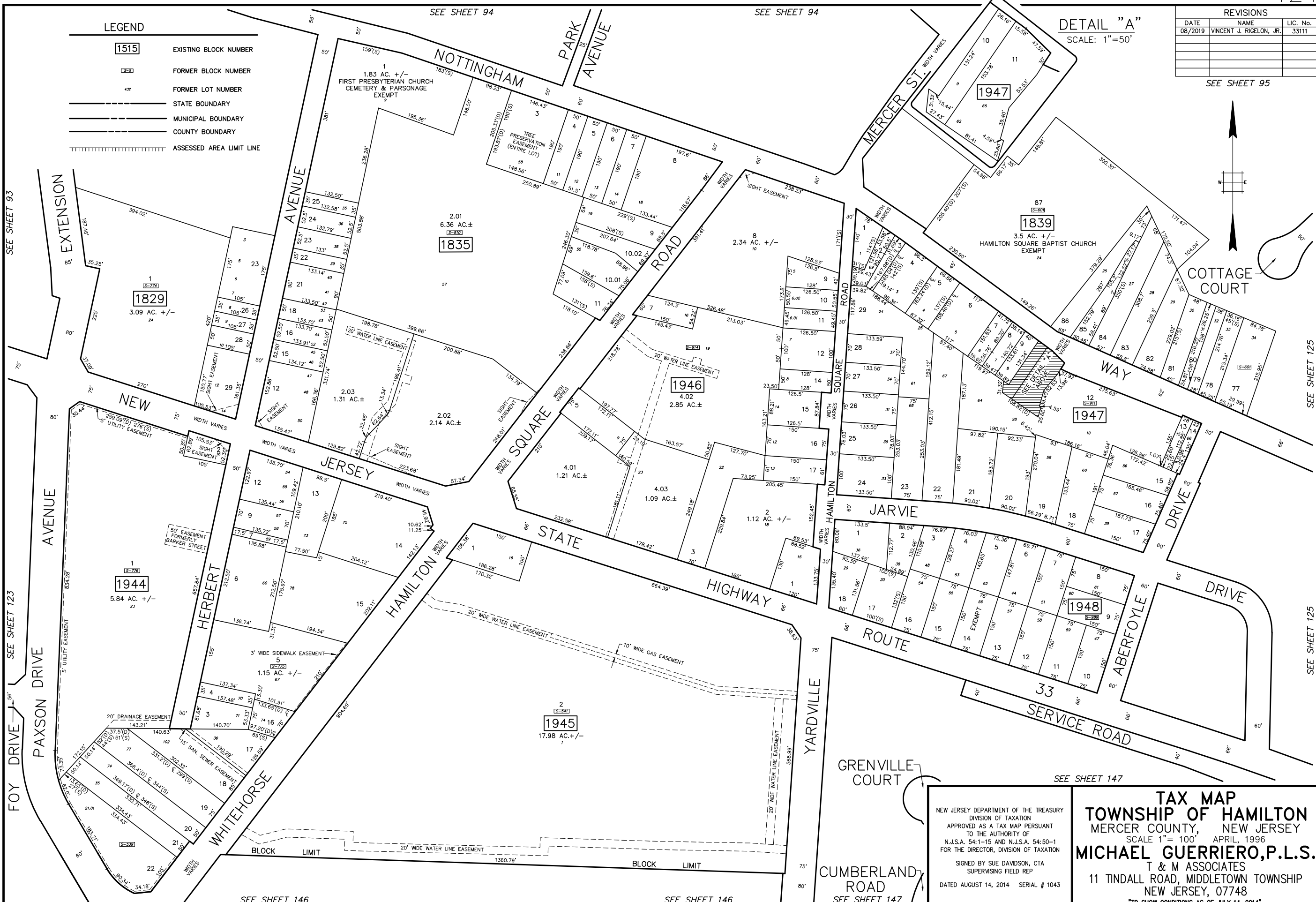
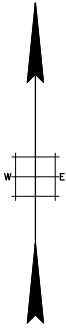
LEGEND

- 1515 EXISTING BLOCK NUMBER
- 1515 FORMER BLOCK NUMBER
- 42 FORMER LOT NUMBER
- STATE BOUNDARY
- MUNICIPAL BOUNDARY
- COUNTY BOUNDARY
- ===== ASSESSED AREA LIMIT LINE

DETAIL "A"
SCALE: 1"=50'

REVISIONS		
DATE	NAME	LIC. No.
08/2019	VINCENT J. RIGOLON, JR.	33111

SEE SHEET 95



SEE SHEET 93

SEE SHEET 123

SEE SHEET 146

SEE SHEET 146

SEE SHEET 125

SEE SHEET 125

NEW JERSEY DEPARTMENT OF THE TREASURY
 DIVISION OF TAXATION
 APPROVED AS A TAX MAP PURSUANT
 TO THE AUTHORITY OF
 N.J.S.A. 54:1-15 AND N.J.S.A. 54:50-1
 FOR THE DIRECTOR, DIVISION OF TAXATION
 SIGNED BY SUE DAVDSON, CTA
 SUPERVISING FIELD REP
 DATED AUGUST 14, 2014 SERIAL # 1043

TAX MAP
TOWNSHIP OF HAMILTON
 MERCER COUNTY, NEW JERSEY
 SCALE 1"= 100' APRIL, 1996
MICHAEL GUERRIERO, P.L.S.
 T & M ASSOCIATES
 11 TINDALL ROAD, MIDDLETOWN TOWNSHIP
 NEW JERSEY, 07748
 TO SHOW CONDITIONS AS OF JULY 14, 2014