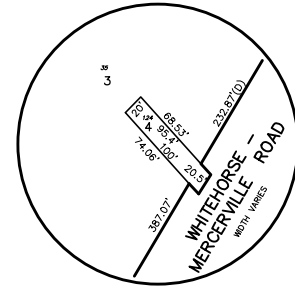
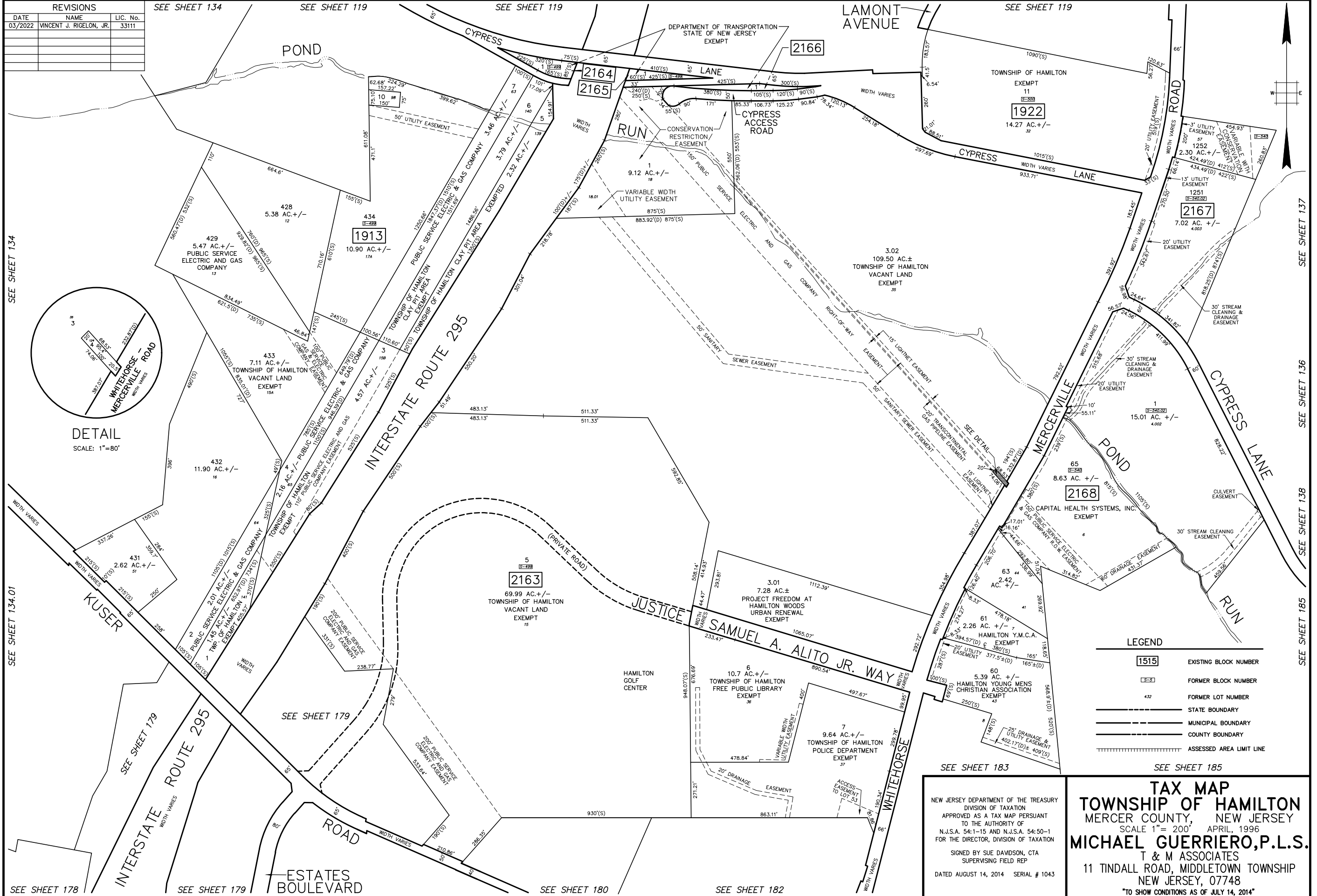


REVISIONS		
DATE	NAME	LIC. No.
03/2022	VINCENT J. RIGELON, JR.	33111



DETAIL
SCALE: 1"=80'

LEGEND

1515	EXISTING BLOCK NUMBER
1515	FORMER BLOCK NUMBER
432	FORMER LOT NUMBER
—	STATE BOUNDARY
- - -	MUNICIPAL BOUNDARY
—	COUNTY BOUNDARY
	ASSESSED AREA LIMIT LINE

NEW JERSEY DEPARTMENT OF THE TREASURY
DIVISION OF TAXATION
APPROVED AS A TAX MAP PURSUANT
TO THE AUTHORITY OF
N.J.S.A. 54:1-15 AND N.J.S.A. 54:50-1
FOR THE DIRECTOR, DIVISION OF TAXATION
SIGNED BY SUE DAVIDSON, CTA
SUPERVISING FIELD REP
DATED AUGUST 14, 2014 SERIAL # 1043

TAX MAP
TOWNSHIP OF HAMILTON
MERCER COUNTY, NEW JERSEY
SCALE 1"= 200' APRIL, 1996
MICHAEL GUERRIERO, P.L.S.
T & M ASSOCIATES
11 TINDALL ROAD, MIDDLETOWN TOWNSHIP
NEW JERSEY, 07748
"TO SHOW CONDITIONS AS OF JULY 14, 2014"

SEE SHEET 134
SEE SHEET 134.01
SEE SHEET 178
SEE SHEET 179

SEE SHEET 137
SEE SHEET 136
SEE SHEET 138
SEE SHEET 185

SEE SHEET 179
SEE SHEET 180
SEE SHEET 182