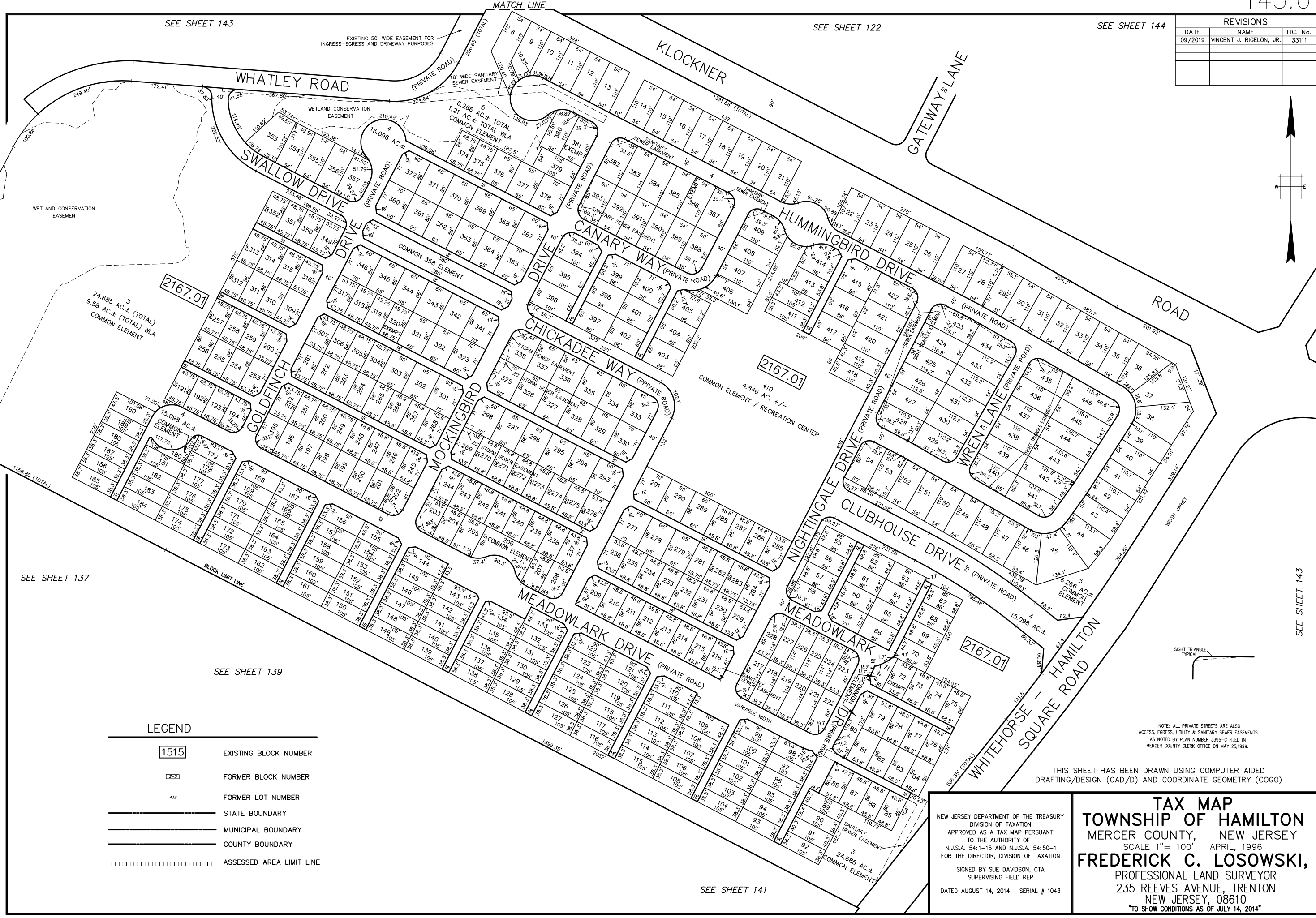
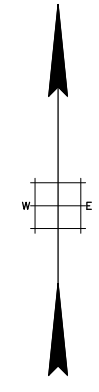


| REVISIONS | | |
|-----------|-------------------------|----------|
| DATE | NAME | LIC. No. |
| 09/2019 | VINCENT J. RIGELON, JR. | 33111 |
| | | |
| | | |

SEE SHEET 143

SEE SHEET 122

SEE SHEET 144



SEE SHEET 137

SEE SHEET 139

SEE SHEET 143

LEGEND

| | |
|-------------------------------------------------------------------|--------------------------|
| 1515 | EXISTING BLOCK NUMBER |
| 1516 | FORMER BLOCK NUMBER |
| 432 | FORMER LOT NUMBER |
| | STATE BOUNDARY |
| | MUNICIPAL BOUNDARY |
| | COUNTY BOUNDARY |
| | ASSESSED AREA LIMIT LINE |

NOTE: ALL PRIVATE STREETS ARE ALSO ACCESS, EGRESS, UTILITY & SANITARY SEWER EASEMENTS AS NOTED BY PLAN NUMBER 3395-C FILED IN MERCER COUNTY CLERK OFFICE ON MAY 25, 1999.

THIS SHEET HAS BEEN DRAWN USING COMPUTER AIDED DRAFTING/DESIGN (CAD/D) AND COORDINATE GEOMETRY (COGO)

NEW JERSEY DEPARTMENT OF THE TREASURY
 DIVISION OF TAXATION
 APPROVED AS A TAX MAP PURSUANT TO THE AUTHORITY OF N.J.S.A. 54:1-15 AND N.J.S.A. 54:50-1 FOR THE DIRECTOR, DIVISION OF TAXATION
 SIGNED BY SUE DAVIDSON, CTA SUPERVISING FIELD REP
 DATED AUGUST 14, 2014 SERIAL # 1043

TAX MAP
TOWNSHIP OF HAMILTON
 MERCER COUNTY, NEW JERSEY
 SCALE 1"= 100' APRIL, 1996
FREDERICK C. LOSOWSKI,
 PROFESSIONAL LAND SURVEYOR
 235 REEVES AVENUE, TRENTON
 NEW JERSEY, 08610
 TO SHOW CONDITIONS AS OF JULY 14, 2014

SEE SHEET 141