

REVISIONS		
DATE	NAME	LIC. No.

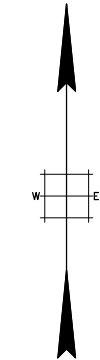
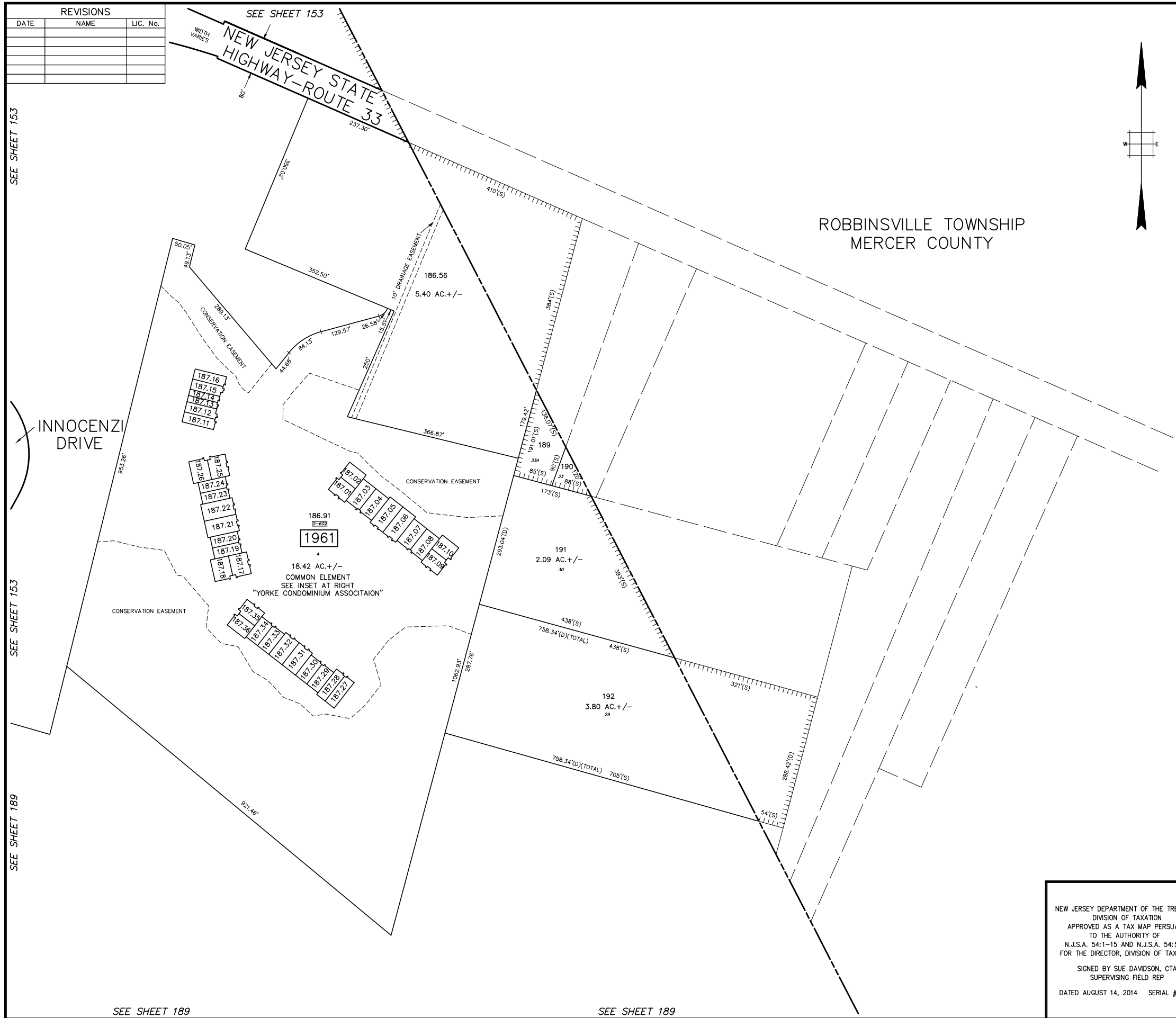
SEE SHEET 153

SEE SHEET 153

SEE SHEET 189

SEE SHEET 189

SEE SHEET 189



LEGEND	
<span style="border: 1px solid black; padding: 2px;">1515</span>	EXISTING BLOCK NUMBER
<span style="border: 1px dashed black; padding: 2px;">355</span>	FORMER BLOCK NUMBER
452	FORMER LOT NUMBER
<span style="border-bottom: 1px solid black; width: 20px; display: inline-block;"></span>	STATE BOUNDARY
<span style="border-bottom: 1px dashed black; width: 20px; display: inline-block;"></span>	MUNICIPAL BOUNDARY
<span style="border-bottom: 1px solid black; width: 20px; display: inline-block;"></span>	COUNTY BOUNDARY
<span style="border-bottom: 1px dashed black; width: 20px; display: inline-block;"></span>	ASSESSED AREA LIMIT LINE

**INSET**  
YORKE CONDOMINIUM ASSOCIATION  
BLOCK 1961 LOT 186.91

LOT	LOCATION	SUITE	SQ FT
187.01	2297 STATE HIGHWAY 33	901	1,618
187.02	2297 STATE HIGHWAY 33	902	1,603
187.03	2297 STATE HIGHWAY 33	903	2,107
187.04	2297 STATE HIGHWAY 33	904	2,107
187.05	2297 STATE HIGHWAY 33	905	2,337
187.06	2297 STATE HIGHWAY 33	906	2,337
187.07	2297 STATE HIGHWAY 33	907	2,107
187.08	2297 STATE HIGHWAY 33	908	2,107
187.09	2297 STATE HIGHWAY 33	909	1,618
187.10	2297 STATE HIGHWAY 33	910	1,603
187.11	2291 STATE HIGHWAY 33	1001	1,533
187.12	2291 STATE HIGHWAY 33	1002	1,533
187.13	2291 STATE HIGHWAY 33	1003	860
187.14	2291 STATE HIGHWAY 33	1004	860
187.15	2291 STATE HIGHWAY 33	1005	1,533
187.16	2291 STATE HIGHWAY 33	1006	1,533
187.17	2293 STATE HIGHWAY 33	1101	1,892
187.18	2293 STATE HIGHWAY 33	1102	1,907
187.19	2293 STATE HIGHWAY 33	1103	1,446
187.20	2293 STATE HIGHWAY 33	1104	1,446
187.21	2293 STATE HIGHWAY 33	1105	2,441
187.22	2293 STATE HIGHWAY 33	1106	2,441
187.23	2293 STATE HIGHWAY 33	1107	1,446
187.24	2293 STATE HIGHWAY 33	1108	1,446
187.25	2293 STATE HIGHWAY 33	1109	1,892
187.26	2293 STATE HIGHWAY 33	1110	1,907
187.27	2295 STATE HIGHWAY 33	1201	1,673
187.28	2295 STATE HIGHWAY 33	1202	1,660
187.29	2295 STATE HIGHWAY 33	1203	1,711
187.30	2295 STATE HIGHWAY 33	1204	1,711
187.31	2295 STATE HIGHWAY 33	1205	2,077
187.32	2295 STATE HIGHWAY 33	1206	2,077
187.33	2295 STATE HIGHWAY 33	1207	1,711
187.34	2295 STATE HIGHWAY 33	1208	1,711
187.35	2295 STATE HIGHWAY 33	1209	1,652
187.36	2295 STATE HIGHWAY 33	1210	1,667

NEW JERSEY DEPARTMENT OF THE TREASURY  
DIVISION OF TAXATION  
APPROVED AS A TAX MAP PURSUANT  
TO THE AUTHORITY OF  
N.J.S.A. 54:1-15 AND N.J.S.A. 54:50-1  
FOR THE DIRECTOR, DIVISION OF TAXATION

SIGNED BY SUE DAVIDSON, CTA  
SUPERVISING FIELD REP

DATED AUGUST 14, 2014 SERIAL # 1043

**TAX MAP**  
**TOWNSHIP OF HAMILTON**  
MERCER COUNTY, NEW JERSEY  
SCALE 1" = 100' APRIL, 1996  
**MICHAEL GUERRIERO, P.L.S.**  
T & M ASSOCIATES  
11 TINDALL ROAD, MIDDLETOWN TOWNSHIP  
NEW JERSEY, 07748  
\*TO SHOW CONDITIONS AS OF JULY 14, 2014\*