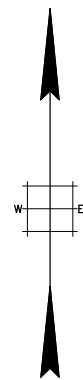


| REVISIONS | | |
|-----------|-------------------------|----------|
| DATE | NAME | LIC. No. |
| 01/2018 | VINCENT J. RIGELON, JR. | 33111 |
| | | |
| | | |
| | | |

SEE SHEET 161



SEE SHEET 161

SEE SHEET 165

SEE SHEET 161

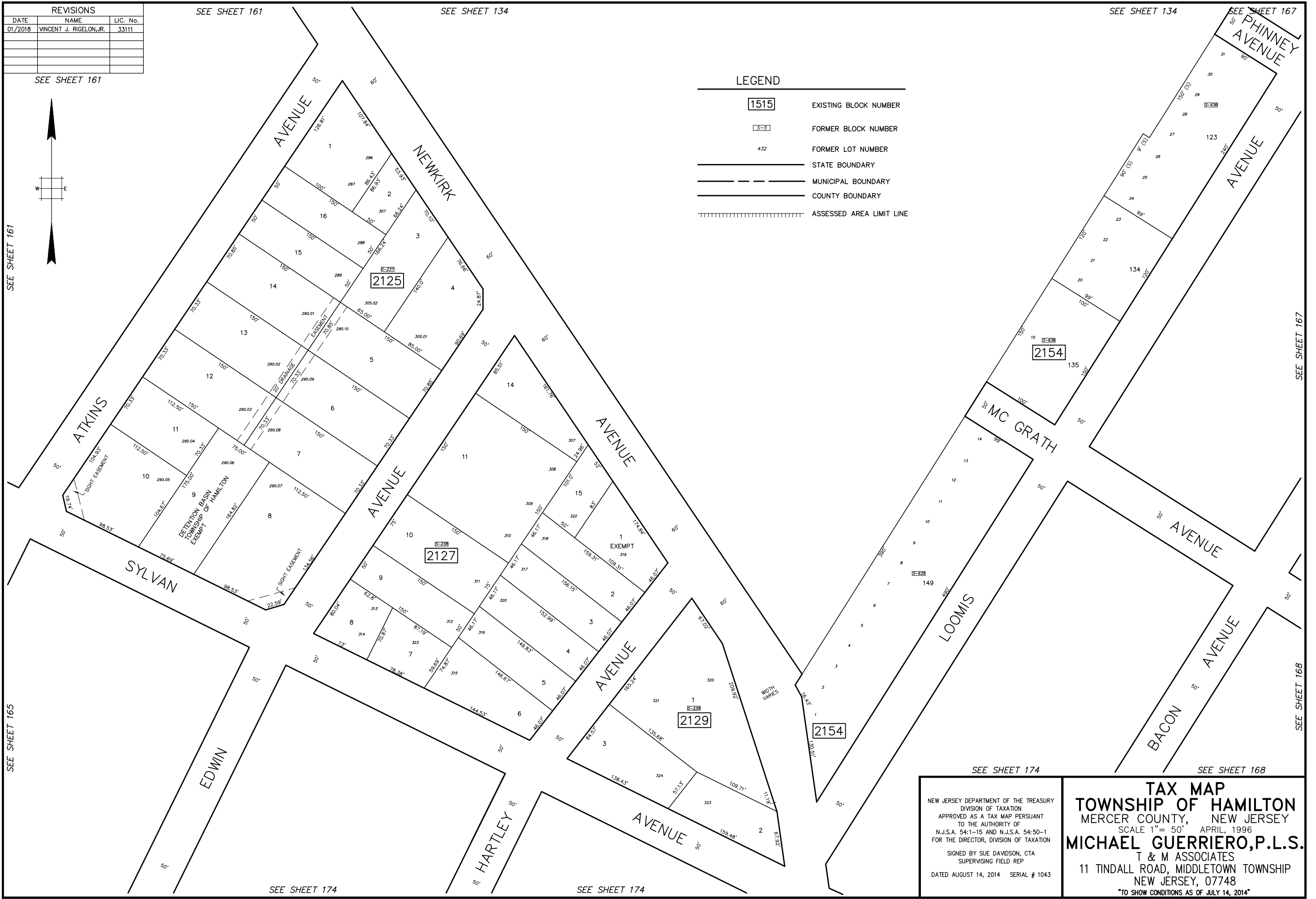
SEE SHEET 134

SEE SHEET 134

SEE SHEET 167

LEGEND

- 1515 EXISTING BLOCK NUMBER
- S-S FORMER BLOCK NUMBER
- 4.32 FORMER LOT NUMBER
- STATE BOUNDARY
- MUNICIPAL BOUNDARY
- ===== COUNTY BOUNDARY
- ||||| ASSESSED AREA LIMIT LINE



NEW JERSEY DEPARTMENT OF THE TREASURY
 DIVISION OF TAXATION
 APPROVED AS A TAX MAP PURSUANT
 TO THE AUTHORITY OF
 N.J.S.A. 54:1-15 AND N.J.S.A. 54:50-1
 FOR THE DIRECTOR, DIVISION OF TAXATION
 SIGNED BY SUE DAVIDSON, CTA
 SUPERVISING FIELD REP
 DATED AUGUST 14, 2014 SERIAL # 1043

TAX MAP
TOWNSHIP OF HAMILTON
 MERCER COUNTY, NEW JERSEY
 SCALE 1" = 50' APRIL, 1996
MICHAEL GUERRIERO, P.L.S.
 T & M ASSOCIATES
 11 TINDALL ROAD, MIDDLETOWN TOWNSHIP
 NEW JERSEY, 07748
 TO SHOW CONDITIONS AS OF JULY 14, 2014