

PLOTTED: 04/04/96

BASE INFO - DCA Relation: 0'00"00" Base Point: 0.0

REVISIONS		
DATE	NAME	LIC. No.

SEE SHEET 180

SETTER WAY

SEE SHEET 180

SEE SHEET 180

SEE SHEET 202

NORTON AVENUE

SEE SHEET 203

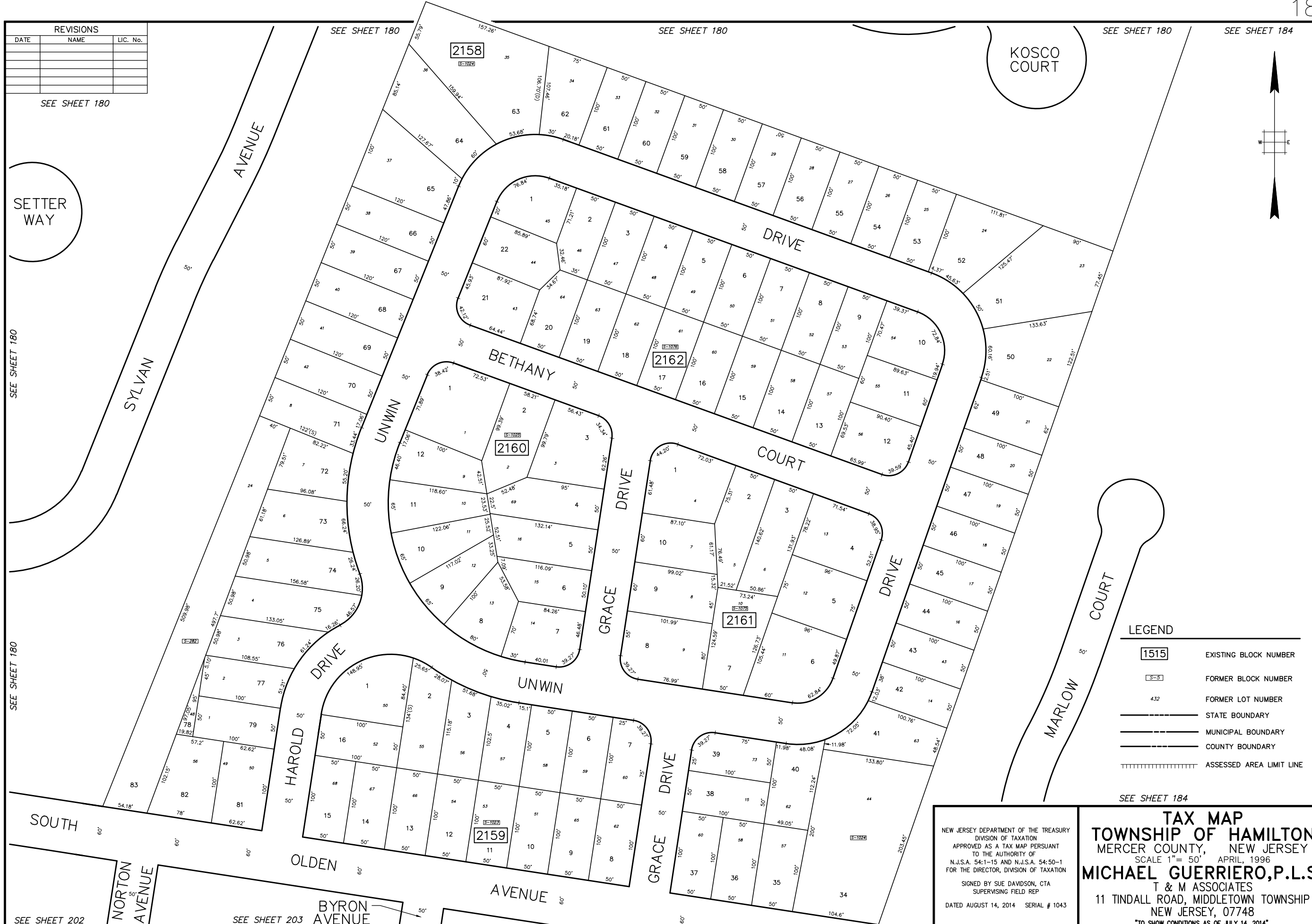
BYRON AVENUE

SEE SHEET 180

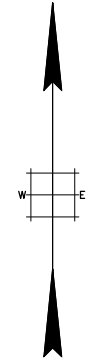
SEE SHEET 180

SEE SHEET 180

SEE SHEET 184



KOSCO COURT



SEE SHEET 184

SEE SHEET 184

LEGEND

- 1515 EXISTING BLOCK NUMBER
- S-5 FORMER BLOCK NUMBER
- 432 FORMER LOT NUMBER
- STATE BOUNDARY
- MUNICIPAL BOUNDARY
- COUNTY BOUNDARY
- ||||||| ASSESSED AREA LIMIT LINE

SEE SHEET 184

NEW JERSEY DEPARTMENT OF THE TREASURY
 DIVISION OF TAXATION
 APPROVED AS A TAX MAP PURSUANT
 TO THE AUTHORITY OF
 N.J.S.A. 54:1-15 AND N.J.S.A. 54:50-1
 FOR THE DIRECTOR, DIVISION OF TAXATION

SIGNED BY SUE DAVIDSON, CTA
 SUPERVISING FIELD REP

DATED AUGUST 14, 2014 SERIAL # 1043

TAX MAP
TOWNSHIP OF HAMILTON
 MERCER COUNTY, NEW JERSEY
 SCALE 1" = 50' APRIL, 1996
MICHAEL GUERRIERO, P.L.S.
 T & M ASSOCIATES
 11 TINDALL ROAD, MIDDLETOWN TOWNSHIP
 NEW JERSEY, 07748
 TO SHOW CONDITIONS AS OF JULY 14, 2014