

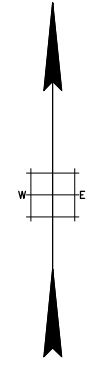
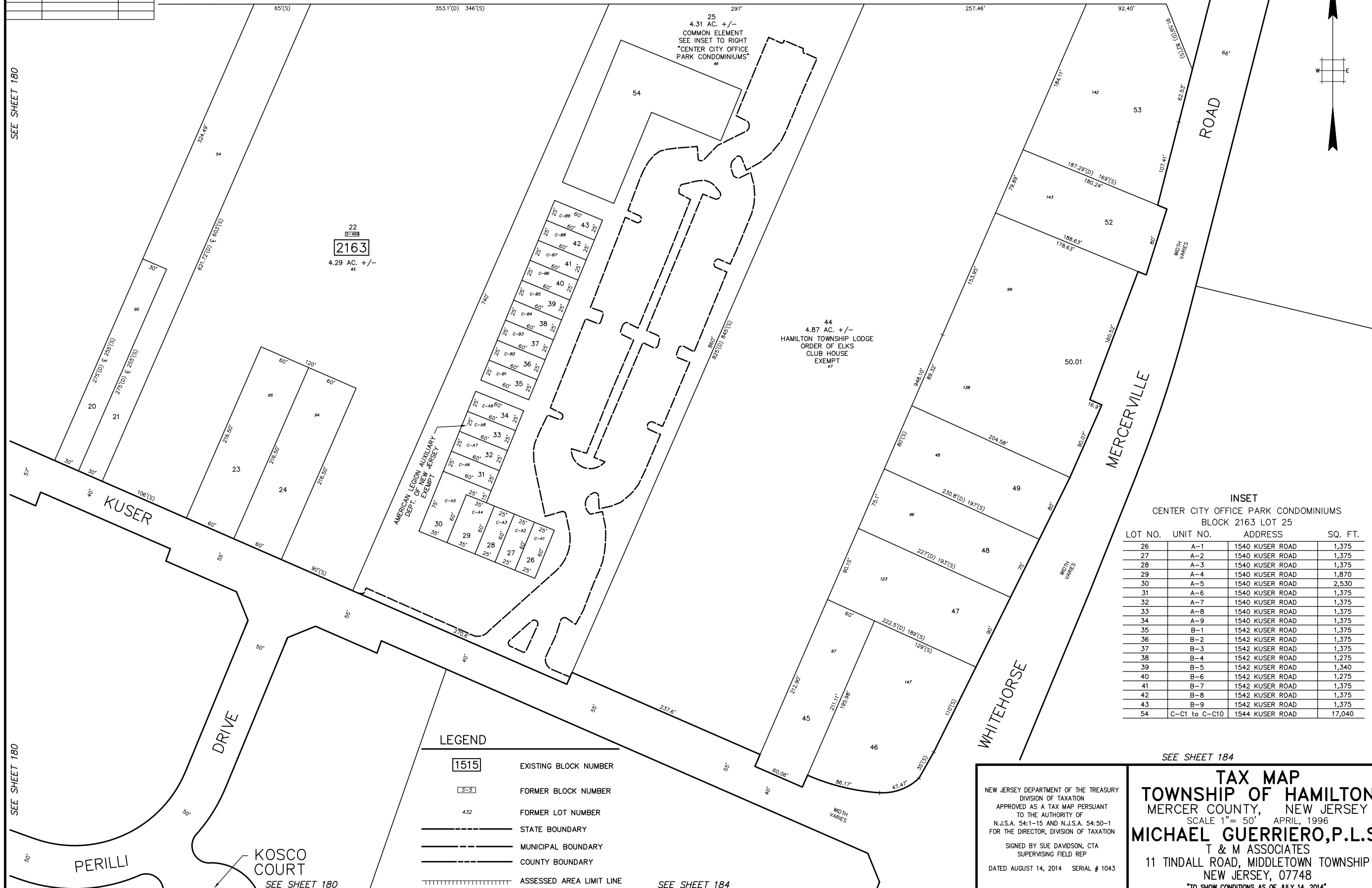
PLOTTED: 04/04/96

BASE INFO - DCA Relation: 0'00"00" Base Point: 0.0

REVISIONS		
DATE	NAME	LIC. No.

SEE SHEET 135

SEE SHEET 135



SEE SHEET 183

SEE SHEET 184

22  
 2163  
 4.29 AC. +/-  
 45

25  
 4.31 AC. +/-  
 COMMON ELEMENT  
 SEE INSET TO RIGHT  
 "CENTER CITY OFFICE  
 PARK CONDOMINIUMS"  
 46

44  
 4.87 AC. +/-  
 HAMILTON TOWNSHIP LODGE  
 ORDER OF ELKS  
 CLUB HOUSE  
 EXEMPT  
 47

AMERICAN LEGION AUXILIARY  
 DEPT. OF NEW JERSEY  
 EXEMPT

**INSET**  
 CENTER CITY OFFICE PARK CONDOMINIUMS  
 BLOCK 2163 LOT 25

LOT NO.	UNIT NO.	ADDRESS	SQ. FT.
26	A-1	1540 KUSER ROAD	1,375
27	A-2	1540 KUSER ROAD	1,375
28	A-3	1540 KUSER ROAD	1,375
29	A-4	1540 KUSER ROAD	1,870
30	A-5	1540 KUSER ROAD	2,530
31	A-6	1540 KUSER ROAD	1,375
32	A-7	1540 KUSER ROAD	1,375
33	A-8	1540 KUSER ROAD	1,375
34	A-9	1540 KUSER ROAD	1,375
35	B-1	1542 KUSER ROAD	1,375
36	B-2	1542 KUSER ROAD	1,375
37	B-3	1542 KUSER ROAD	1,375
38	B-4	1542 KUSER ROAD	1,275
39	B-5	1542 KUSER ROAD	1,340
40	B-6	1542 KUSER ROAD	1,275
41	B-7	1542 KUSER ROAD	1,375
42	B-8	1542 KUSER ROAD	1,375
43	B-9	1542 KUSER ROAD	1,375
54	C-C1 to C-C10	1544 KUSER ROAD	17,040

**LEGEND**

- 1515 EXISTING BLOCK NUMBER
- S-5 FORMER BLOCK NUMBER
- 432 FORMER LOT NUMBER
- STATE BOUNDARY
- MUNICIPAL BOUNDARY
- COUNTY BOUNDARY
- ||||| ASSESSED AREA LIMIT LINE

NEW JERSEY DEPARTMENT OF THE TREASURY  
 DIVISION OF TAXATION  
 APPROVED AS A TAX MAP PURSUANT  
 TO THE AUTHORITY OF  
 N.J.S.A. 54:1-15 AND N.J.S.A. 54:50-1  
 FOR THE DIRECTOR, DIVISION OF TAXATION  
 SIGNED BY SUE DAVIDSON, CTA  
 SUPERVISING FIELD REP  
 DATED AUGUST 14, 2014 SERIAL # 1043

**TAX MAP**  
**TOWNSHIP OF HAMILTON**  
 MERCER COUNTY, NEW JERSEY  
 SCALE 1" = 50' APRIL, 1996  
**MICHAEL GUERRIERO, P.L.S.**  
 T & M ASSOCIATES  
 11 TINDALL ROAD, MIDDLETOWN TOWNSHIP  
 NEW JERSEY, 07748  
 \*TO SHOW CONDITIONS AS OF JULY 14, 2014\*