

PLOTTED: 03/27/96

BASE INFO - DCA Relation: 0'00"00" Base Point: 0.0

REVISIONS		
DATE	NAME	LIC. No.
04/2019	VINCENT J. RIGELON, JR.	33111

SEE SHEET 173

SEE SHEET 173

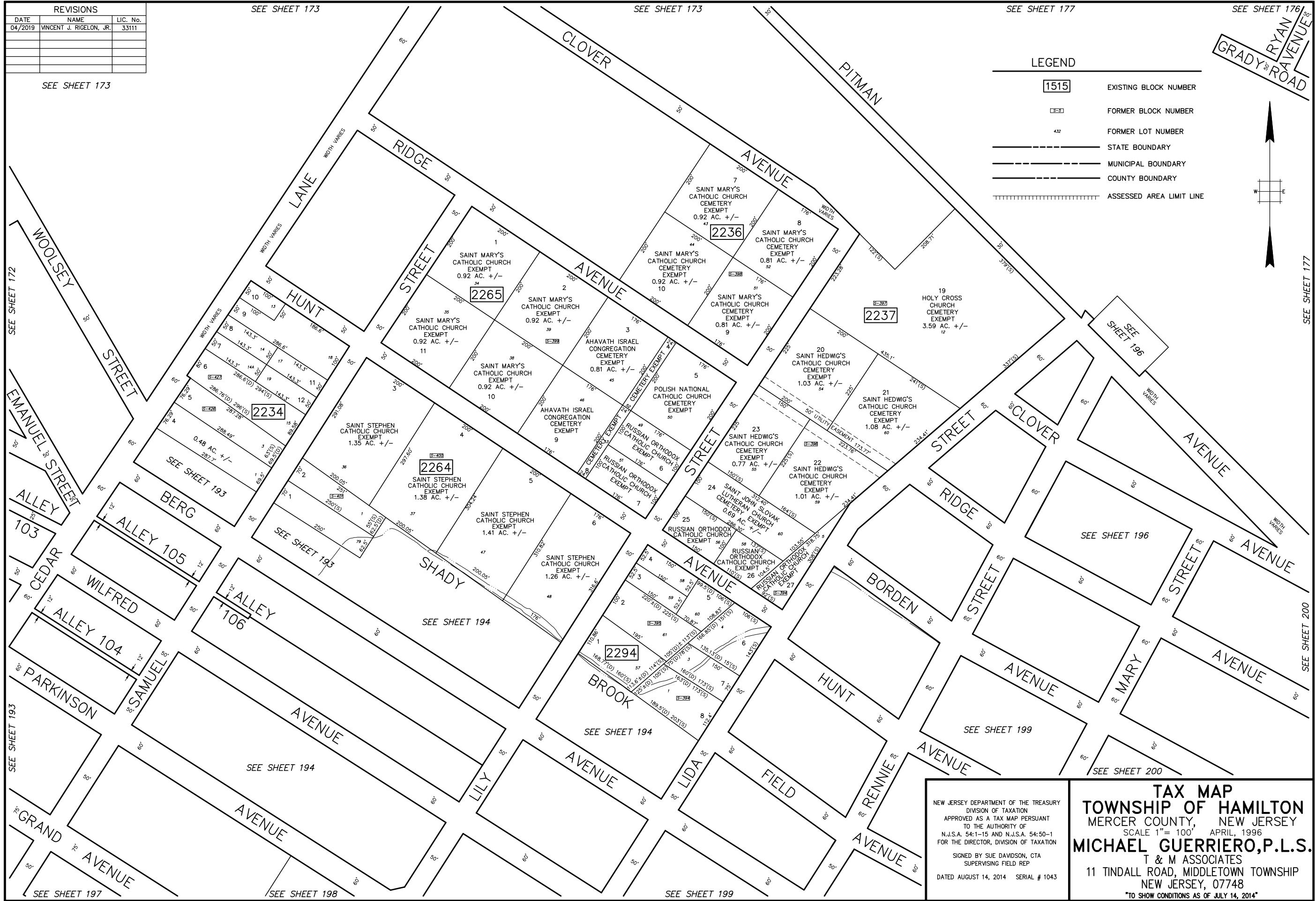
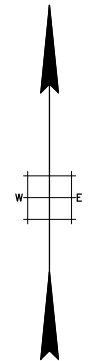
SEE SHEET 173

SEE SHEET 177

SEE SHEET 176

**LEGEND**

- 1515 EXISTING BLOCK NUMBER
- 3-3 FORMER BLOCK NUMBER
- 432 FORMER LOT NUMBER
- STATE BOUNDARY
- MUNICIPAL BOUNDARY
- COUNTY BOUNDARY
- ||||| ASSESSED AREA LIMIT LINE



<p>NEW JERSEY DEPARTMENT OF THE TREASURY DIVISION OF TAXATION APPROVED AS A TAX MAP PURSUANT TO THE AUTHORITY OF N.J.S.A. 54:1-15 AND N.J.S.A. 54:50-1 FOR THE DIRECTOR, DIVISION OF TAXATION</p> <p>SIGNED BY SUE DAVIDSON, CTA SUPERVISING FIELD REP</p> <p>DATED AUGUST 14, 2014 SERIAL # 1043</p>	<p><b>TAX MAP</b> <b>TOWNSHIP OF HAMILTON</b> MERCER COUNTY, NEW JERSEY SCALE 1" = 100' APRIL, 1996 <b>MICHAEL GUERRIERO, P.L.S.</b> T &amp; M ASSOCIATES 11 TINDALL ROAD, MIDDLETOWN TOWNSHIP NEW JERSEY, 07748 *TO SHOW CONDITIONS AS OF JULY 14, 2014*</p>
---	---