

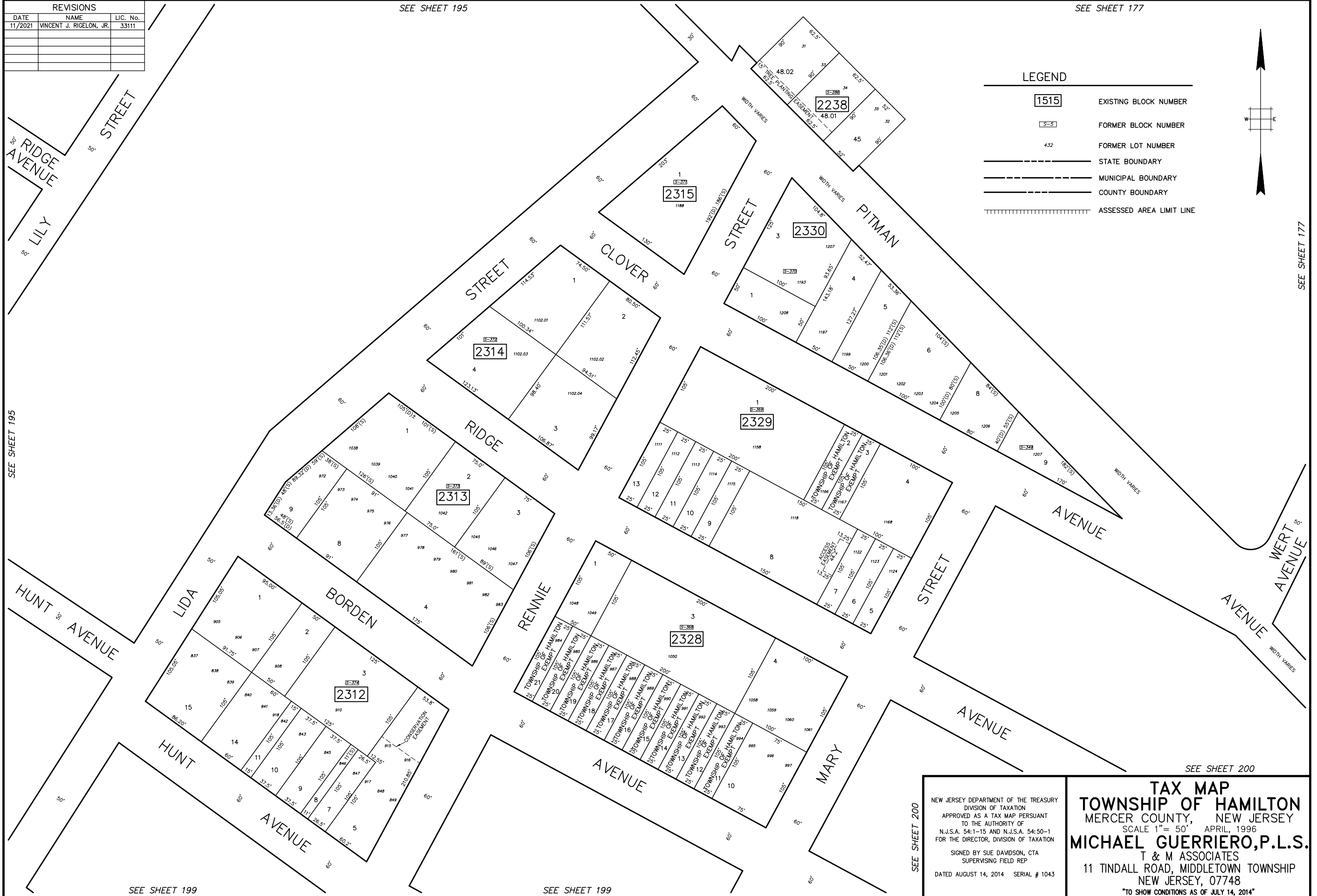
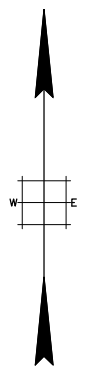
REVISIONS		
DATE	NAME	LIC. No.
11/2021	VINCENT J. RIGELON, JR.	33111

SEE SHEET 195

SEE SHEET 177

**LEGEND**

- 1515 EXISTING BLOCK NUMBER
- 5-3 FORMER BLOCK NUMBER
- 432 FORMER LOT NUMBER
- STATE BOUNDARY
- MUNICIPAL BOUNDARY
- COUNTY BOUNDARY
- ||||| ASSESSED AREA LIMIT LINE



SEE SHEET 195

SEE SHEET 177

SEE SHEET 199

SEE SHEET 199

SEE SHEET 200

NEW JERSEY DEPARTMENT OF THE TREASURY  
 DIVISION OF TAXATION  
 APPROVED AS A TAX MAP PURSUANT  
 TO THE AUTHORITY OF  
 N.J.S.A. 54:1-15 AND N.J.S.A. 54:50-1  
 FOR THE DIRECTOR, DIVISION OF TAXATION

SIGNED BY SUE DAVDSON, CTA  
 SUPERVISING FIELD REP

DATED AUGUST 14, 2014 SERIAL # 1043

**TAX MAP**  
**TOWNSHIP OF HAMILTON**  
 MERCER COUNTY, NEW JERSEY  
 SCALE 1" = 50' APRIL, 1996  
**MICHAEL GUERRIERO, P.L.S.**  
 T & M ASSOCIATES  
 11 TINDALL ROAD, MIDDLETOWN TOWNSHIP  
 NEW JERSEY, 07748  
 \*TO SHOW CONDITIONS AS OF JULY 14, 2014\*