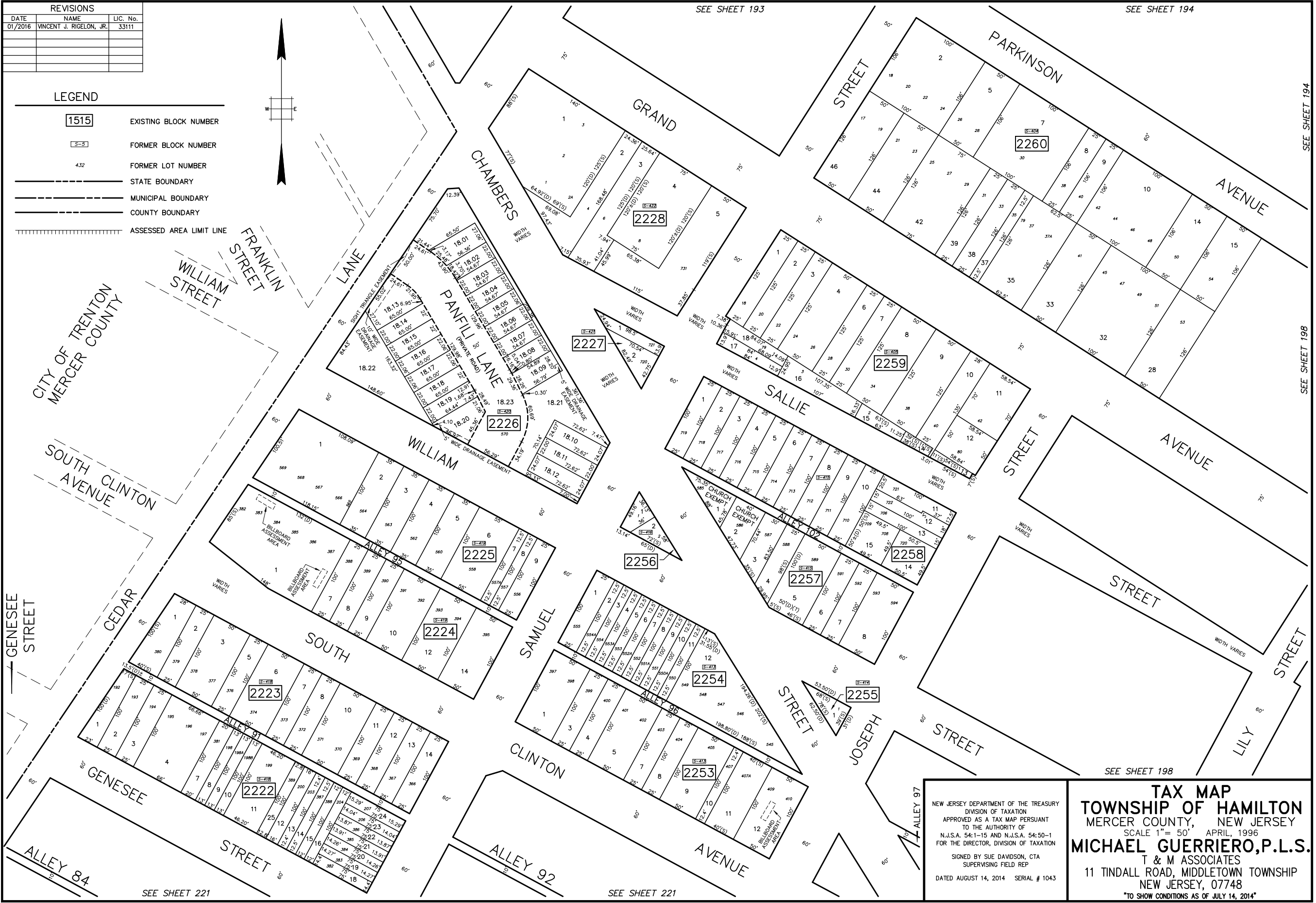
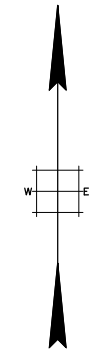


REVISIONS		
DATE	NAME	LIC. No.
01/2016	VINCENT J. RIGELON, JR.	33111

LEGEND	
1515	EXISTING BLOCK NUMBER
3-3	FORMER BLOCK NUMBER
432	FORMER LOT NUMBER
---	STATE BOUNDARY
- - - -	MUNICIPAL BOUNDARY
----	COUNTY BOUNDARY
=====	ASSESSED AREA LIMIT LINE



G:\TAXMAPS\197.dwg, 10/19/2016 10:30:38 AM, jfratticcioli, 1:113.71

SEE SHEET 221

SEE SHEET 221

SEE SHEET 193

SEE SHEET 194

SEE SHEET 194

SEE SHEET 198

SEE SHEET 198

NEW JERSEY DEPARTMENT OF THE TREASURY
 DIVISION OF TAXATION
 APPROVED AS A TAX MAP PURSUANT
 TO THE AUTHORITY OF
 N.J.S.A. 54:1-15 AND N.J.S.A. 54:50-1
 FOR THE DIRECTOR, DIVISION OF TAXATION
 SIGNED BY SUE DAVIDSON, CTA
 SUPERVISING FIELD REP
 DATED AUGUST 14, 2014 SERIAL # 1043

TAX MAP
TOWNSHIP OF HAMILTON
 MERCER COUNTY, NEW JERSEY
 SCALE 1" = 50' APRIL, 1996
MICHAEL GUERRIERO, P.L.S.
 T & M ASSOCIATES
 11 TINDALL ROAD, MIDDLETOWN TOWNSHIP
 NEW JERSEY, 07748
 TO SHOW CONDITIONS AS OF JULY 14, 2014