

| REVISIONS |                         |          |
|-----------|-------------------------|----------|
| DATE      | NAME                    | LIC. No. |
| 04/2020   | VINCENT J. RIGELON, JR. | 33111    |
|           |                         |          |
|           |                         |          |
|           |                         |          |

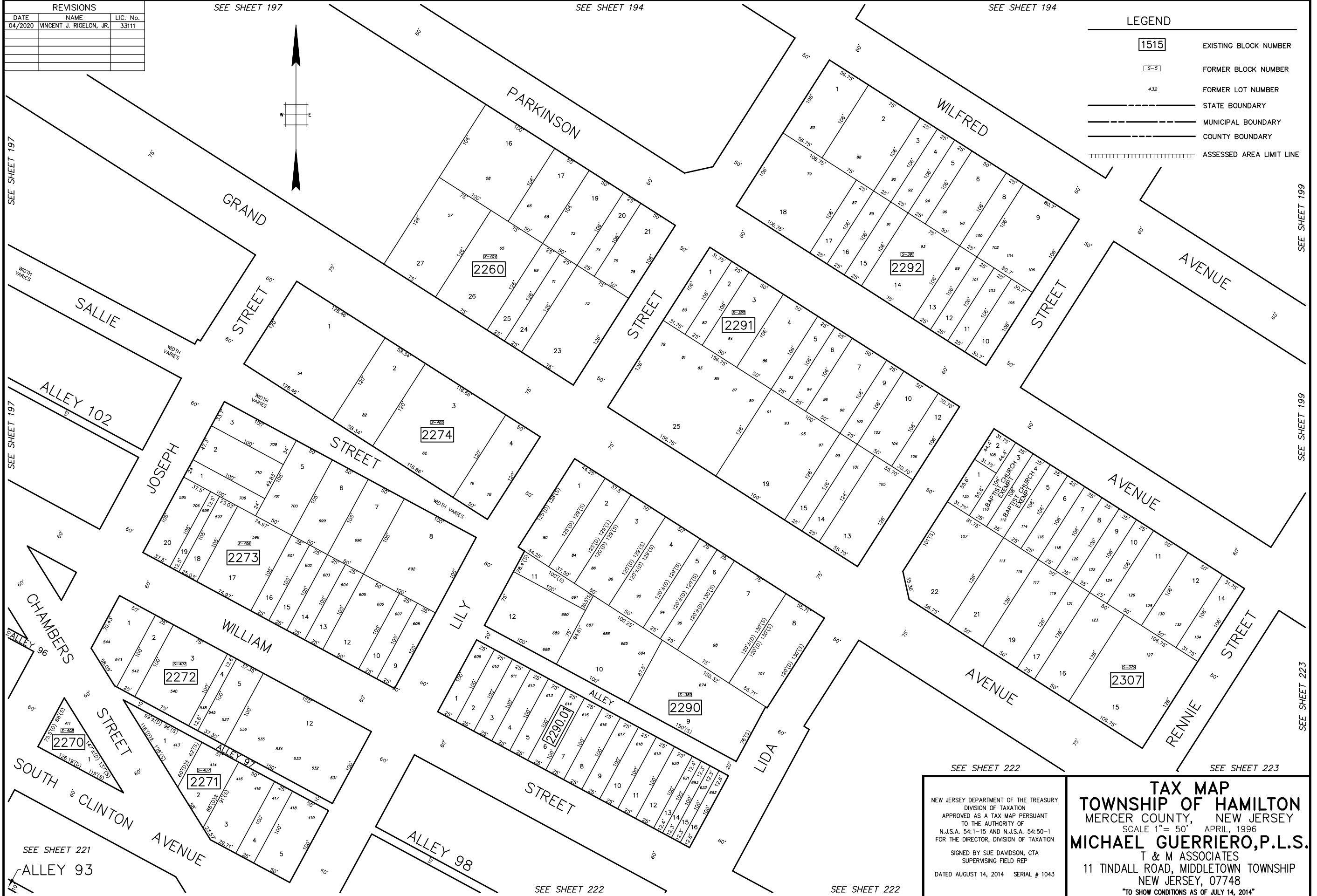
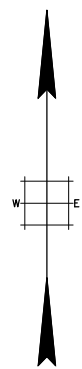
SEE SHEET 197

SEE SHEET 194

SEE SHEET 194

LEGEND

- 1515 EXISTING BLOCK NUMBER
- S-5 FORMER BLOCK NUMBER
- 432 FORMER LOT NUMBER
- STATE BOUNDARY
- MUNICIPAL BOUNDARY
- COUNTY BOUNDARY
- ||||| ASSESSED AREA LIMIT LINE



SEE SHEET 197

SEE SHEET 197

SEE SHEET 197

SEE SHEET 221

SEE SHEET 221

SEE SHEET 199

SEE SHEET 199

SEE SHEET 223

SEE SHEET 222

SEE SHEET 223

SEE SHEET 222

SEE SHEET 222

NEW JERSEY DEPARTMENT OF THE TREASURY  
 DIVISION OF TAXATION  
 APPROVED AS A TAX MAP PURSUANT  
 TO THE AUTHORITY OF  
 N.J.S.A. 54:1-15 AND N.J.S.A. 54:50-1  
 FOR THE DIRECTOR, DIVISION OF TAXATION  
 SIGNED BY SUE DAVDSON, CTA  
 SUPERVISING FIELD REP  
 DATED AUGUST 14, 2014 SERIAL # 1043

**TAX MAP**  
**TOWNSHIP OF HAMILTON**  
 MERCER COUNTY, NEW JERSEY  
 SCALE 1" = 50' APRIL, 1996  
**MICHAEL GUERRIERO, P.L.S.**  
 T & M ASSOCIATES  
 11 TINDALL ROAD, MIDDLETOWN TOWNSHIP  
 NEW JERSEY, 07748  
 \*TO SHOW CONDITIONS AS OF JULY 14, 2014\*