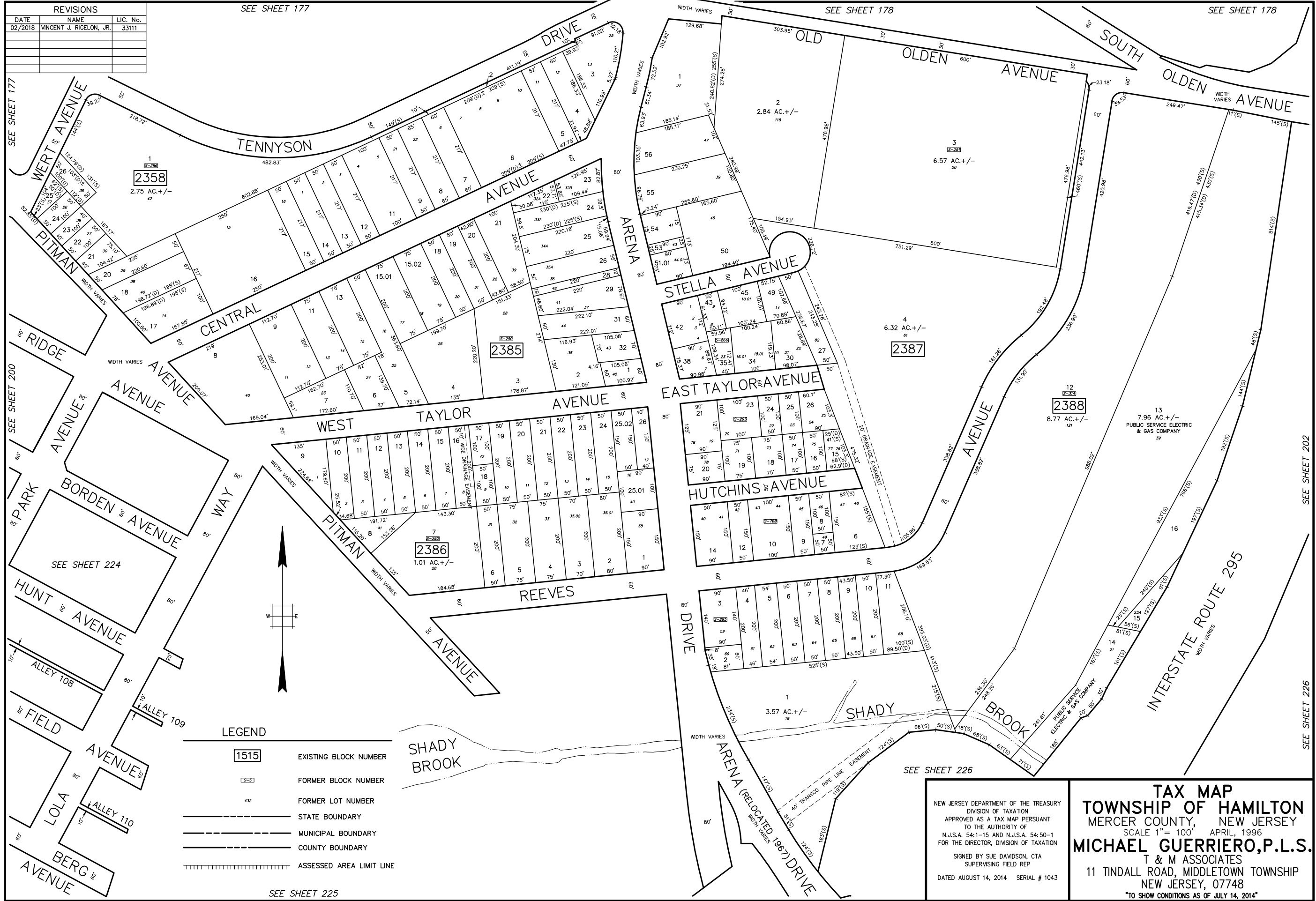


REVISIONS		
DATE	NAME	LIC. No.
02/2018	VINCENT J. RIGELON, JR.	33111



SEE SHEET 177

SEE SHEET 178

SEE SHEET 178

SEE SHEET 200

SEE SHEET 224

SEE SHEET 225

SEE SHEET 226

SEE SHEET 226

- LEGEND**
- 1515 EXISTING BLOCK NUMBER
 - 2358 FORMER BLOCK NUMBER
 - 432 FORMER LOT NUMBER
 - STATE BOUNDARY
 - MUNICIPAL BOUNDARY
 - COUNTY BOUNDARY
 - ASSESSED AREA LIMIT LINE

<p>NEW JERSEY DEPARTMENT OF THE TREASURY DIVISION OF TAXATION APPROVED AS A TAX MAP PURSUANT TO THE AUTHORITY OF N.J.S.A. 54:1-15 AND N.J.S.A. 54:50-1 FOR THE DIRECTOR, DIVISION OF TAXATION</p> <p>SIGNED BY SUE DAVIDSON, CTA SUPERVISING FIELD REP</p> <p>DATED AUGUST 14, 2014 SERIAL # 1043</p>	<p>TAX MAP TOWNSHIP OF HAMILTON MERCER COUNTY, NEW JERSEY SCALE 1" = 100' APRIL, 1996 MICHAEL GUERRIERO, P.L.S. T & M ASSOCIATES 11 TINDALL ROAD, MIDDLETOWN TOWNSHIP NEW JERSEY, 07748 <small>"TO SHOW CONDITIONS AS OF JULY 14, 2014"</small></p>
---	--