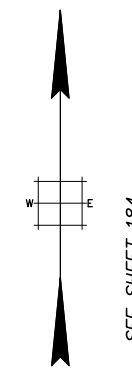
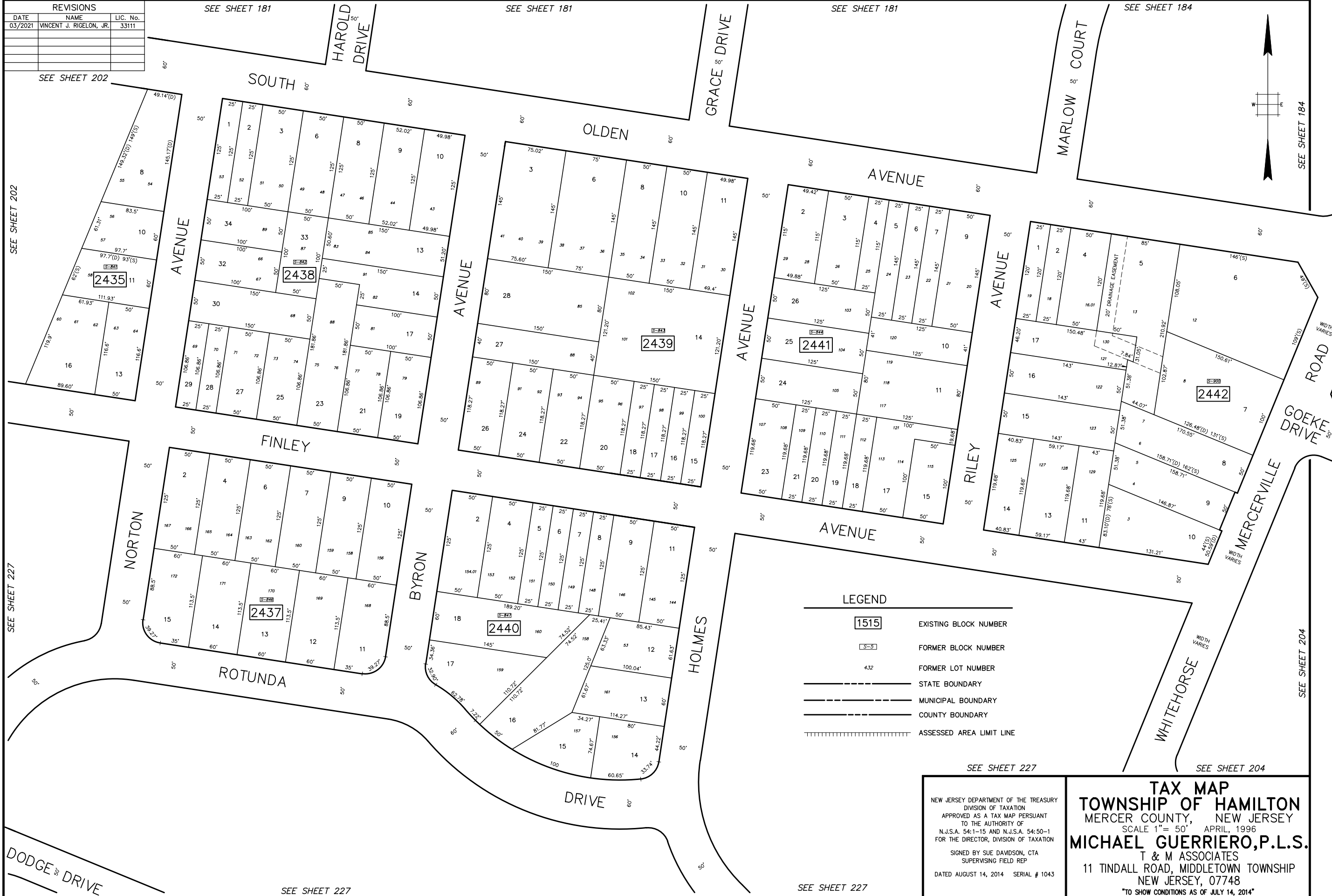


| REVISIONS |                         |          |
|-----------|-------------------------|----------|
| DATE      | NAME                    | LIC. No. |
| 03/2021   | VINCENT J. RIGELON, JR. | 33111    |
|           |                         |          |
|           |                         |          |
|           |                         |          |



SEE SHEET 202

SEE SHEET 181

SEE SHEET 181

SEE SHEET 181

SEE SHEET 184

SEE SHEET 202

SEE SHEET 227

SEE SHEET 184

SEE SHEET 204

**LEGEND**

|  |                          |
|--|--------------------------|
| <span style="border: 1px solid black; padding: 2px;">1515</span> | EXISTING BLOCK NUMBER    |
| <span style="border: 1px dashed black; padding: 2px;">S-3</span> | FORMER BLOCK NUMBER      |
| 4.32   | FORMER LOT NUMBER        |
| ---  | STATE BOUNDARY           |
| ---  | MUNICIPAL BOUNDARY       |
| ---  | COUNTY BOUNDARY          |
|  | ASSESSED AREA LIMIT LINE |

SEE SHEET 227

SEE SHEET 204

NEW JERSEY DEPARTMENT OF THE TREASURY  
 DIVISION OF TAXATION  
 APPROVED AS A TAX MAP PURSUANT  
 TO THE AUTHORITY OF  
 N.J.S.A. 54:1-15 AND N.J.S.A. 54:50-1  
 FOR THE DIRECTOR, DIVISION OF TAXATION

SIGNED BY SUE DAWDSON, CTA  
 SUPERVISING FIELD REP

DATED AUGUST 14, 2014 SERIAL # 1043

**TAX MAP**  
**TOWNSHIP OF HAMILTON**  
 MERCER COUNTY, NEW JERSEY  
 SCALE 1" = 50' APRIL, 1996  
**MICHAEL GUERRIERO, P.L.S.**  
 T & M ASSOCIATES  
 11 TINDALL ROAD, MIDDLETOWN TOWNSHIP  
 NEW JERSEY, 07748  
 \*TO SHOW CONDITIONS AS OF JULY 14, 2014\*

DODGE DRIVE

SEE SHEET 227

SEE SHEET 227