

REVISIONS		
DATE	NAME	LIC. No.
02/2020	VINCENT J. RIGELON, JR.	33111

SEE SHEET 186

SEE SHEET 190

SEE SHEET 190

SEE SHEET 214

HAMILTON CLOCKTOWER CORPORATE CENTER CONDOMINIUM  
BLOCK 2173, LOT 17.01

LOT NO.	UNIT NO.	ADDRESS	SQ. FT.
17.06	400	2500 KUSER RD.	87,120
17.03	300	300 CLOCKTOWER DR.	24,100
17.04	200	200 CLOCKTOWER DR.	29,700
17.05	100	100 CLOCKTOWER DR.	32,400

SEE SHEET 210

CAMBRIA COURT

SEE SHEET 210

ALBERT DRIVE

BRIARWOOD DRIVE

BONACCI DRIVE

GATES MILL COURT

SEE SHEET 212

YARDVILLE

HAMILTON

SQUARE

ROAD

80'

WIDTH VARIES

SEE SHEET 210

SEE SHEET 210

SEE SHEET 210

SEE SHEET 210

SEE SHEET 210

SEE SHEET 210

SEE SHEET 210

SEE SHEET 210

SEE SHEET 210

SEE SHEET 210

SEE SHEET 213.01

LOWER POND COURT  
(PRIVATE ROAD)

POND RUN TERRACE  
(PRIVATE ROAD)

UPPER POND COURT  
(PRIVATE ROAD)

TWIN PONDS BLVD. (PRIVATE ROAD)

CLOCKTOWER

PRIVATE ROAD

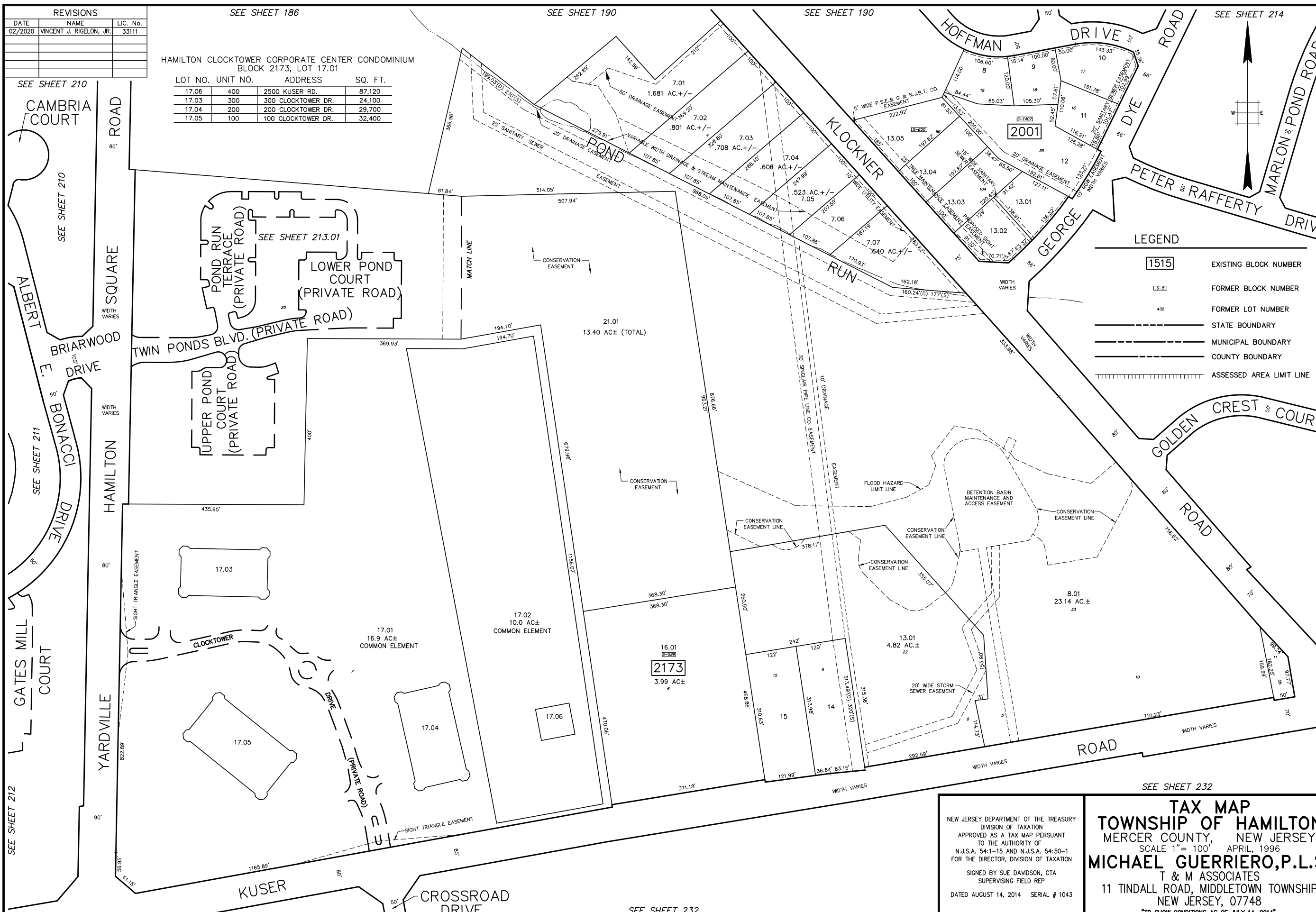
KUSER

CROSSROAD DRIVE

SEE SHEET 232

**LEGEND**

- 1515 EXISTING BLOCK NUMBER
- 1523 FORMER BLOCK NUMBER
- 452 FORMER LOT NUMBER
- STATE BOUNDARY
- MUNICIPAL BOUNDARY
- COUNTY BOUNDARY
- ASSESSED AREA LIMIT LINE



NEW JERSEY DEPARTMENT OF THE TREASURY  
DIVISION OF TAXATION  
APPROVED AS A TAX MAP PURSUANT  
TO THE AUTHORITY OF  
N.J.S.A. 54:1-15 AND N.J.S.A. 54:50-1  
FOR THE DIRECTOR, DIVISION OF TAXATION

SIGNED BY SUE DAVDSON, CTA  
SUPERVISING FIELD REP

DATED AUGUST 14, 2014 SERIAL # 1043

**TAX MAP  
TOWNSHIP OF HAMILTON  
MERCER COUNTY, NEW JERSEY**  
SCALE 1"= 100' APRIL, 1996

**MICHAEL GUERRIERO, P.L.S.**  
T & M ASSOCIATES  
11 TINDALL ROAD, MIDDLETOWN TOWNSHIP  
NEW JERSEY, 07748  
"TO SHOW CONDITIONS AS OF JULY 14, 2014"