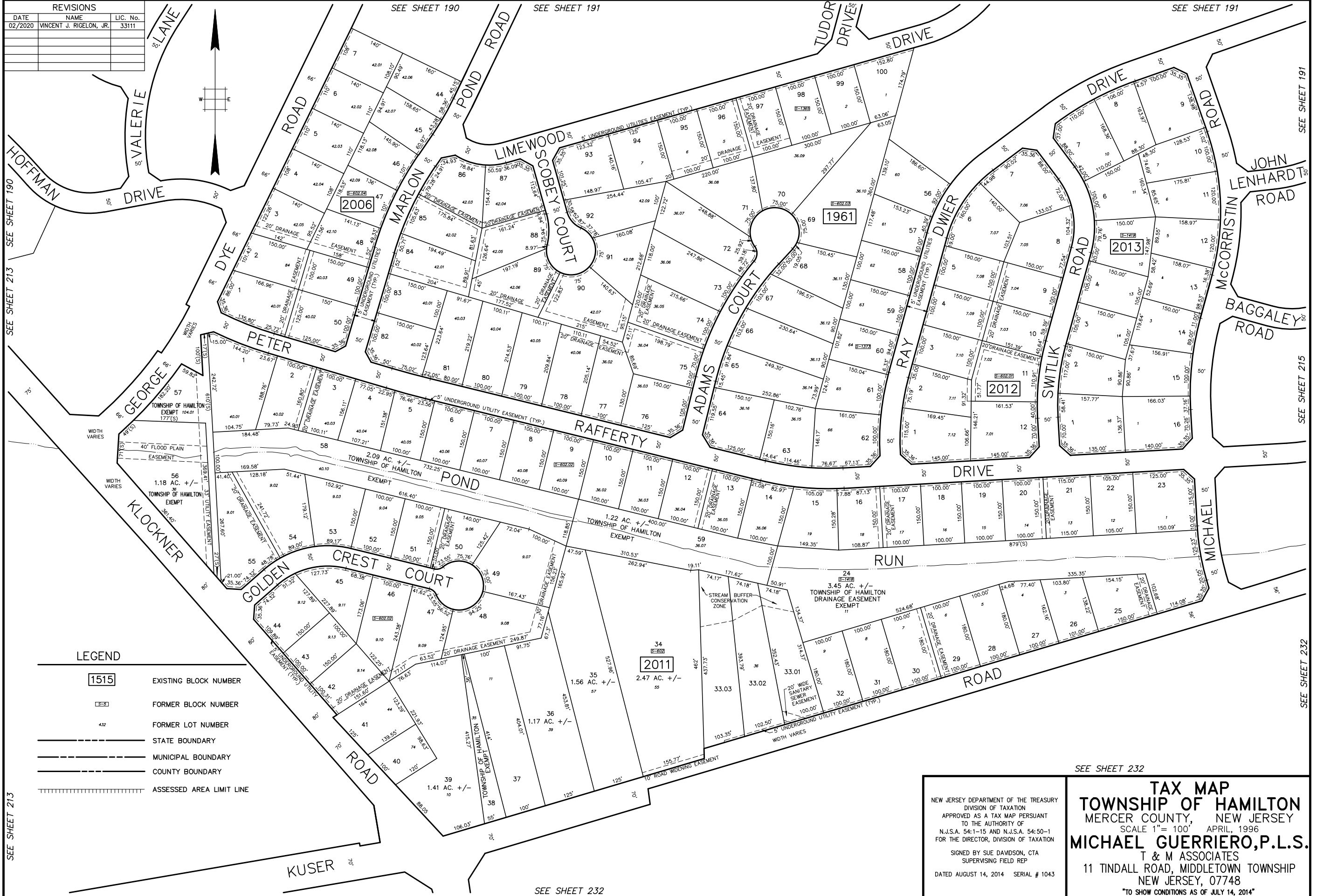


REVISIONS		
DATE	NAME	LIC. No.
02/2020	VINCENT J. RIGELON, JR.	33111



SEE SHEET 213

SEE SHEET 215

LEGEND

1515	EXISTING BLOCK NUMBER
52	FORMER BLOCK NUMBER
432	FORMER LOT NUMBER
---	STATE BOUNDARY
---	MUNICIPAL BOUNDARY
---	COUNTY BOUNDARY
	ASSESSED AREA LIMIT LINE

NEW JERSEY DEPARTMENT OF THE TREASURY
 DIVISION OF TAXATION
 APPROVED AS A TAX MAP PURSUANT
 TO THE AUTHORITY OF
 N.J.S.A. 54:1-15 AND N.J.S.A. 54:50-1
 FOR THE DIRECTOR, DIVISION OF TAXATION
 SIGNED BY SUE DAWSON, CTA
 SUPERVISING FIELD REP
 DATED AUGUST 14, 2014 SERIAL # 1043

TAX MAP
TOWNSHIP OF HAMILTON
 MERCER COUNTY, NEW JERSEY
 SCALE 1" = 100' APRIL, 1996
MICHAEL GUERRIERO, P.L.S.
 T & M ASSOCIATES
 11 TINDALL ROAD, MIDDLETOWN TOWNSHIP
 NEW JERSEY, 07748
 TO SHOW CONDITIONS AS OF JULY 14, 2014