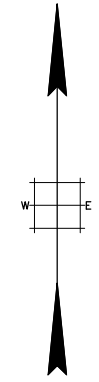
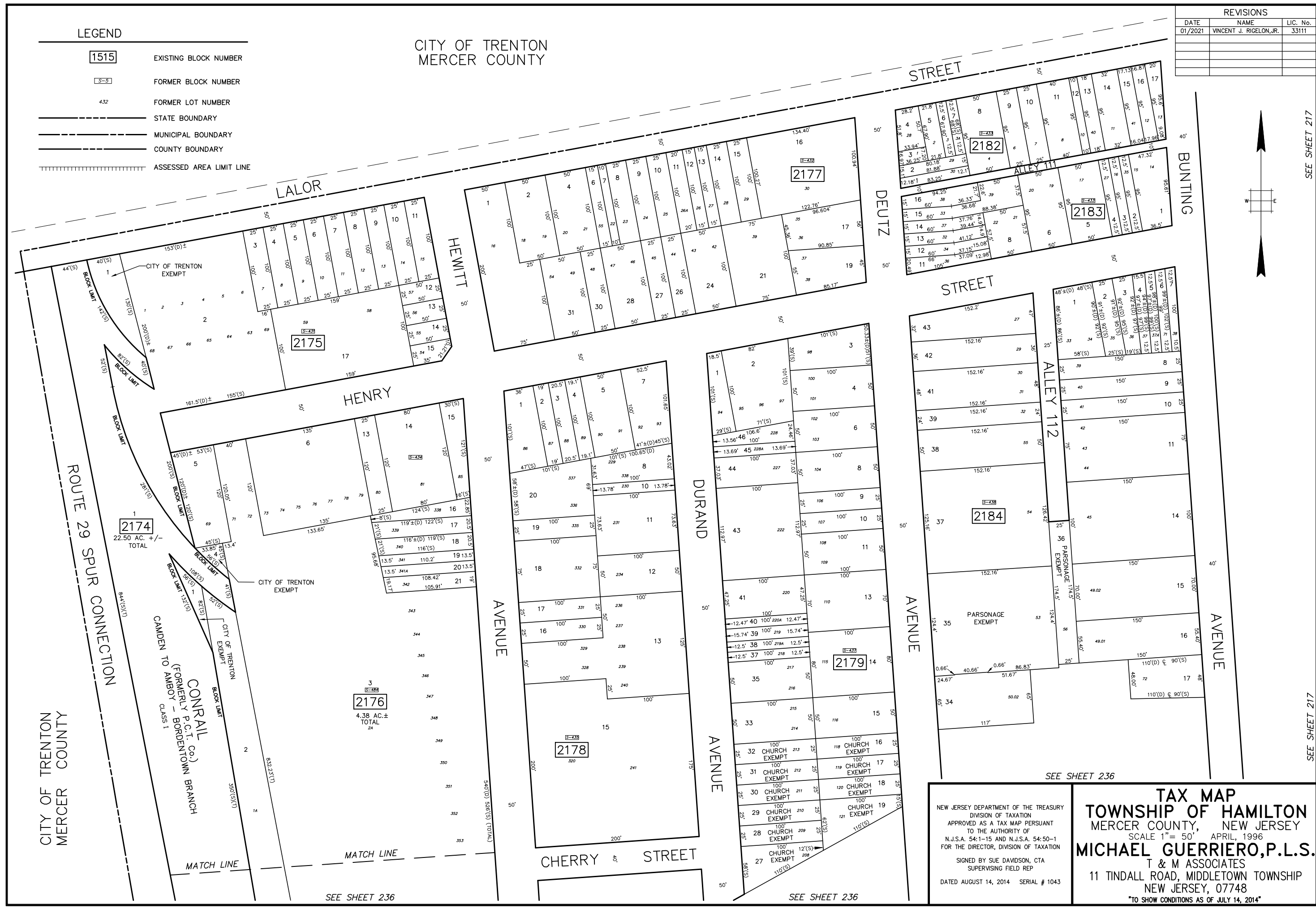


REVISIONS		
DATE	NAME	LIC. No.
01/2021	VINCENT J. RIGELON, JR.	33111

**LEGEND**

<span style="border: 1px solid black; padding: 2px;">1515</span>	EXISTING BLOCK NUMBER
<span style="border: 1px dashed black; padding: 2px;">S-5</span>	FORMER BLOCK NUMBER
432	FORMER LOT NUMBER
	STATE BOUNDARY
	MUNICIPAL BOUNDARY
	COUNTY BOUNDARY
	ASSESSED AREA LIMIT LINE

CITY OF TRENTON  
MERCER COUNTY



SEE SHEET 217

SEE SHEET 217

NEW JERSEY DEPARTMENT OF THE TREASURY  
DIVISION OF TAXATION  
APPROVED AS A TAX MAP PURSUANT  
TO THE AUTHORITY OF  
N.J.S.A. 54:1-15 AND N.J.S.A. 54:50-1  
FOR THE DIRECTOR, DIVISION OF TAXATION  
SIGNED BY SUE DAVIDSON, CTA  
SUPERVISING FIELD REP  
DATED AUGUST 14, 2014 SERIAL # 1043

**TAX MAP**  
**TOWNSHIP OF HAMILTON**  
MERCER COUNTY, NEW JERSEY  
SCALE 1"= 50'  
APRIL, 1996  
**MICHAEL GUERRIERO, P.L.S.**  
T & M ASSOCIATES  
11 TINDALL ROAD, MIDDLETOWN TOWNSHIP  
NEW JERSEY, 07748  
\*TO SHOW CONDITIONS AS OF JULY 14, 2014\*