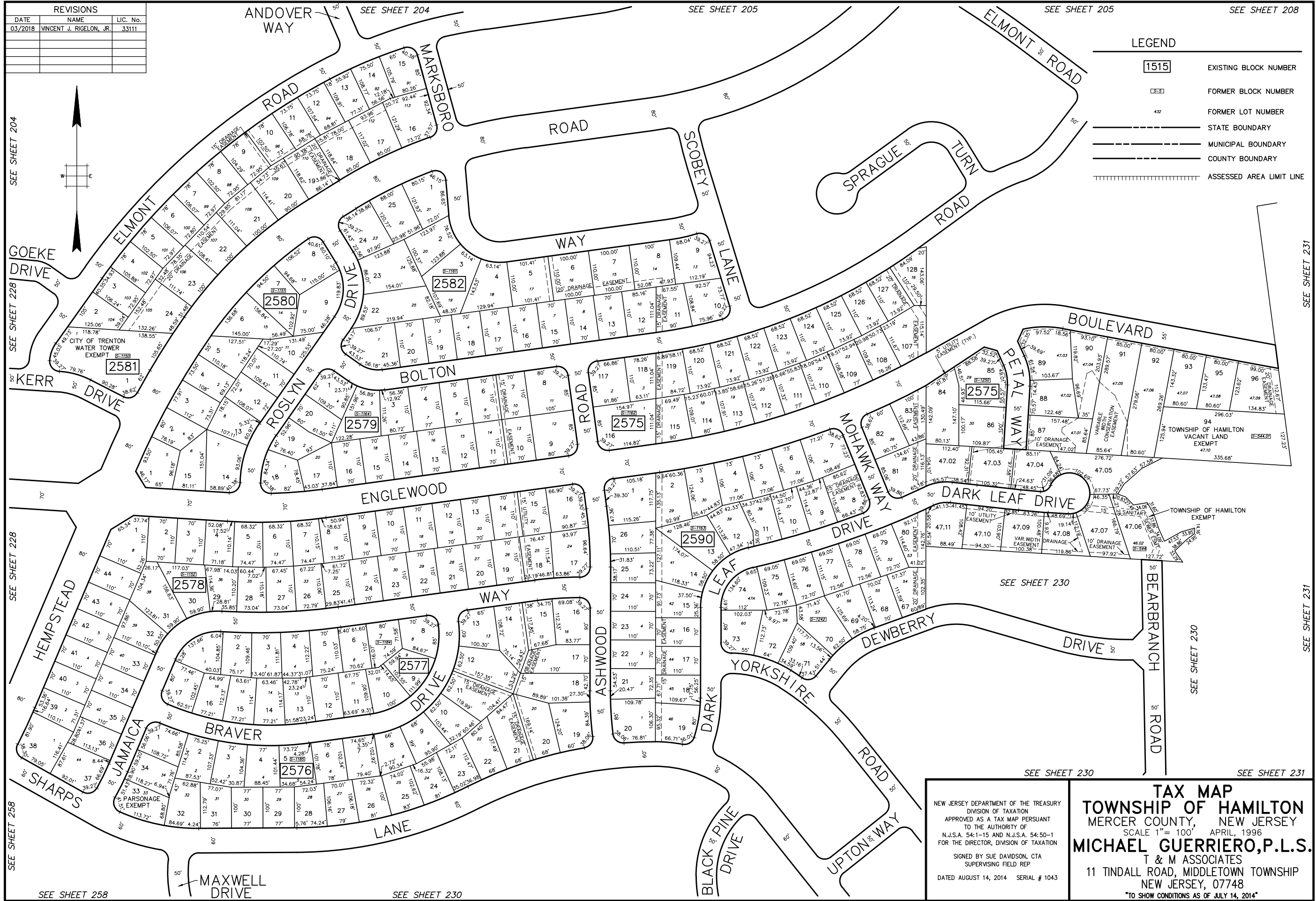
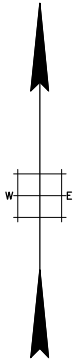


REVISIONS		
DATE	NAME	LIC. No.
03/2018	VINCENT J. RIGELON, JR.	33111



LEGEND

<span style="border: 1px solid black; padding: 2px;">1515</span>	EXISTING BLOCK NUMBER
<span style="border: 1px dashed black; padding: 2px;">3-3</span>	FORMER BLOCK NUMBER
432	FORMER LOT NUMBER
—	STATE BOUNDARY
—	MUNICIPAL BOUNDARY
—	COUNTY BOUNDARY
	ASSESSED AREA LIMIT LINE

SEE SHEET 204  
SEE SHEET 205  
SEE SHEET 208  
SEE SHEET 209  
SEE SHEET 210  
SEE SHEET 211  
SEE SHEET 212  
SEE SHEET 213  
SEE SHEET 214  
SEE SHEET 215  
SEE SHEET 216  
SEE SHEET 217  
SEE SHEET 218  
SEE SHEET 219  
SEE SHEET 220  
SEE SHEET 221  
SEE SHEET 222  
SEE SHEET 223  
SEE SHEET 224  
SEE SHEET 225  
SEE SHEET 226  
SEE SHEET 227  
SEE SHEET 228  
SEE SHEET 229  
SEE SHEET 230  
SEE SHEET 231  
SEE SHEET 232  
SEE SHEET 233  
SEE SHEET 234  
SEE SHEET 235  
SEE SHEET 236  
SEE SHEET 237  
SEE SHEET 238  
SEE SHEET 239  
SEE SHEET 240  
SEE SHEET 241  
SEE SHEET 242  
SEE SHEET 243  
SEE SHEET 244  
SEE SHEET 245  
SEE SHEET 246  
SEE SHEET 247  
SEE SHEET 248  
SEE SHEET 249  
SEE SHEET 250  
SEE SHEET 251  
SEE SHEET 252  
SEE SHEET 253  
SEE SHEET 254  
SEE SHEET 255  
SEE SHEET 256  
SEE SHEET 257  
SEE SHEET 258  
SEE SHEET 259

NEW JERSEY DEPARTMENT OF THE TREASURY  
DIVISION OF TAXATION  
APPROVED AS A TAX MAP PURSUANT  
TO THE AUTHORITY OF  
N.J.S.A. 54-1-15 AND N.J.S.A. 54-50-1  
FOR THE DIRECTOR, DIVISION OF TAXATION  
SIGNED BY SUE DAVIDSON, CTA  
SUPERVISING FIELD REP  
DATED AUGUST 14, 2014 SERIAL # 1043

**TAX MAP**  
**TOWNSHIP OF HAMILTON**  
MERCER COUNTY, NEW JERSEY  
SCALE 1" = 100' APRIL, 1996  
**MICHAEL GUERRIERO, P.L.S.**  
T & M ASSOCIATES  
11 TINDALL ROAD, MIDDLETOWN TOWNSHIP  
NEW JERSEY, 07748  
\*TO SHOW CONDITIONS AS OF JULY 14, 2014\*