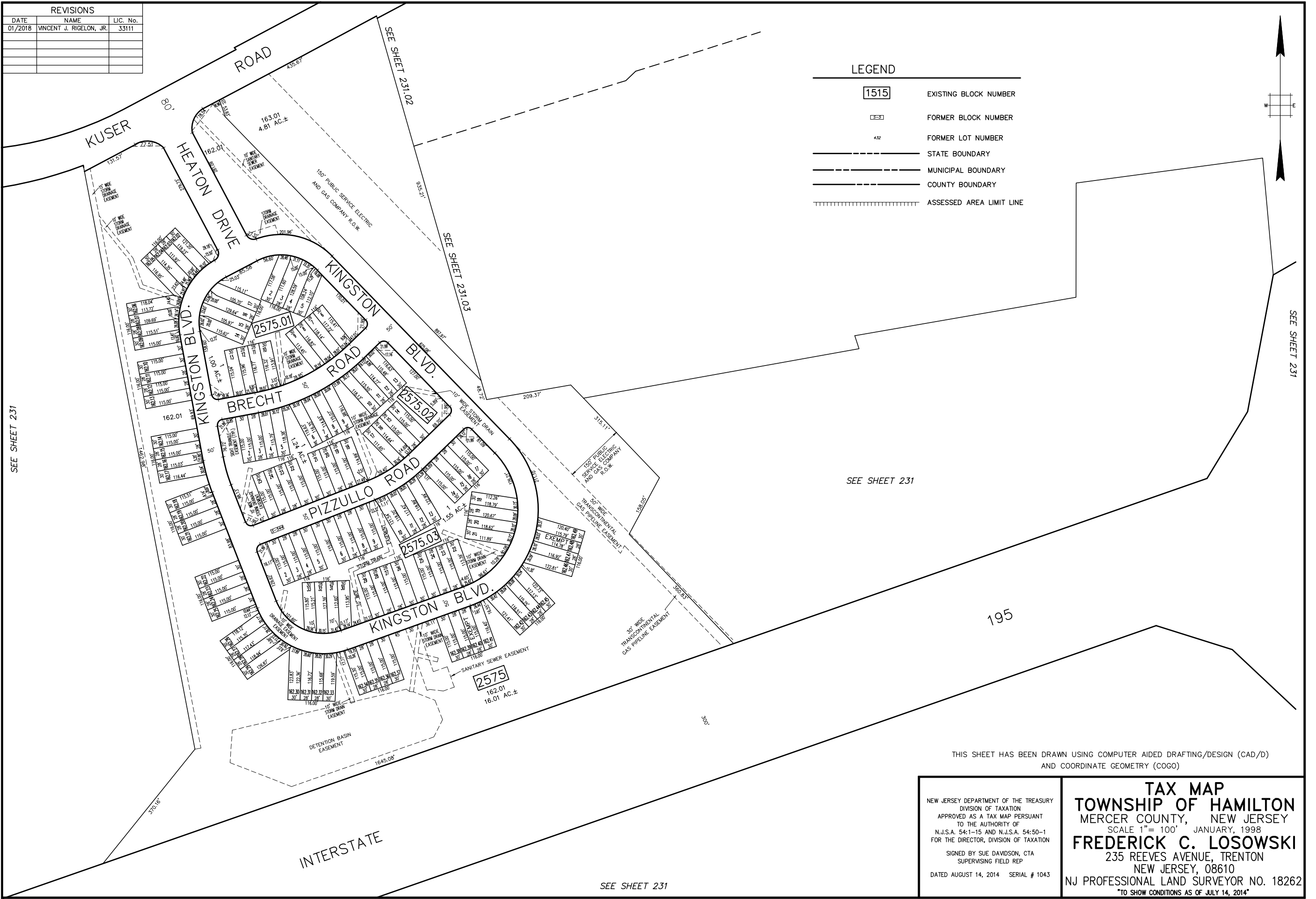
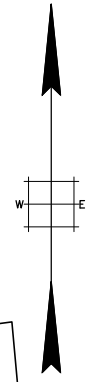


REVISIONS		
DATE	NAME	LIC. No.
01/2018	VINCENT J. RIGELON, JR.	33111



LEGEND

- 1515 EXISTING BLOCK NUMBER
- 3-3 FORMER BLOCK NUMBER
- 432 FORMER LOT NUMBER
- STATE BOUNDARY
- MUNICIPAL BOUNDARY
- COUNTY BOUNDARY
- ===== ASSESSED AREA LIMIT LINE



SEE SHEET 231

SEE SHEET 231.02

SEE SHEET 231.03

SEE SHEET 231

SEE SHEET 231

195

SEE SHEET 231

THIS SHEET HAS BEEN DRAWN USING COMPUTER AIDED DRAFTING/DESIGN (CAD/D) AND COORDINATE GEOMETRY (COGO)

NEW JERSEY DEPARTMENT OF THE TREASURY
 DIVISION OF TAXATION
 APPROVED AS A TAX MAP PURSUANT
 TO THE AUTHORITY OF
 N.J.S.A. 54:1-15 AND N.J.S.A. 54:50-1
 FOR THE DIRECTOR, DIVISION OF TAXATION
 SIGNED BY SUE DAVIDSON, CTA
 SUPERVISING FIELD REP
 DATED AUGUST 14, 2014 SERIAL # 1043

TAX MAP
TOWNSHIP OF HAMILTON
 MERCER COUNTY, NEW JERSEY
 SCALE 1"= 100' JANUARY, 1998
FREDERICK C. LOSOWSKI
 235 REEVES AVENUE, TRENTON
 NEW JERSEY, 08610
 NJ PROFESSIONAL LAND SURVEYOR NO. 18262
 TO SHOW CONDITIONS AS OF JULY 14, 2014