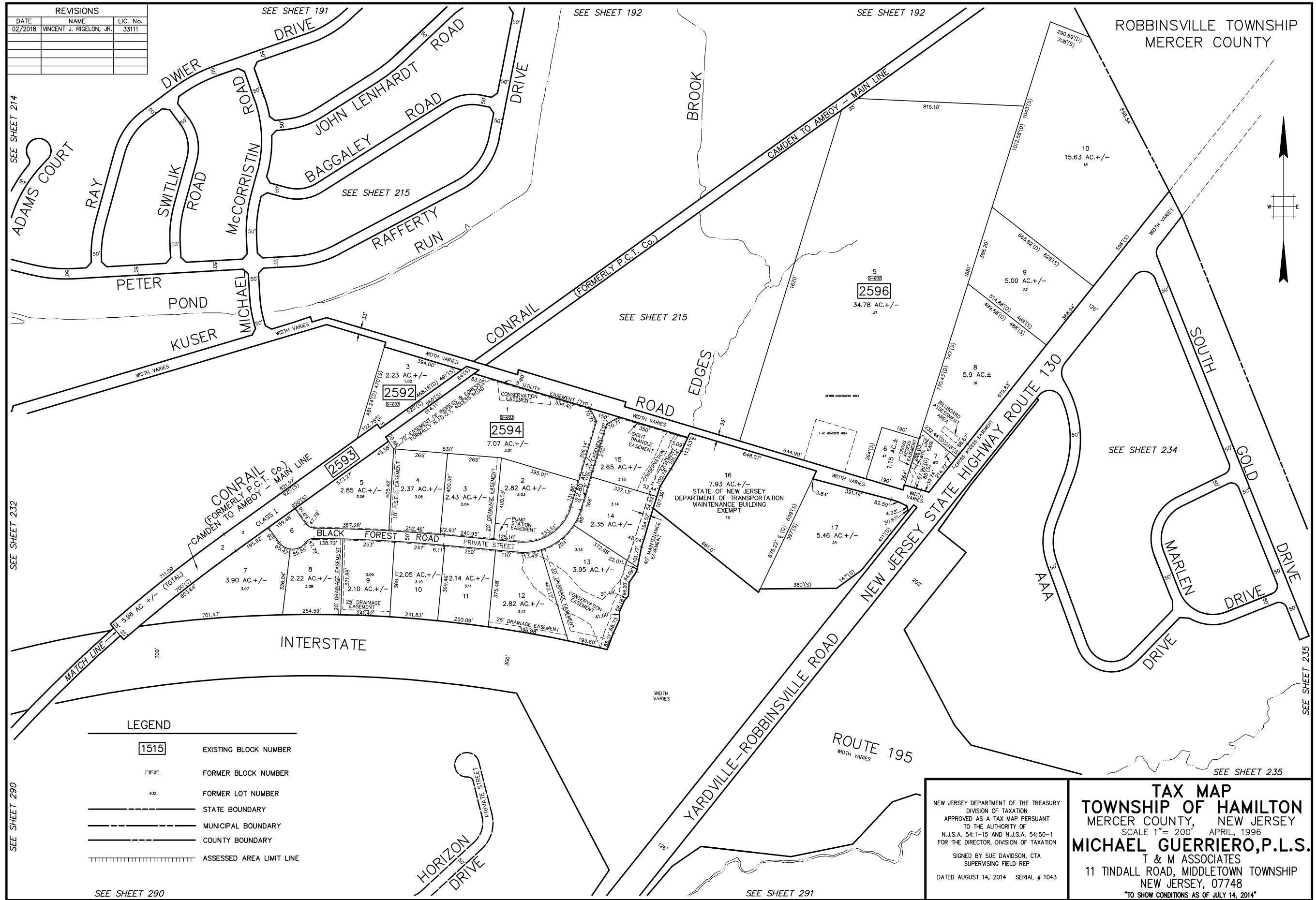


REVISIONS		
DATE	NAME	LIC. No.
02/2018	VINCENT J. RIGELON, JR.	33111



SEE SHEET 214  
SEE SHEET 215  
SEE SHEET 216  
SEE SHEET 217  
SEE SHEET 218  
SEE SHEET 219  
SEE SHEET 220  
SEE SHEET 221  
SEE SHEET 222  
SEE SHEET 223  
SEE SHEET 224  
SEE SHEET 225  
SEE SHEET 226  
SEE SHEET 227  
SEE SHEET 228  
SEE SHEET 229  
SEE SHEET 230  
SEE SHEET 231  
SEE SHEET 232  
SEE SHEET 233  
SEE SHEET 234  
SEE SHEET 235

**LEGEND**

<span style="border: 1px solid black; padding: 2px;">1515</span>	EXISTING BLOCK NUMBER
<span style="border: 1px dashed black; padding: 2px;">353</span>	FORMER BLOCK NUMBER
432	FORMER LOT NUMBER
---	STATE BOUNDARY
---	MUNICIPAL BOUNDARY
---	COUNTY BOUNDARY
	ASSESSED AREA LIMIT LINE

NEW JERSEY DEPARTMENT OF THE TREASURY  
DIVISION OF TAXATION  
APPROVED AS A TAX MAP PURSUANT  
TO THE AUTHORITY OF  
N.J.S.A. 54:1-15 AND N.J.S.A. 54:50-1  
FOR THE DIRECTOR, DIVISION OF TAXATION  
SIGNED BY SUE DAVIDSON, CTA  
SUPERVISING FIELD REP  
DATED AUGUST 14, 2014 SERIAL # 1043

**TAX MAP**  
**TOWNSHIP OF HAMILTON**  
MERCER COUNTY, NEW JERSEY  
SCALE 1" = 200' APRIL, 1996  
**MICHAEL GUERRIERO, P.L.S.**  
T & M ASSOCIATES  
11 TINDALL ROAD, MIDDLETOWN TOWNSHIP  
NEW JERSEY, 07748  
\*TO SHOW CONDITIONS AS OF JULY 14, 2014\*

BASE INFO - DCA Relation: 0'00"00" Base Point: 0.0  
PLOTTED: 04/18/96