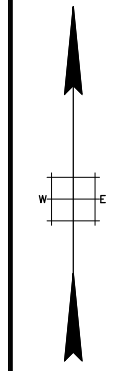
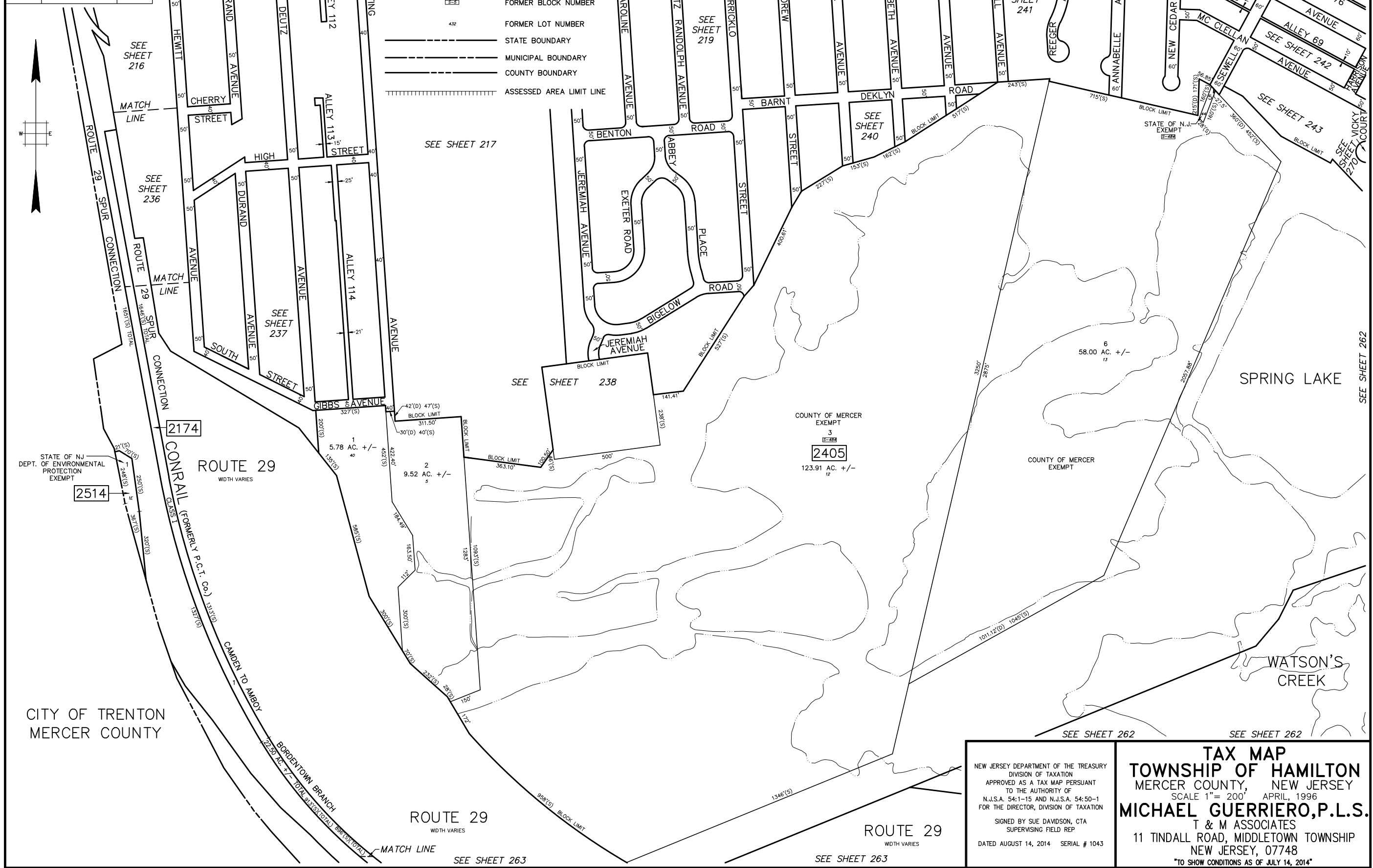


REVISIONS		
DATE	NAME	LIC. No.



LEGEND

- 1515 EXISTING BLOCK NUMBER
- 3-3 FORMER BLOCK NUMBER
- 42 FORMER LOT NUMBER
- STATE BOUNDARY
- MUNICIPAL BOUNDARY
- COUNTY BOUNDARY
- ASSESSED AREA LIMIT LINE

STATE OF NJ
DEPT. OF ENVIRONMENTAL
PROTECTION
EXEMPT

2514

2174

ROUTE 29
WIDTH VARIES

1
5.78 AC. +/-

2
9.52 AC. +/-

COUNTY OF MERCER
EXEMPT
3
2405
123.91 AC. +/-

6
58.00 AC. +/-

SPRING LAKE

WATSON'S
CREEK

CITY OF TRENTON
MERCER COUNTY

ROUTE 29
WIDTH VARIES

ROUTE 29
WIDTH VARIES

NEW JERSEY DEPARTMENT OF THE TREASURY
DIVISION OF TAXATION
APPROVED AS A TAX MAP PURSUANT
TO THE AUTHORITY OF
N.J.S.A. 54:1-15 AND N.J.S.A. 54:50-1
FOR THE DIRECTOR, DIVISION OF TAXATION
SIGNED BY SUE DAVIDSON, CTA
SUPERVISING FIELD REP
DATED AUGUST 14, 2014 SERIAL # 1043

TAX MAP
TOWNSHIP OF HAMILTON
MERCER COUNTY, NEW JERSEY
SCALE 1" = 200' APRIL, 1996
MICHAEL GUERRIERO, P.L.S.
T & M ASSOCIATES
11 TINDALL ROAD, MIDDLETOWN TOWNSHIP
NEW JERSEY, 07748
TO SHOW CONDITIONS AS OF JULY 14, 2014