

PLOTTED: 03/28/96

Base Point: 0.0

DCA Relation: 0'00"00"

SEE SHEET 242

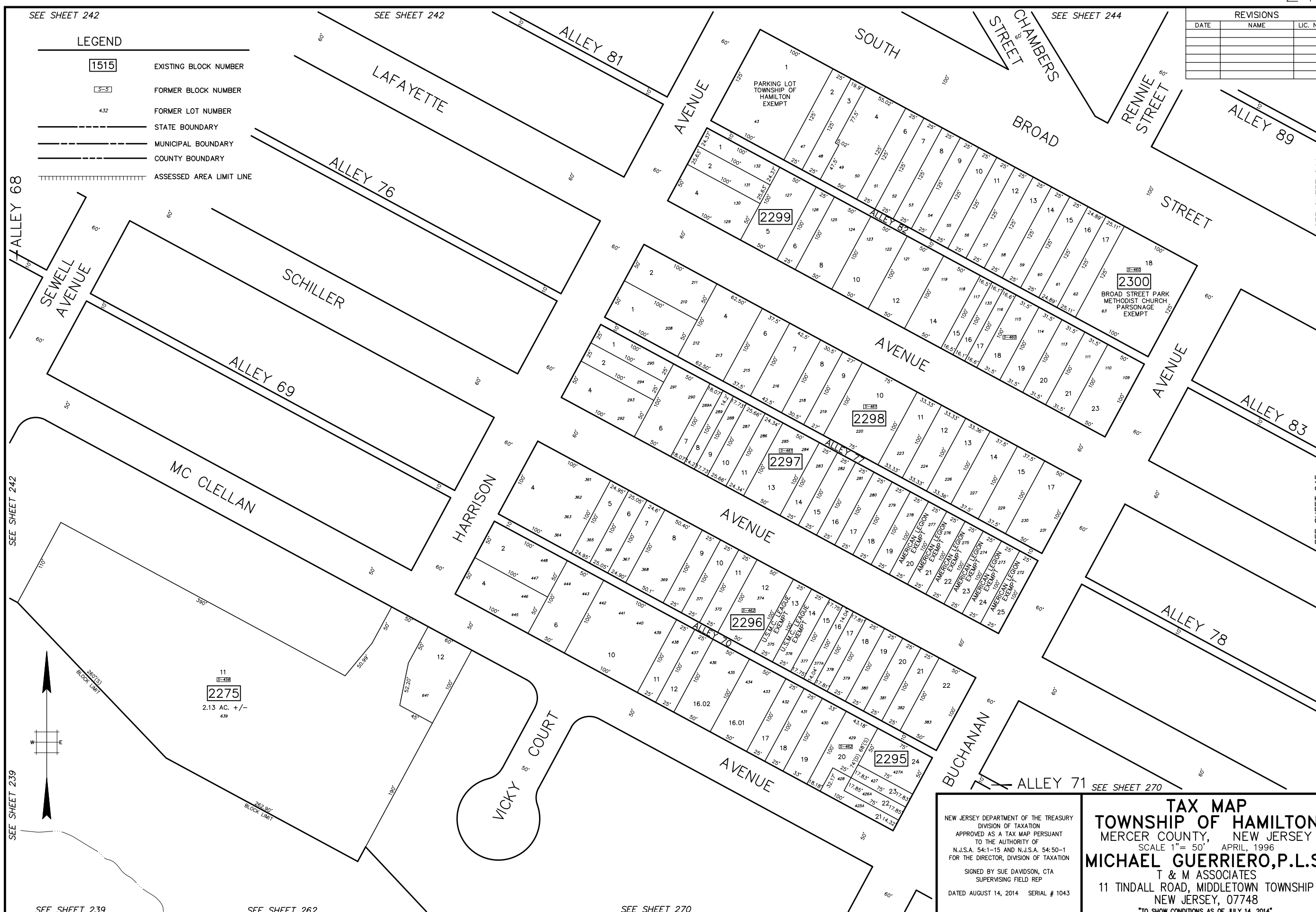
SEE SHEET 242

SEE SHEET 244

LEGEND

- 1515 EXISTING BLOCK NUMBER
- 3-5 FORMER BLOCK NUMBER
- 432 FORMER LOT NUMBER
- STATE BOUNDARY
- MUNICIPAL BOUNDARY
- COUNTY BOUNDARY
- ASSESSED AREA LIMIT LINE

REVISIONS		
DATE	NAME	LIC. No.



SEE SHEET 242

SEE SHEET 244

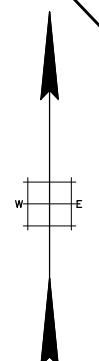
SEE SHEET 245

SEE SHEET 239

SEE SHEET 239

SEE SHEET 262

SEE SHEET 270



11  
2275  
 2.13 AC. +/-  
 639

NEW JERSEY DEPARTMENT OF THE TREASURY  
 DIVISION OF TAXATION  
 APPROVED AS A TAX MAP PURSUANT  
 TO THE AUTHORITY OF  
 N.J.S.A. 54:1-15 AND N.J.S.A. 54:50-1  
 FOR THE DIRECTOR, DIVISION OF TAXATION  
 SIGNED BY SUE DAVIDSON, CTA  
 SUPERVISING FIELD REP  
 DATED AUGUST 14, 2014 SERIAL # 1043

**TAX MAP**  
**TOWNSHIP OF HAMILTON**  
 MERCER COUNTY, NEW JERSEY  
 SCALE 1" = 50' APRIL, 1996  
**MICHAEL GUERRIERO, P.L.S.**  
 T & M ASSOCIATES  
 11 TINDALL ROAD, MIDDLETOWN TOWNSHIP  
 NEW JERSEY, 07748  
 \*TO SHOW CONDITIONS AS OF JULY 14, 2014\*