

PLOTTED: 03/28/96

BASE INFO - DCA Rotation: 0°00'00" Base Point: 0.0

REVISIONS		
DATE	NAME	LIC. No.
02/2017	WINCENT J. RIGELON, JR.	33111

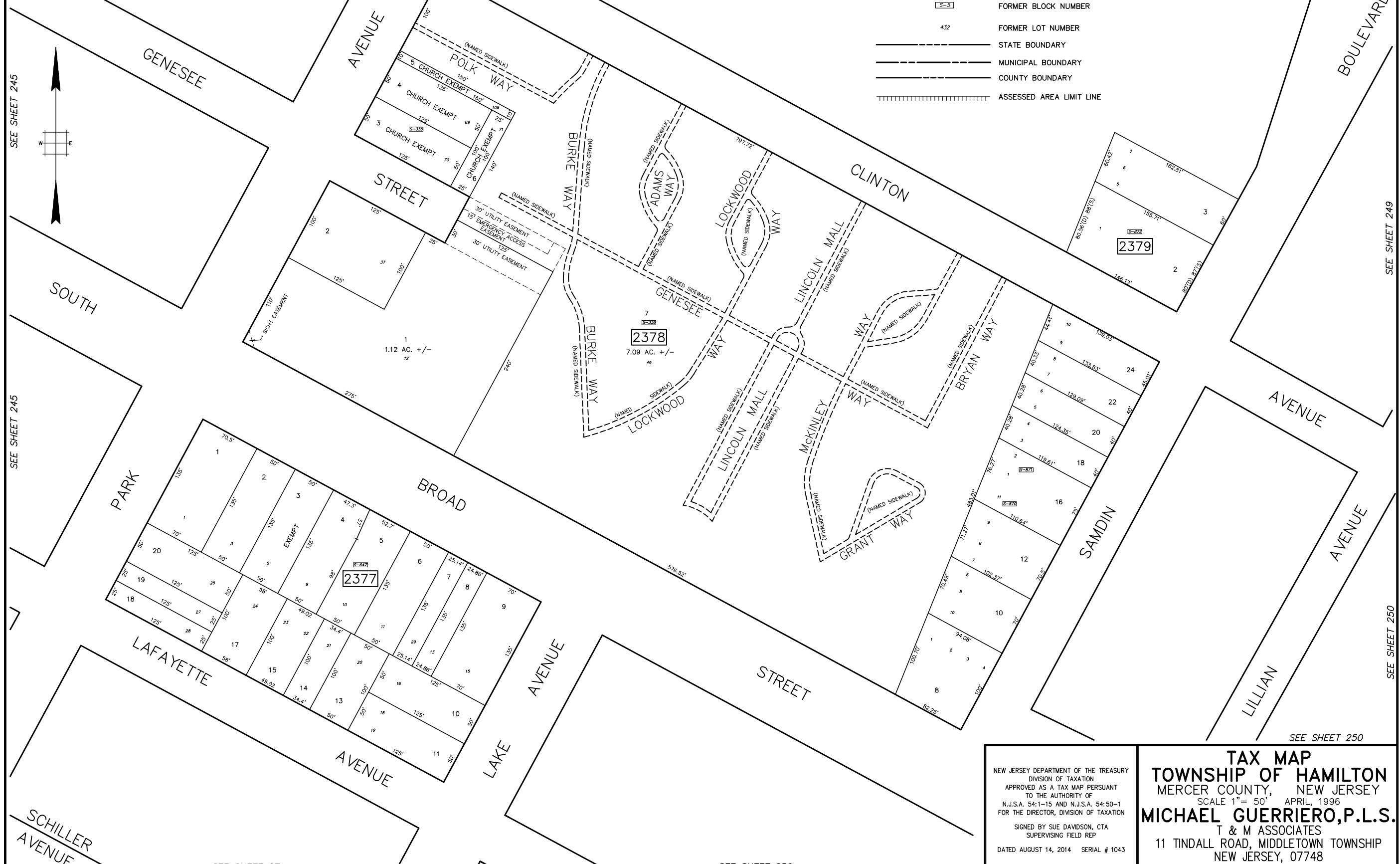
SEE SHEET 245

SEE SHEET 247

SEE SHEET 247

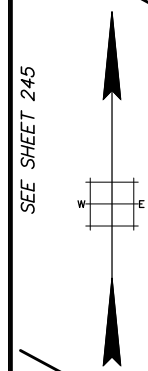
RUTH AVENUE

BOULEVARD



LEGEND

- 1515 EXISTING BLOCK NUMBER
- S-5 FORMER BLOCK NUMBER
- 432 FORMER LOT NUMBER
- STATE BOUNDARY
- MUNICIPAL BOUNDARY
- COUNTY BOUNDARY
- ASSESSED AREA LIMIT LINE



SEE SHEET 245

SEE SHEET 245

SEE SHEET 271

SEE SHEET 250

SEE SHEET 249

SEE SHEET 250

SEE SHEET 250

NEW JERSEY DEPARTMENT OF THE TREASURY
 DIVISION OF TAXATION
 APPROVED AS A TAX MAP PERSUANT
 TO THE AUTHORITY OF
 N.J.S.A. 54:1-15 AND N.J.S.A. 54:50-1
 FOR THE DIRECTOR, DIVISION OF TAXATION

SIGNED BY SUE DAVIDSON, CTA
 SUPERVISING FIELD REP

DATED AUGUST 14, 2014 SERIAL # 1043

TAX MAP
TOWNSHIP OF HAMILTON
 MERCER COUNTY, NEW JERSEY
 SCALE 1" = 50' APRIL, 1996

MICHAEL GUERRIERO, P.L.S.
 T & M ASSOCIATES
 11 TINDALL ROAD, MIDDLETOWN TOWNSHIP
 NEW JERSEY, 07748
 TO SHOW CONDITIONS AS OF JULY 14, 2014