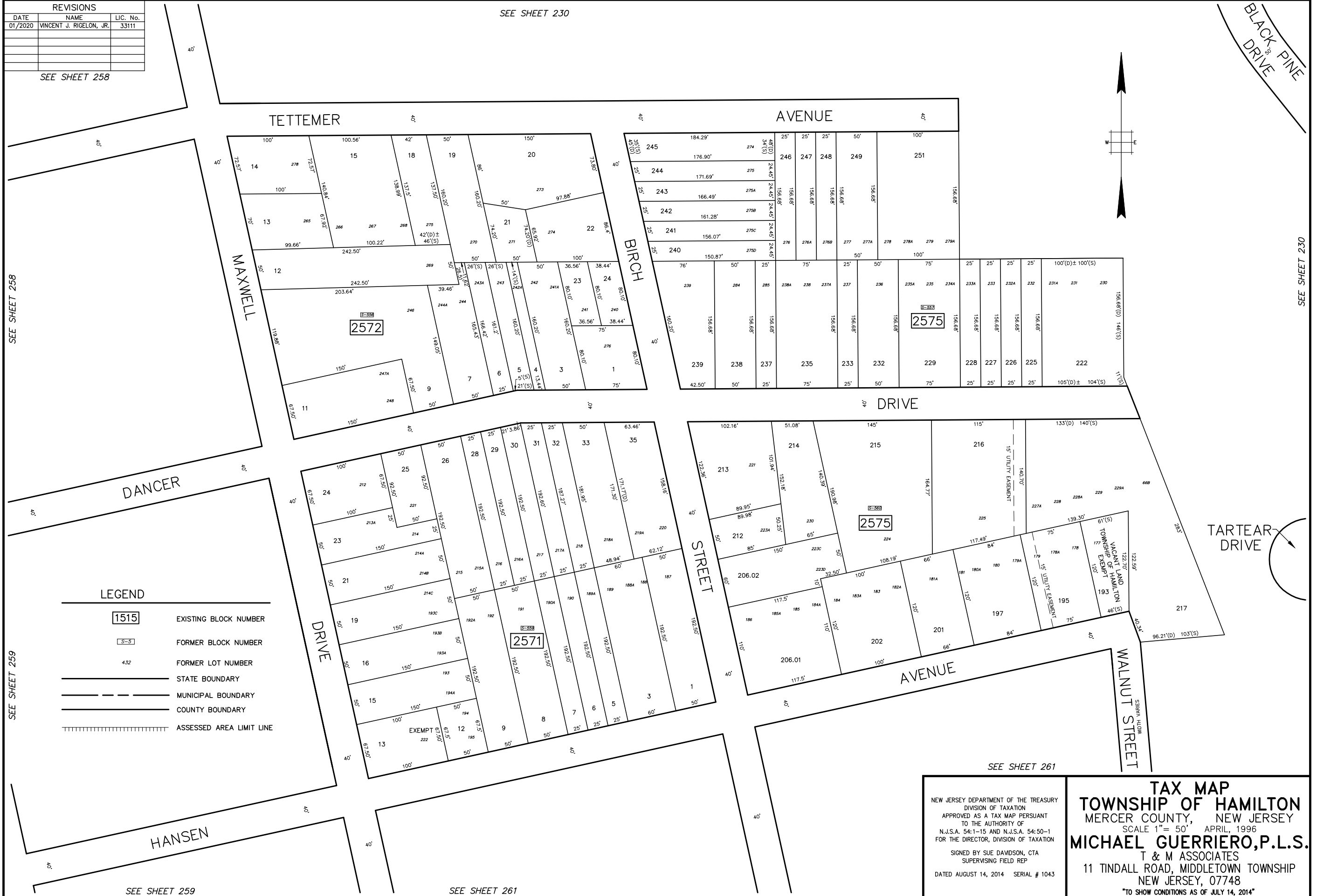
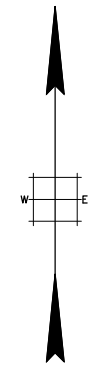


REVISIONS		
DATE	NAME	LIC. No.
01/2020	VINCENT J. RIGELON, JR.	33111

SEE SHEET 258

SEE SHEET 230

BLACK PINE DRIVE



SEE SHEET 258

SEE SHEET 230

SEE SHEET 259

SEE SHEET 261

LEGEND

1515	EXISTING BLOCK NUMBER
S-S	FORMER BLOCK NUMBER
4.32	FORMER LOT NUMBER
—	STATE BOUNDARY
- - -	MUNICIPAL BOUNDARY
—	COUNTY BOUNDARY
	ASSESSED AREA LIMIT LINE

SEE SHEET 259

SEE SHEET 261

NEW JERSEY DEPARTMENT OF THE TREASURY
 DIVISION OF TAXATION
 APPROVED AS A TAX MAP PURSUANT
 TO THE AUTHORITY OF
 N.J.S.A. 54:1-15 AND N.J.S.A. 54:50-1
 FOR THE DIRECTOR, DIVISION OF TAXATION
 SIGNED BY SUE DAVDSON, CTA
 SUPERVISING FIELD REP
 DATED AUGUST 14, 2014 SERIAL # 1043

TAX MAP
TOWNSHIP OF HAMILTON
 MERCER COUNTY, NEW JERSEY
 SCALE 1" = 50' APRIL, 1996
MICHAEL GUERRIERO, P.L.S.
 T & M ASSOCIATES
 11 TINDALL ROAD, MIDDLETOWN TOWNSHIP
 NEW JERSEY, 07748
 TO SHOW CONDITIONS AS OF JULY 14, 2014