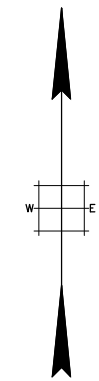


REVISIONS		
DATE	NAME	LIC. No.
08/2017	VINCENT J. RIGELON, JR.	33111

SEE SHEET 272

SEE SHEET 272

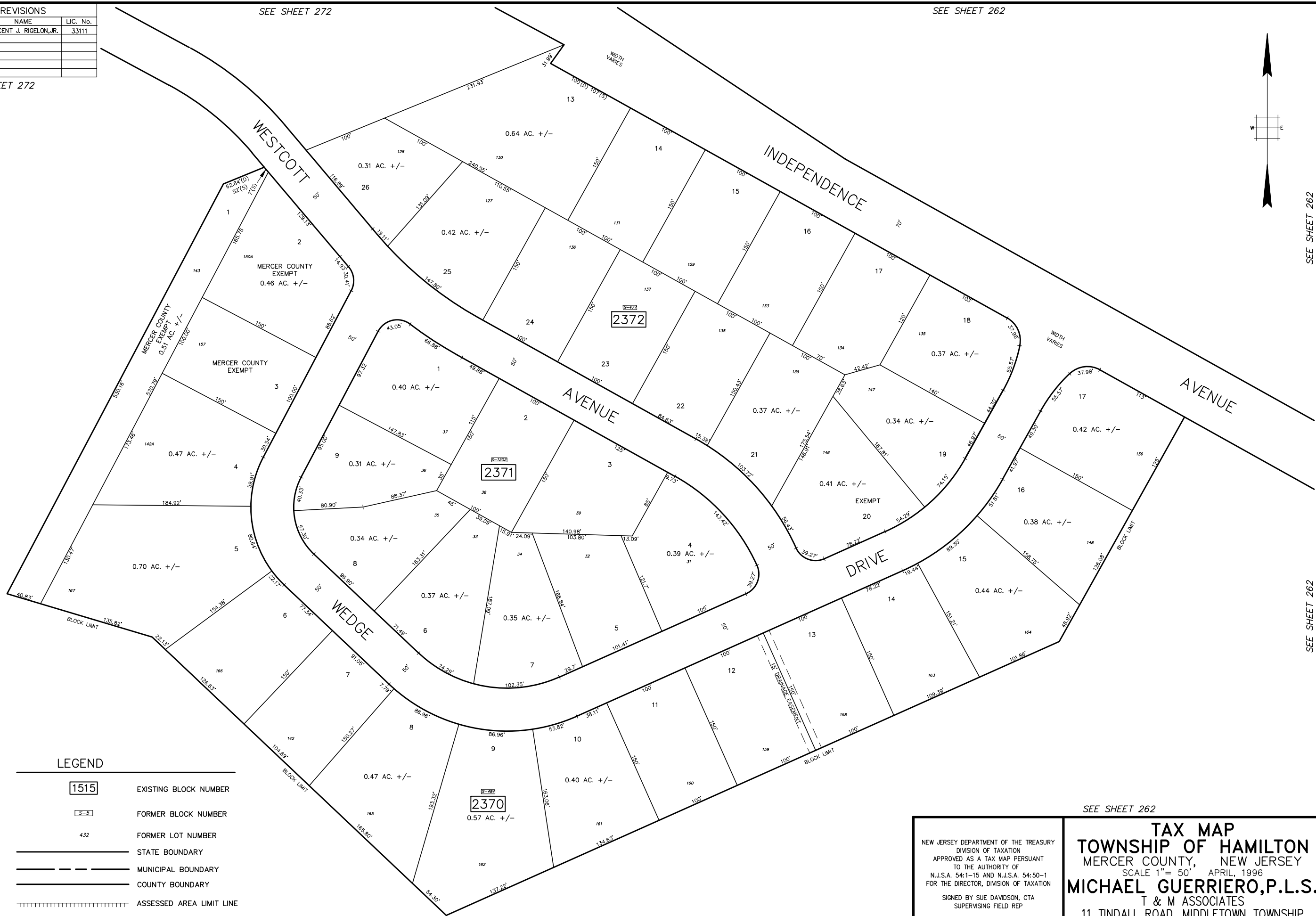
SEE SHEET 262



SEE SHEET 262

SEE SHEET 262

SEE SHEET 262



**LEGEND**

<span style="border: 1px solid black; padding: 2px;">1515</span>	EXISTING BLOCK NUMBER
<span style="border: 1px dashed black; padding: 2px;">15-5</span>	FORMER BLOCK NUMBER
432	FORMER LOT NUMBER
	STATE BOUNDARY
	MUNICIPAL BOUNDARY
	COUNTY BOUNDARY
	ASSESSED AREA LIMIT LINE

SEE SHEET 262

NEW JERSEY DEPARTMENT OF THE TREASURY  
 DIVISION OF TAXATION  
 APPROVED AS A TAX MAP PURSUANT  
 TO THE AUTHORITY OF  
 N.J.S.A. 54:1-15 AND N.J.S.A. 54:50-1  
 FOR THE DIRECTOR, DIVISION OF TAXATION  
 SIGNED BY SUE DAVIDSON, CTA  
 SUPERVISING FIELD REP  
 DATED AUGUST 14, 2014 SERIAL # 1043

**TAX MAP**  
**TOWNSHIP OF HAMILTON**  
 MERCER COUNTY, NEW JERSEY  
 SCALE 1"= 50' APRIL, 1996  
**MICHAEL GUERRIERO, P.L.S.**  
 T & M ASSOCIATES  
 11 TINDALL ROAD, MIDDLETOWN TOWNSHIP  
 NEW JERSEY, 07748  
 \*TO SHOW CONDITIONS AS OF JULY 14, 2014\*

SEE SHEET 262

PLOTTED: 04/01/196 Base Point: 0,0 DCA Relation: 0.00000