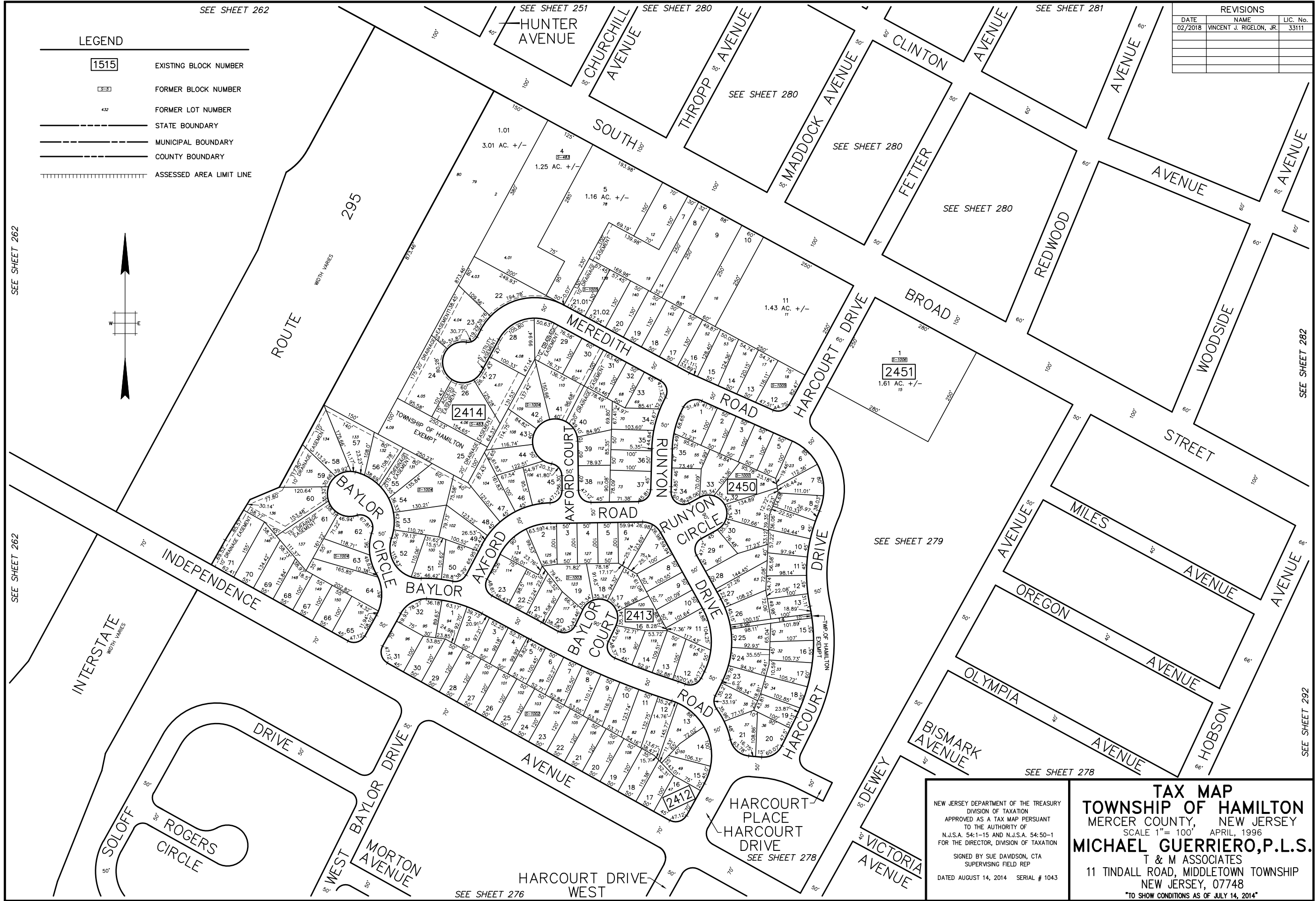
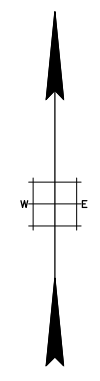


BASE INFO - DCA Rotation: 0°00'00" Base Point: 0,0
PLOTTED: 04/15/96



LEGEND

1515	EXISTING BLOCK NUMBER
55	FORMER BLOCK NUMBER
432	FORMER LOT NUMBER
---	STATE BOUNDARY
---	MUNICIPAL BOUNDARY
---	COUNTY BOUNDARY
---	ASSESSED AREA LIMIT LINE



REVISIONS

DATE	NAME	LIC. No.
02/2018	VINCENT J. RIGELON, JR.	33111

SEE SHEET 262

SEE SHEET 262

SEE SHEET 276

SEE SHEET 251

SEE SHEET 280

SEE SHEET 281

SEE SHEET 280

SEE SHEET 280

SEE SHEET 280

SEE SHEET 279

SEE SHEET 278

SEE SHEET 282

SEE SHEET 292

NEW JERSEY DEPARTMENT OF THE TREASURY
 DIVISION OF TAXATION
 APPROVED AS A TAX MAP PURSUANT
 TO THE AUTHORITY OF
 N.J.S.A. 54:1-15 AND N.J.S.A. 54:50-1
 FOR THE DIRECTOR, DIVISION OF TAXATION
 SIGNED BY SUE DAVIDSON, CTA
 SUPERVISING FIELD REP
 DATED AUGUST 14, 2014 SERIAL # 1043

TAX MAP
TOWNSHIP OF HAMILTON
 MERCER COUNTY, NEW JERSEY
 SCALE 1"= 100' APRIL, 1996
MICHAEL GUERRIERO, P.L.S.
 T & M ASSOCIATES
 11 TINDALL ROAD, MIDDLETOWN TOWNSHIP
 NEW JERSEY, 07748
 TO SHOW CONDITIONS AS OF JULY 14, 2014