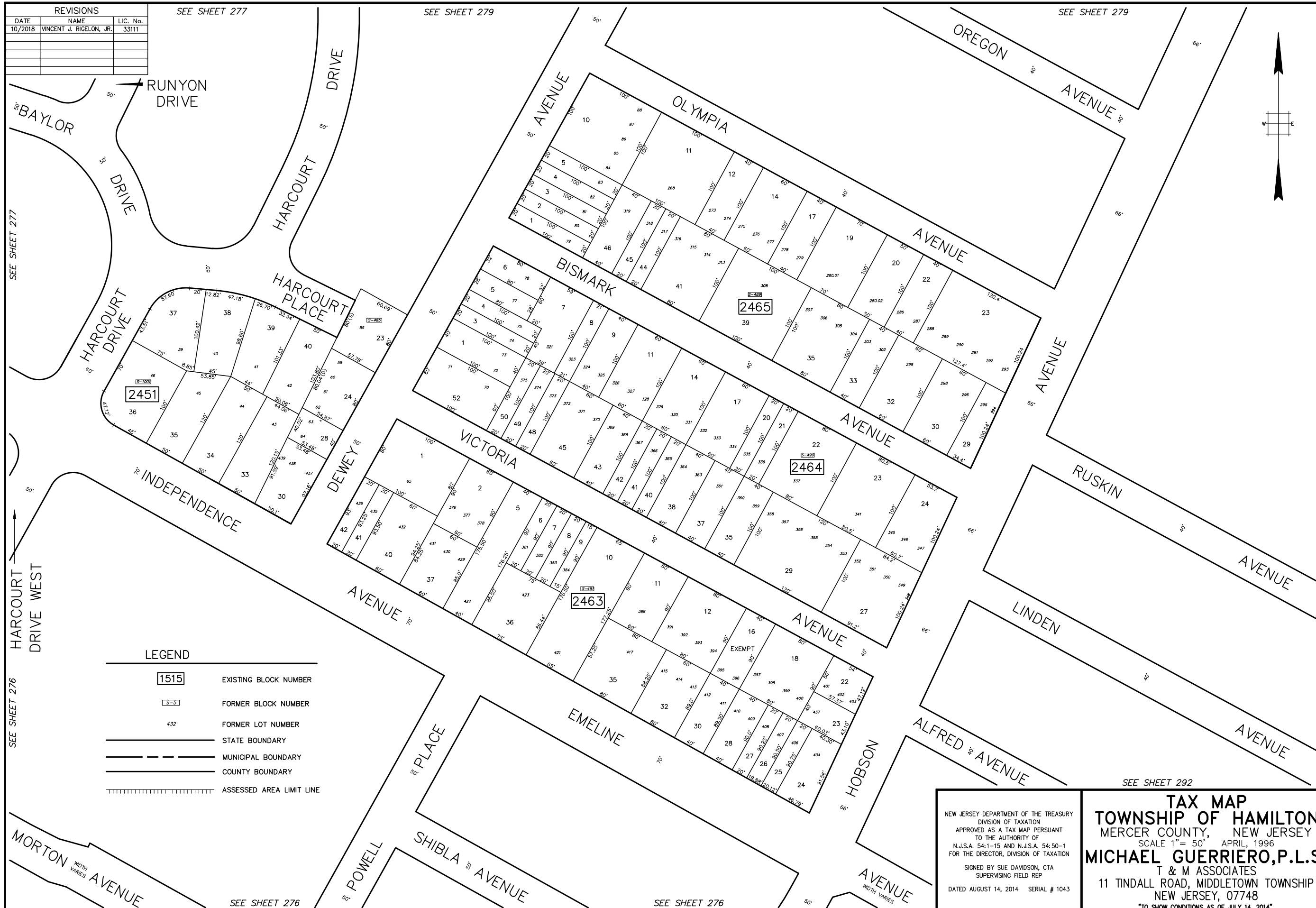
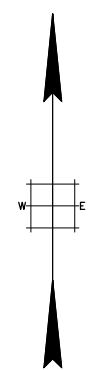


REVISIONS		
DATE	NAME	LIC. No.
10/2018	WINCENT J. RIGELON, JR.	33111

SEE SHEET 277

SEE SHEET 279

SEE SHEET 279



SEE SHEET 277

SEE SHEET 276

SEE SHEET 276

SEE SHEET 276

SEE SHEET 292

SEE SHEET 292

LEGEND

1515	EXISTING BLOCK NUMBER
S-5	FORMER BLOCK NUMBER
4.32	FORMER LOT NUMBER
	STATE BOUNDARY
	MUNICIPAL BOUNDARY
	COUNTY BOUNDARY
	ASSESSED AREA LIMIT LINE

NEW JERSEY DEPARTMENT OF THE TREASURY
 DIVISION OF TAXATION
 APPROVED AS A TAX MAP PURSUANT
 TO THE AUTHORITY OF
 N.J.S.A. 54:1-15 AND N.J.S.A. 54:50-1
 FOR THE DIRECTOR, DIVISION OF TAXATION

SIGNED BY SUE DAVIDSON, CTA
 SUPERVISING FIELD REP

DATED AUGUST 14, 2014 SERIAL # 1043

TAX MAP
TOWNSHIP OF HAMILTON
 MERCER COUNTY, NEW JERSEY
 SCALE 1" = 50' APRIL, 1996
MICHAEL GUERRIERO, P.L.S.
 T & M ASSOCIATES
 11 TINDALL ROAD, MIDDLETOWN TOWNSHIP
 NEW JERSEY, 07748
 TO SHOW CONDITIONS AS OF JULY 14, 2014