

| REVISIONS |                        |          |
|-----------|------------------------|----------|
| DATE      | NAME                   | LIC. No. |
| 10/2021   | VINCENT J. RIGELON JR. | 33111    |
|           |                        |          |
|           |                        |          |

SEE SHEET 281

SEE SHEET 254

SEE SHEET 256

SEE SHEET 281

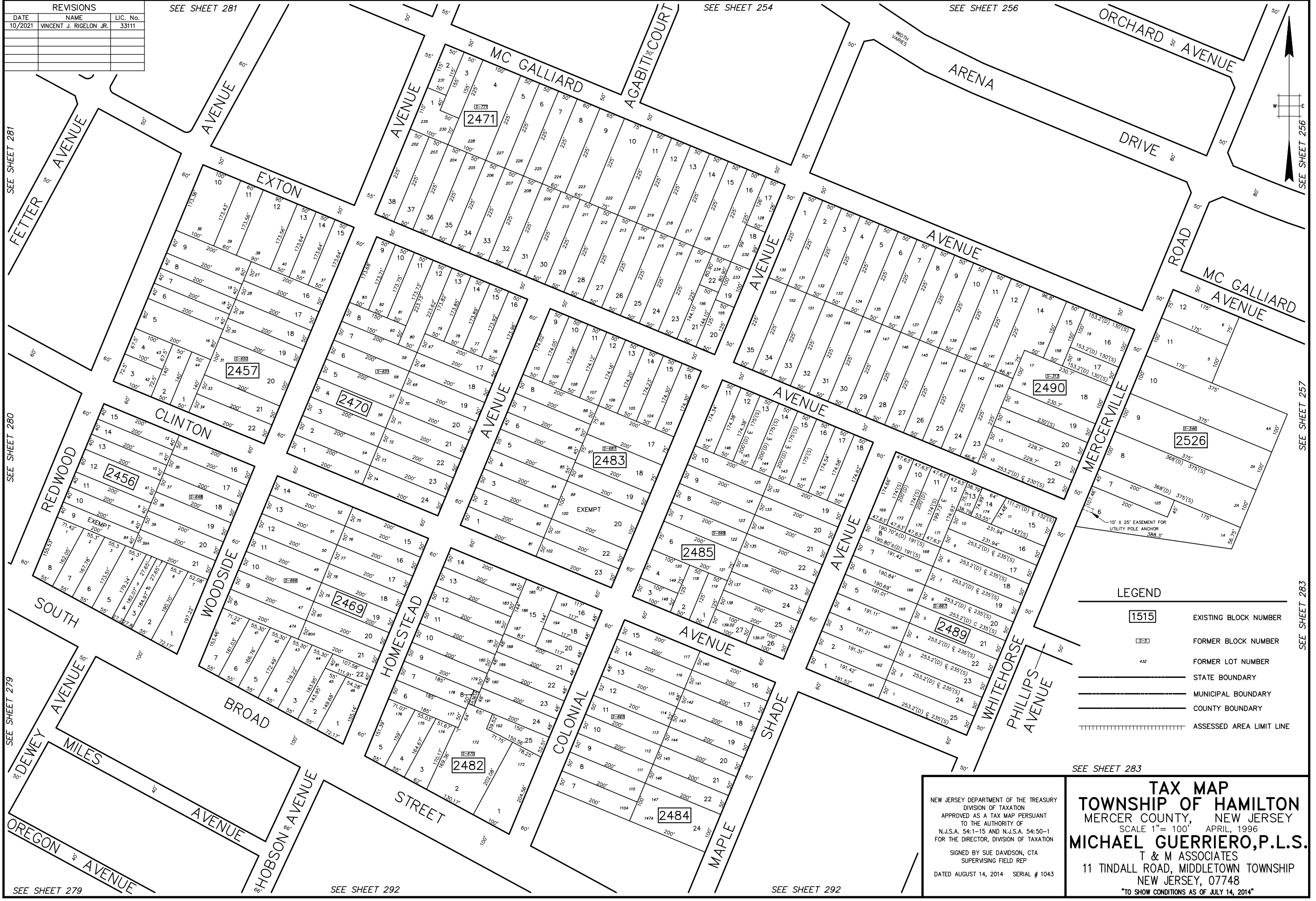
SEE SHEET 256

SEE SHEET 280

SEE SHEET 257

SEE SHEET 279

SEE SHEET 283



**LEGEND**

|  |                          |
|--|--------------------------|
| <span style="border: 1px solid black; padding: 2px;">1515</span> | EXISTING BLOCK NUMBER    |
| <span style="border: 1px dashed black; padding: 2px;">533</span> | FORMER BLOCK NUMBER      |
| 432  | FORMER LOT NUMBER        |
| —  | STATE BOUNDARY           |
| —  | MUNICIPAL BOUNDARY       |
| —  | COUNTY BOUNDARY          |
|  | ASSESSED AREA LIMIT LINE |

NEW JERSEY DEPARTMENT OF THE TREASURY  
 DIVISION OF TAXATION  
 APPROVED AS A TAX MAP PURSUANT  
 TO THE AUTHORITY OF  
 N.J.S.A. 54:1-15 AND N.J.S.A. 54:50-1  
 FOR THE DIRECTOR, DIVISION OF TAXATION

SIGNED BY SUE DAWSON, CTA  
 SUPERVISING FIELD REP

DATED AUGUST 14, 2014 SERIAL # 1043

---

**TAX MAP  
 TOWNSHIP OF HAMILTON  
 MERCER COUNTY, NEW JERSEY**  
 SCALE 1" = 100' APRIL, 1996  
**MICHAEL GUERRIERO, P.L.S.**  
 T & M ASSOCIATES  
 11 TINDALL ROAD, MIDDLETOWN TOWNSHIP  
 NEW JERSEY, 07748  
 \*TO SHOW CONDITIONS AS OF JULY 14, 2014\*